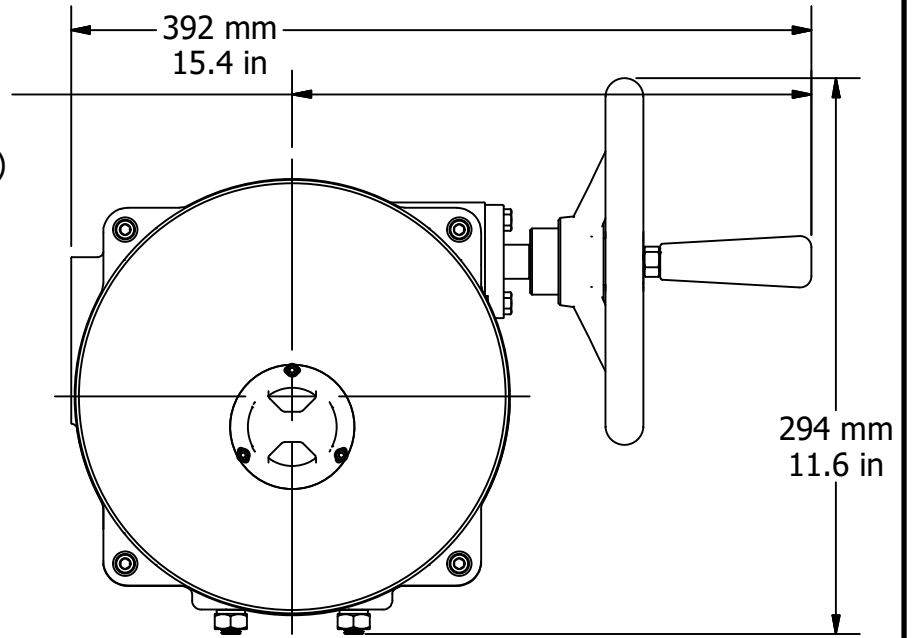


Engineering Change Notice

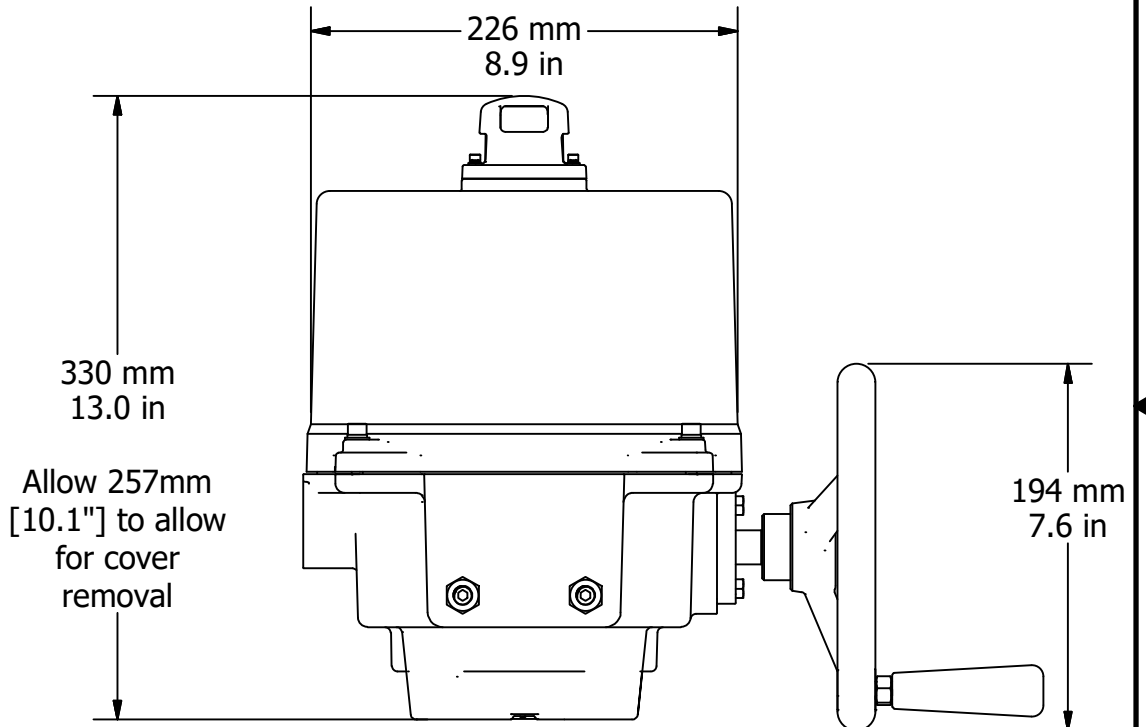
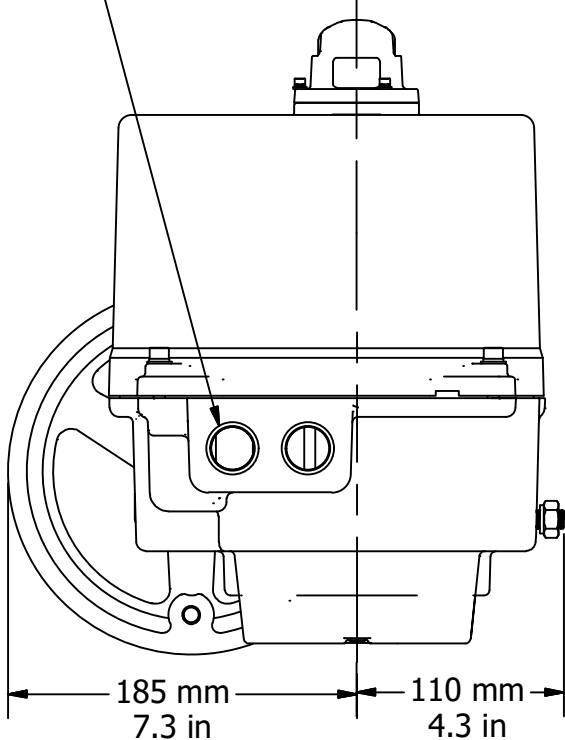
REV	Change Date	Description	Name
A	01.25.22	Edited from P4_6 8P F10 12 Dim Data to add 36mm drive	DJG
B			
C			
D			
E			
F			



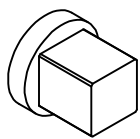
275 mm
10.8 in
Add 65mm (2.56in)
for Torque Switch



(2) 3/4" NPT
EMT Entry



Allow 257mm
[10.1"] to allow
for cover
removal



Drive Coupling Fabrication Data
8pt double square

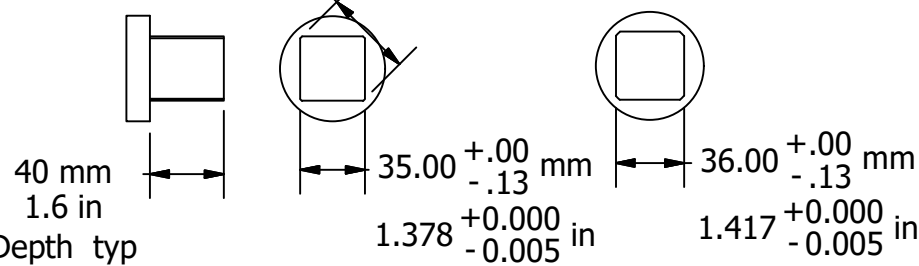
35mm **36mm**

Ø102.4 [4.03 in]
BHC
ISO 5211 F10
(4) M10x1.5
▽20mm 0.8"

Ø125.4 [4.94 in]
BHC
ISO 5211 F12
(4) M12x1.75
▽23mm 0.9"

See Coupling Inset
35 or 36mm

48 [1.9 in] typ



Drawn By DJG	Created: 4/29/2013	Part No.
Checked By DJG	Last Checked: 12/2/2020	This Document is the property of ProMation Engineering, Inc. Distribution of this document without the written consent of the owner is Strictly forbidden. Failure to comply will incur a liability for Damages.
Material	Finish	
Dimensional Tolerances (Unless Otherwise Noted): X ± 2.5mm [X.X ± .1] X.X ± .3mm [X.XX ± .01"] X.XX ± .13mm [X.XXX ± .005"] ALL TOLERANCE FEATURES IN mm		

Promation Engineering Inc. 16138 Flight Path Drive Brooksville, FL 34604		Phone: 352-544-8436 Fax: 352-544-8439
--	--	--

ProMation Engineering, Inc.		
Dwg. Name: P4_6 F10 F12 8P36 DimData.idw		
	P4~P6 F10 F12 36 8pt sq drive Dim Data	Rev. A
Dimensional Data for P4~P6 36mm Drive Actuators		
NO SCALE		Sheet Number: 1