

rev	change date	revision	name	10/24/2016 9:12 AM	WD-850-64101 rB.dwg
h	noming	material no	ind	Wiring Diagram	
g		dwn by: KHL	Date	6.17.2014	
f		scale	NONE		
e					
d					
c					
b	10/24/2016	Change to P2/3 add 10 conductor lead option	DWG		
d	06.17.2014	P2/0/3/0 Document, no wire colors	KHL		

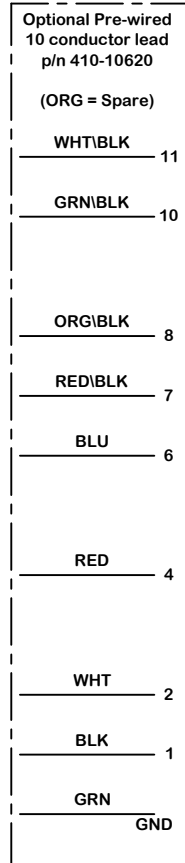
**ProMation**

**WD-850-64101 rB**

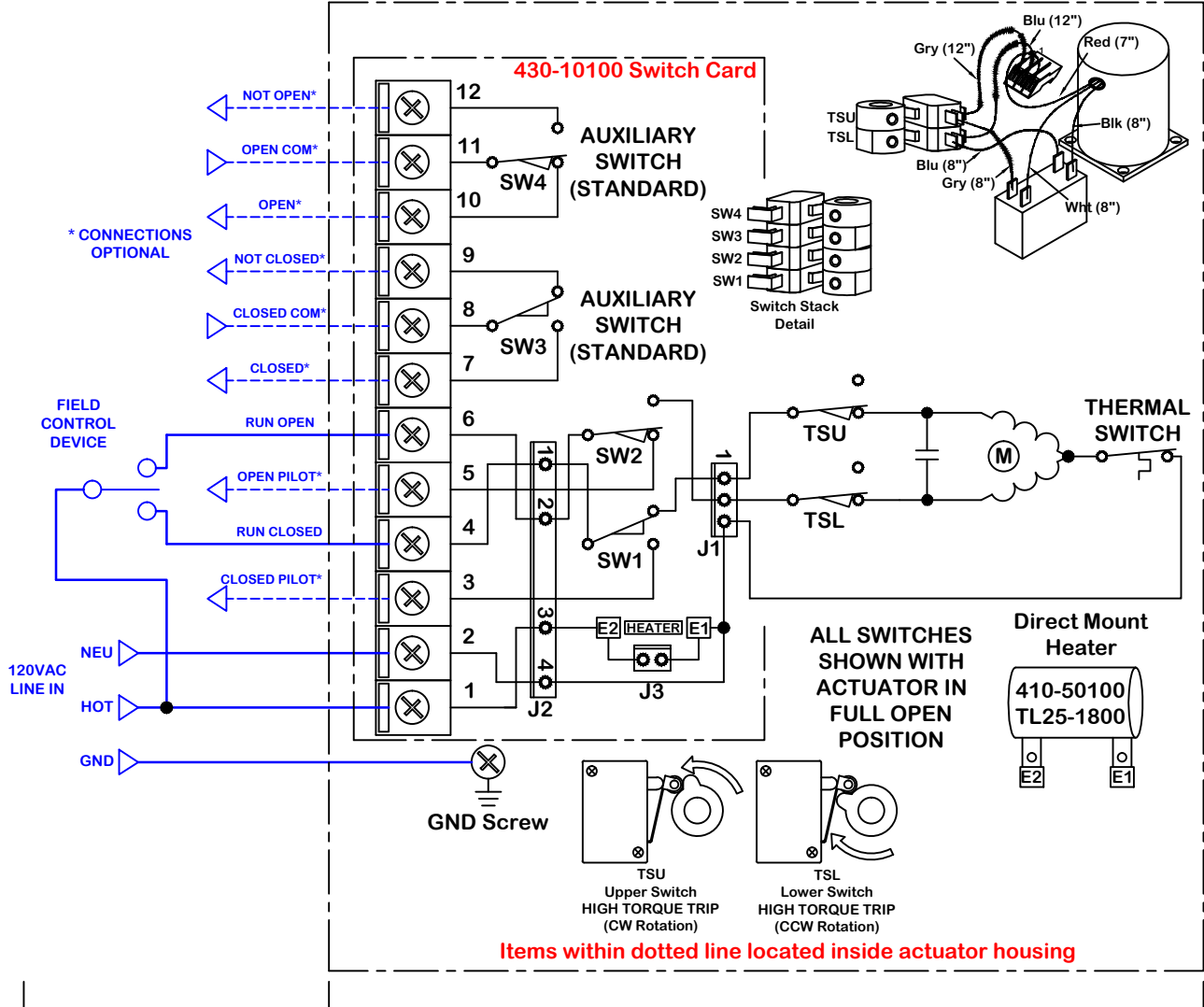
Wiring Diagram for 2 position or Jog Control. P2/3 Series 120vac Actuators with Torque Switches With optional 10 conductor lead

REV **B**

ProMation Engineering, Inc.  
16138 Flight Path Drive  
Brooksville, FL 34604  
Ph:352-544-8436 Fx(352-544-8439)



Optional External Wiring (Factory)



**Field Wiring (By Others)**

**Internal Wiring (FACTORY)**

Torque Switch Test: (Done after limit switches are set and stops are set)

- 1 Run to CLOSE (cam switch turns off motor).
- 2 Use screwdriver to turn on motor and allow internal stop to hit stop screw.
- 3 Upper torq switch cam will activate switch to stop motor again.
- 4 Run to OPEN (cam switch turns off motor).
- 5 Use screwdriver to turn on motor and allow internal stop to hit stop screw.
- 6 Lower torq switch cam will activate switch to stop motor again.
- 7 Run to CLOSE (cam switch turns off motor).
- 8 Test complete.

Use For:

**P2/3 -120N4-TS w 10 cond lead**

**Actuator ships in fully closed position!**

This document is the property of ProMation Engineering, Inc. Distribution of this document without the written consent of the owner is strictly forbidden. Failure to comply will incur a liability for damages.