

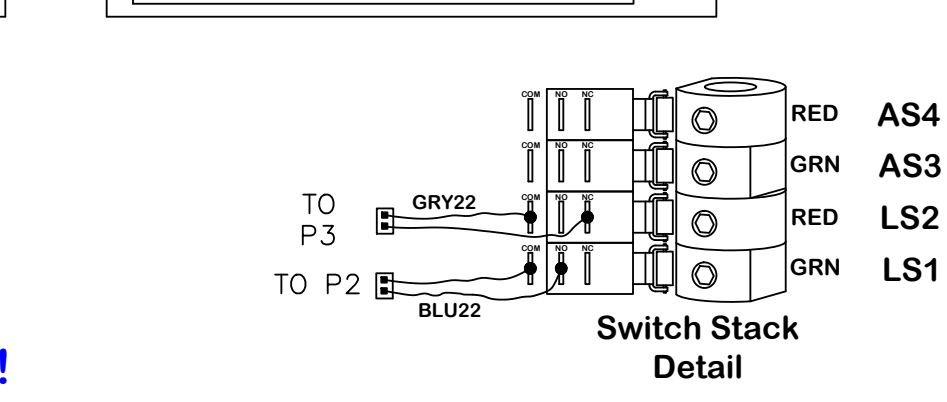
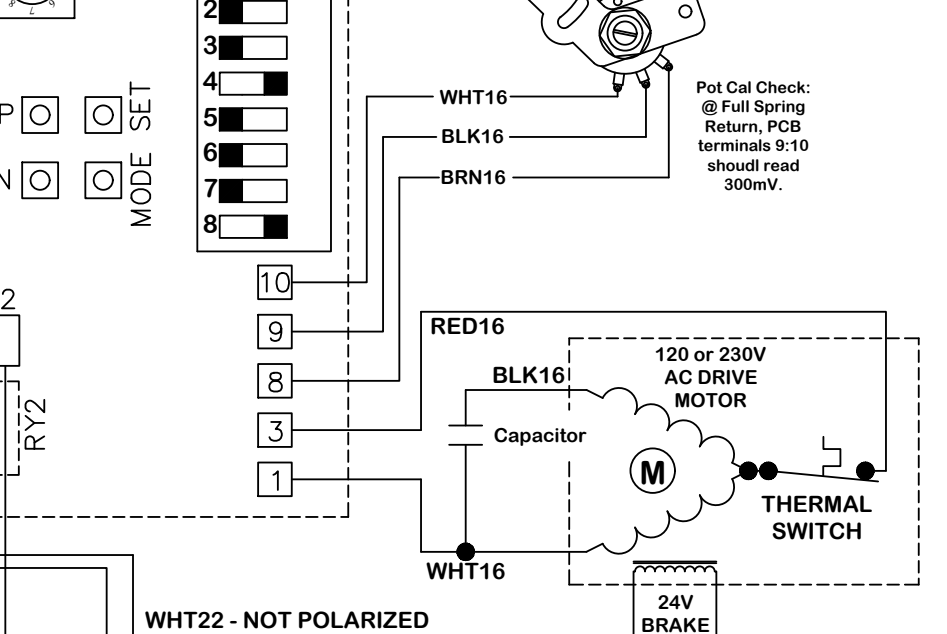
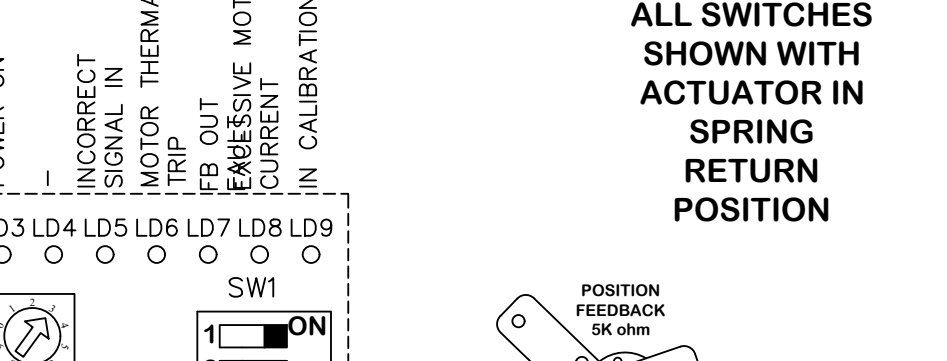
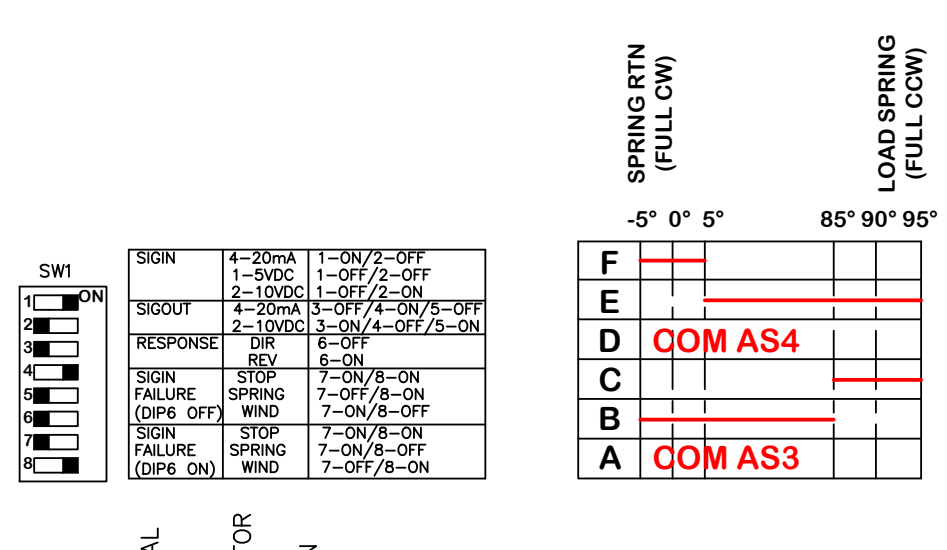
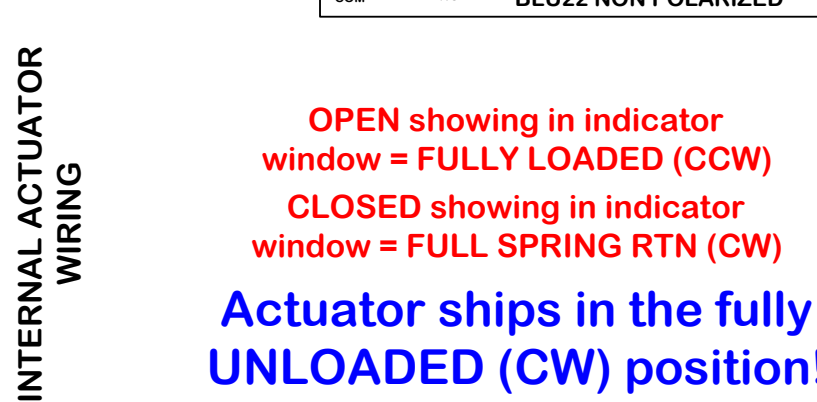
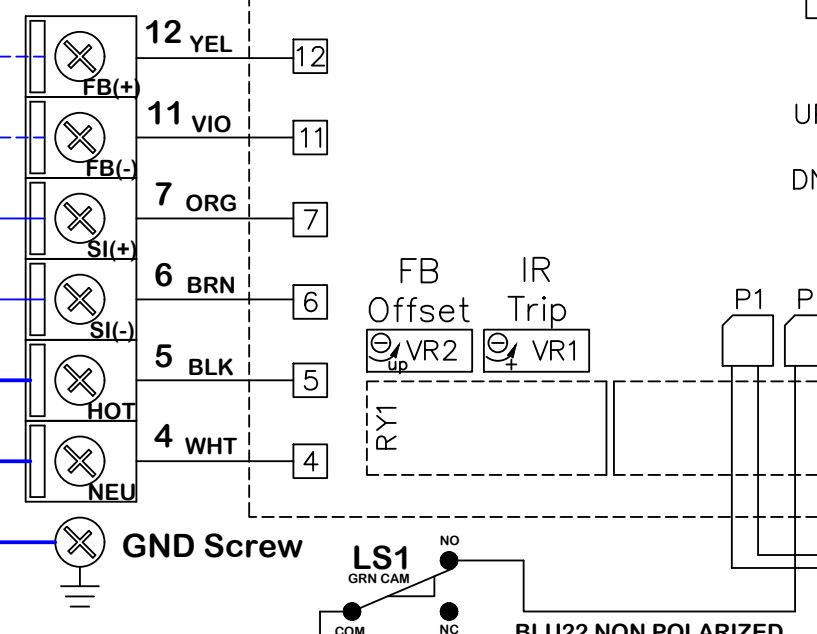
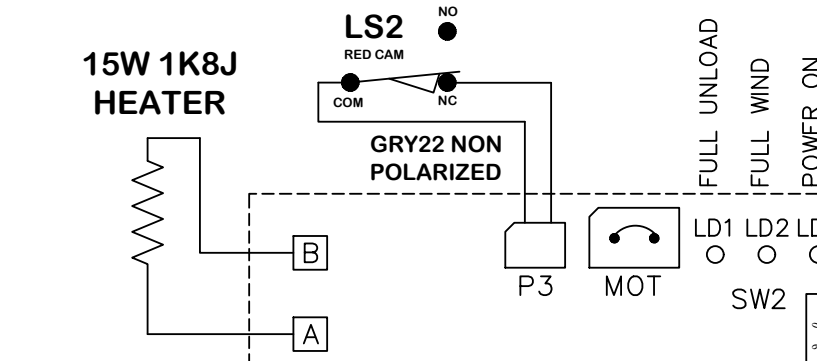
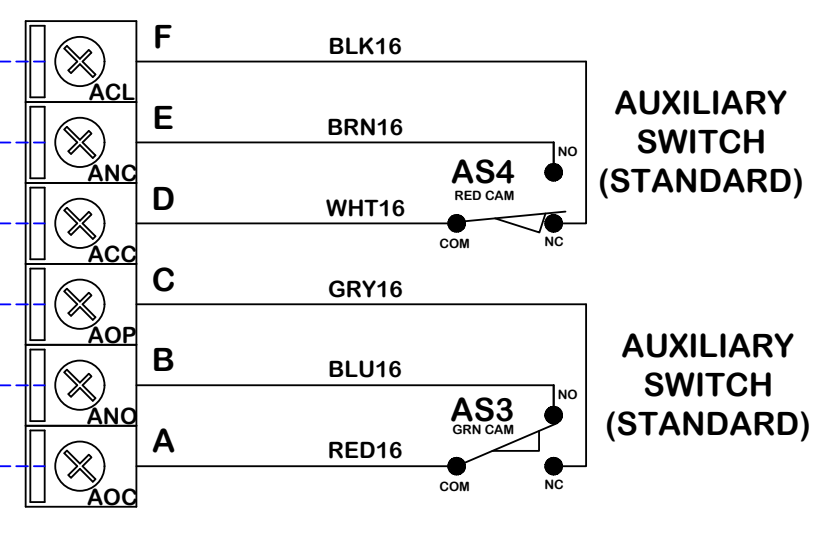
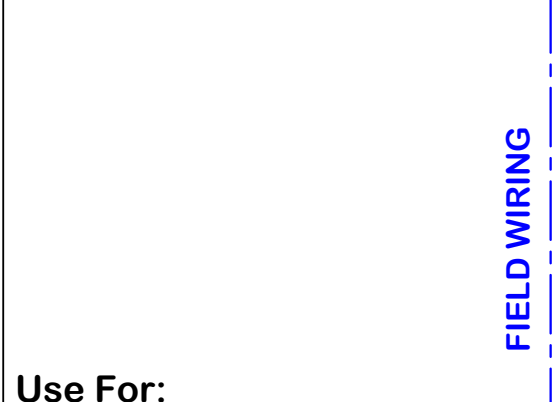
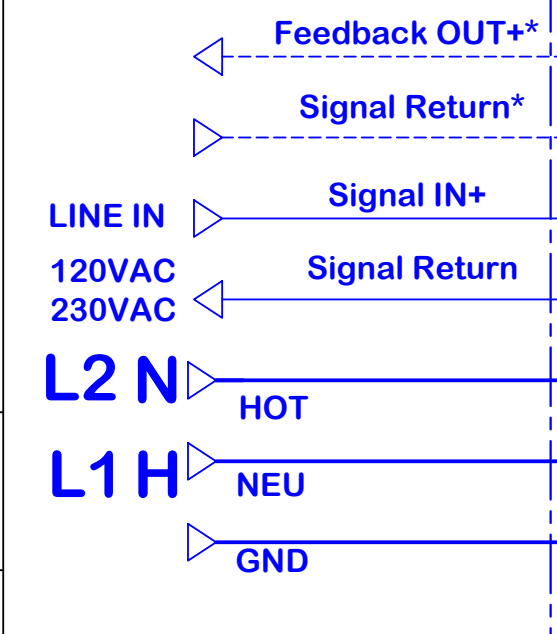
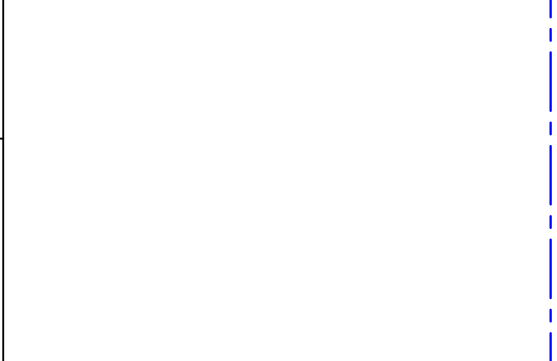
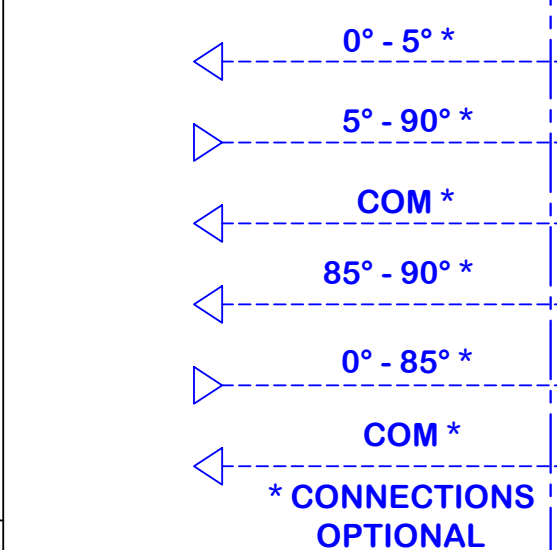
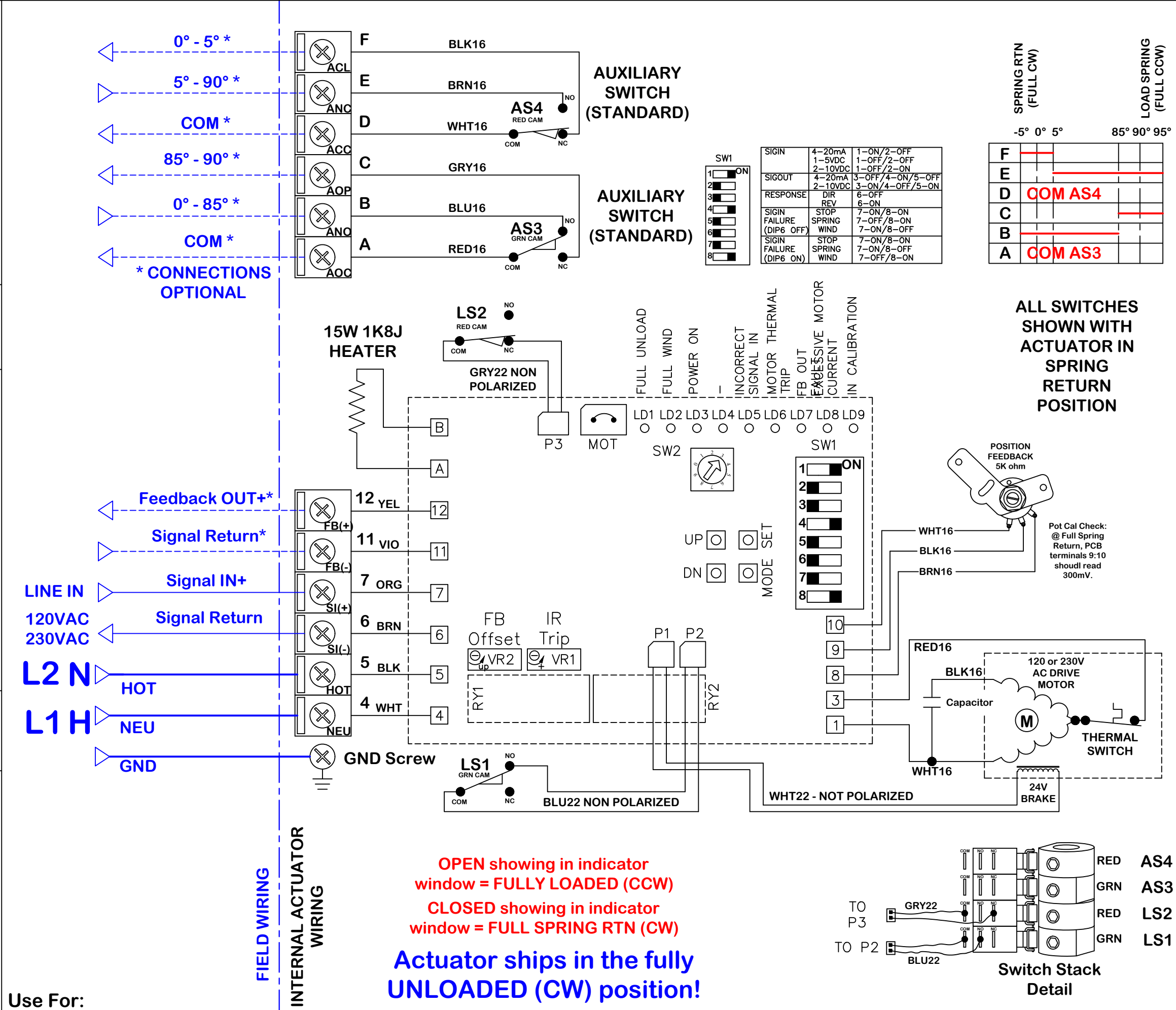
rev		change date		revision		name	
j		naming		dwn by:		Date	
i		Added 230 L1 and L2		BUJW		9.3.2014	
h		Removed duplicate board		DUG		DUG	
g		Corrected wire colors on pot		DUG		DUG	
f		Added detail on pot, coms, and position board		KHL		KHL	
e		Added detail on pot, coms, and position board		KHL		KHL	
d		Edited DIP switch settings		KHL		KHL	
c		Formatting edits		KHL		KHL	
b		Formatting edits		KHL		KHL	
a		Formatting edits		KHL		KHL	
1		1/4/2021 9:22 AM		1/4/2021 9:22 AM		1/4/2021 9:22 AM	
0		1/4/2021 9:22 AM		1/4/2021 9:22 AM		1/4/2021 9:22 AM	
REV		H		H		H	

ProMation Engineering, Inc.
16138 Flight Path Drive
Brooksville, FL 34604
Ph:352-544-8436 Fx(352-544-8439)

Use For:

PA-D(O)-CW-120/230PS4(7)

Use For:



OPEN showing in indicator window = FULLY LOADED (CCW)
CLOSED showing in indicator window = FULL SPRING RTN (CW)
Actuator ships in the fully UNLOADED (CW) position!

This document is the property of ProMation Engineering, Inc. Distribution of this document without the written consent of the owner is strictly forbidden. Failure to comply will incur a liability for damages.