

rev	change date	revision	name	material no	ind	Wiring Diagram
d	01.23.18	01	DUG			
b						
c						
d						
e						
f						
g						
h						
noming				Date		
				dwn by: BJW		
				Date: 10.20.2014		
				scale: NONE		
				material no		
				ind		
				Wiring Diagram		
				material		
				REV		
				A		

Promation

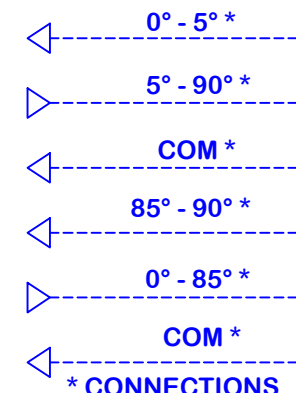
On/Off wiring diagram for 240VAC PA(O) Series CW Spring Return Actuators.

WD-850-A9A01.dwg

WD-850-A9A01

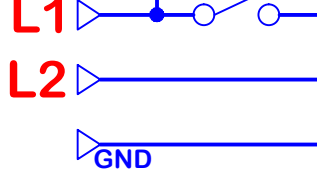
Use For:

PA/PAO-CW-2402S4

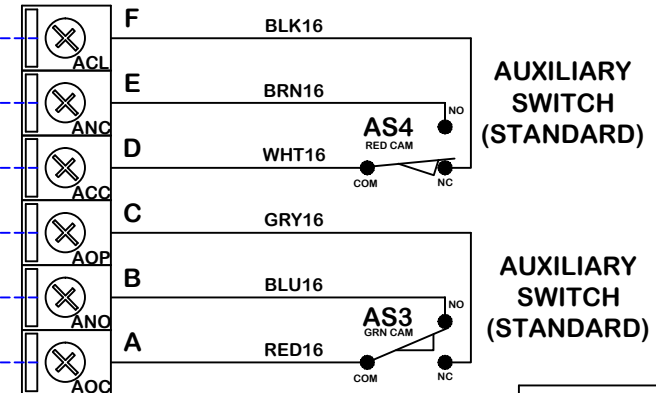


* CONNECTIONS OPTIONAL

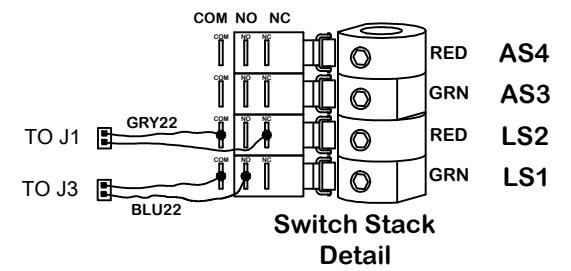
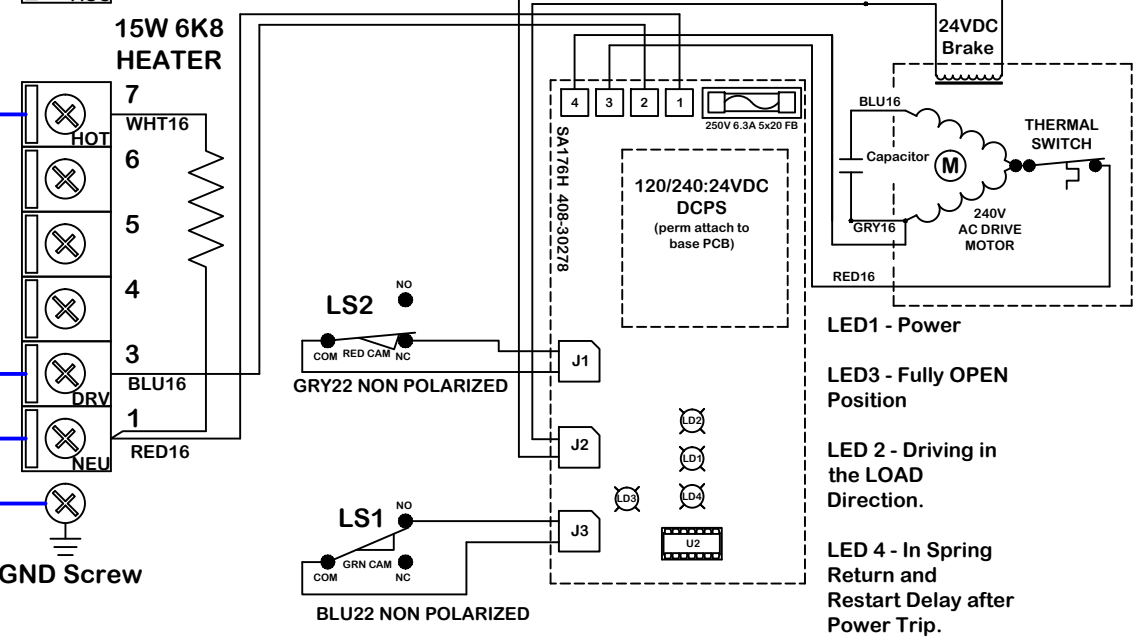
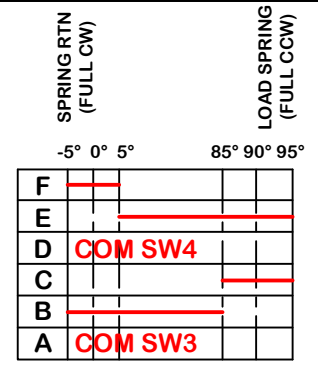
240VAC LINE IN
Voltage Potential between L1 and L2 must be single phase 240VAC ±10%



FIELD WIRING
INTERNAL ACTUATOR WIRING



OPEN showing in indicator window = FULLY LOADED (CCW)
CLOSED showing in indicator window = FULL SPRING RTN (CW)
Actuator ships in the fully UNLOADED (CW) position!



This document is the property of ProMation Engineering, Inc. Distribution of this document without the written consent of the owner is strictly forbidden. Failure to comply will incur a liability for damages.

ProMation Engineering, Inc.
16138 Flight Path Drive
Brooksville, FL 34604
Ph:352-544-8436 Fx(352-544-8439)