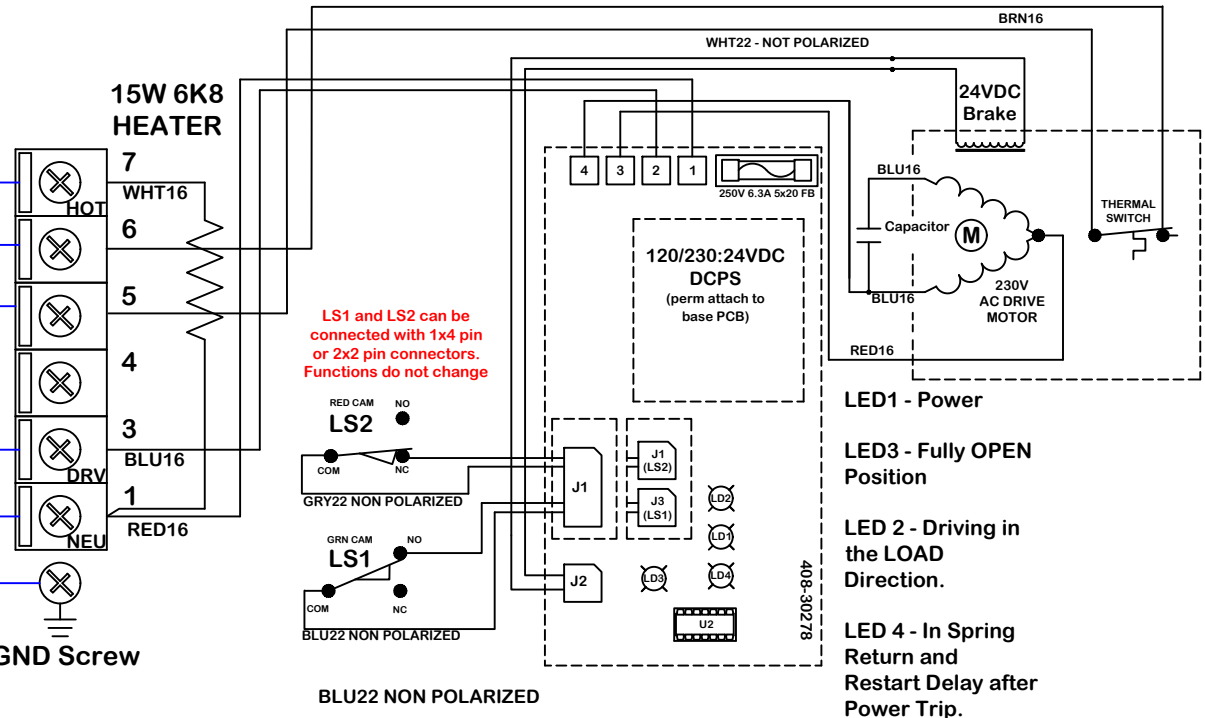
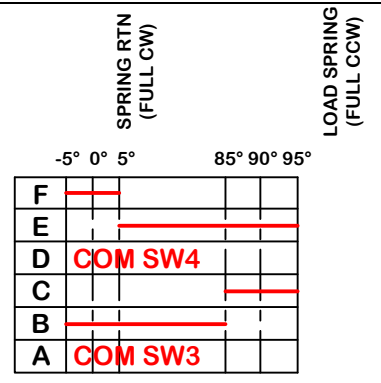
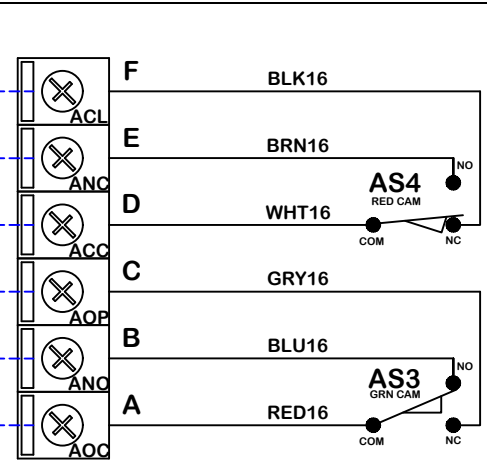
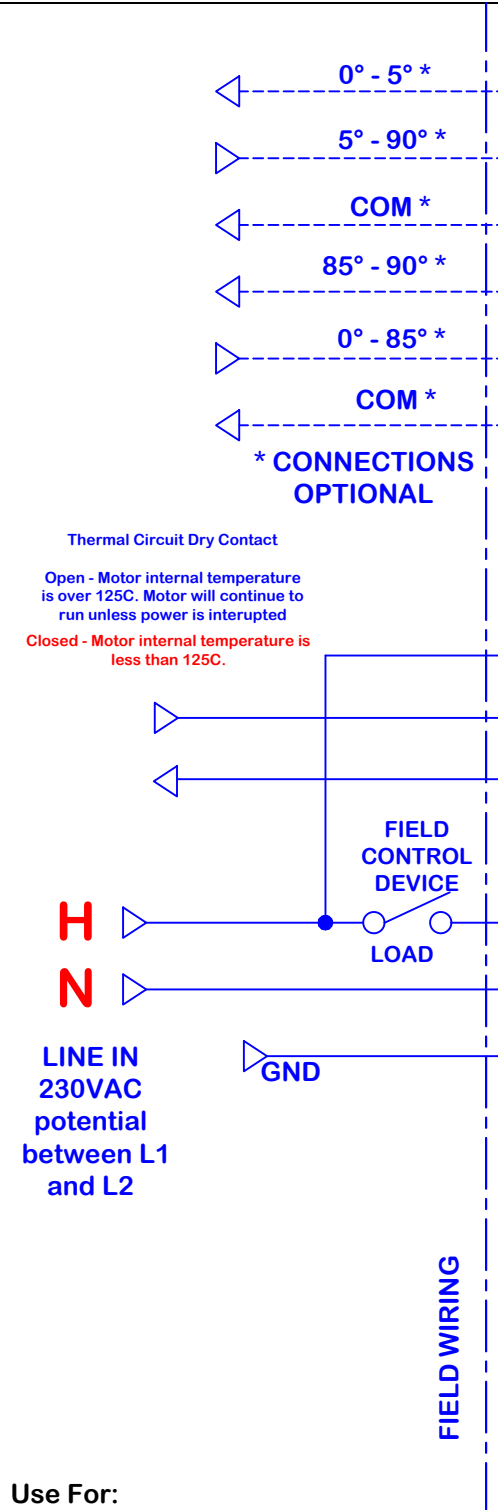
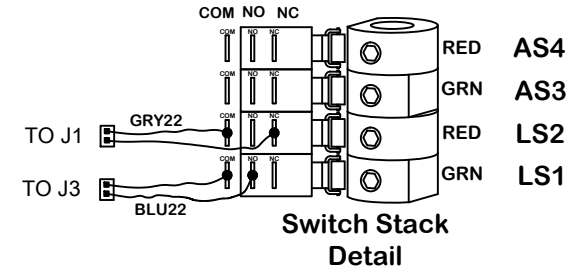


rev change	date	revision	name	dwg	scale	date	material no	ind	Wiring Diagram
A	01.02.18	B4A03 modified to 230 change voltage	DJG	DJG	NONE	10.20.2014			
B	01.07.20	Added 4 pin connector to control board	DJG	DJG					
Promotion									
WD-850-B5A03 B									
On/Off wiring diagram for 230VAC PB(O) CW Spring Return with internal dry contact Motor thermo-switch monitor (MTC)									
WD-850-B5A03 B.dwg									
REV B									



OPEN showing in indicator window = FULLY LOADED (CCW)
CLOSED showing in indicator window = FULL SPRING RTN (CW)

Actuator ships in the fully UNLOADED (CW) position!



Use For:

PB/PBO-CW-2302S4-MTC

This document is the property of ProMation Engineering, Inc. Distribution of this document without the written consent of the owner is strictly forbidden. Failure to comply will incur a liability for damages.