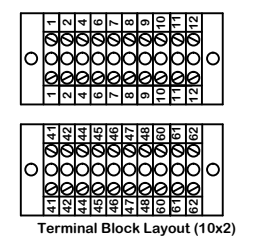
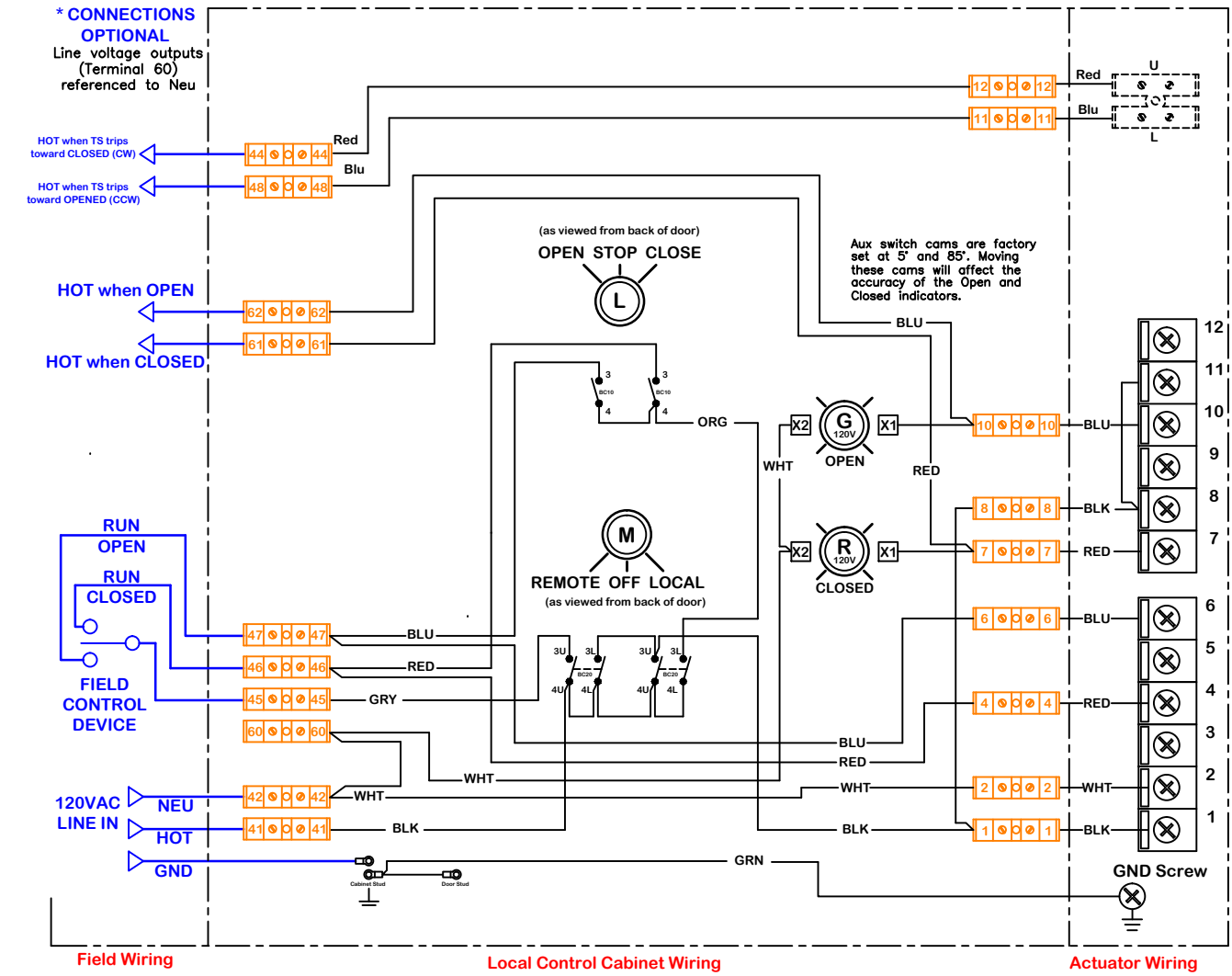


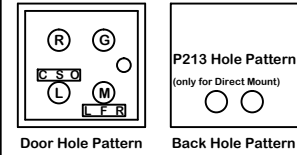
rev	change	date	revision	name	scale	material no	ind	material
C	08/24/12		Forming and detail work	KAL	NONE			
D	06/16/13		Edited terminal block layout	KAL				
E	06/15/13		Added P/S/F Notes on right	KAL				
F	03/27/17		Added Opt Ind TS indicator out	DAS				
G								
H								
I								
naming					dwg by:	Date		
					BJW	11.10.2011		
					scale	material no	Wiring Diagram	
					NONE			
					5/1/2017 4:57 PM			
					WD 875 LB 213 120 D			
					Wiring Diagram for Local Control Station			
					P2~13 Series 120VAC Actuators			
					REV			
					G			

**Description of Operation:**  
Local / Remote On/Off/Jog control  
EOT HOT outputs as well as EOT indicator lights.

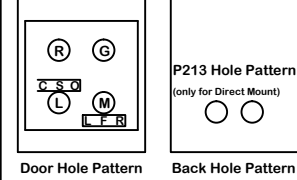


Term Block Filename: Altech 875 LB213120D

Painted (P) or Stainless (S)  
Faceplate Filename: 4 hole 5x5 Steel



Fiberglass (F)  
Faceplate Filename: 4 hole 5x5 Fiberglass



**Use this solution for:**  
**P2~P13 Series**

Use For:

**OPT LCS LB P2~13 P/S/F 120 D/R**

This document is the property of ProMotion Engineering, Inc. Distribution of this document without the written consent of the owner is strictly forbidden. Failure to comply will incur a liability for damages.

ProMotion Engineering, Inc.  
16138 Flight Path Drive  
Brooksville, FL 34604  
Ph:352-544-8436 Fx(352-544-8439)