

rev	change date	change	description	name	date	scale	material no	ind	material
D	10/22/13	10/22/13	New Document	KAL	9/27/2018 3:39 PM	NONE	WD 875 LB PA 120 D		
C	08/27/16	08/27/16	changed feedback wiring to F and C	DAE					
B									
A									
g									
f									
e									
d									
c									
b									
a									
h									
ProMation Wiring Diagram for Local Control Station PA Series 120VAC Actuators WD 875 LB PA 120 D.dwg REV B									

Description of Operation:
 Local / Remote On/Off control
 EOT HOT outputs as well as EOT indicator lights.

*** CONNECTIONS OPTIONAL**

Line voltage outputs referenced to Neu (Terminal 60)

HOT when OPEN

HOT when CLOSED

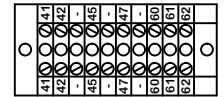
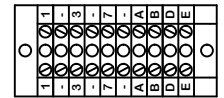
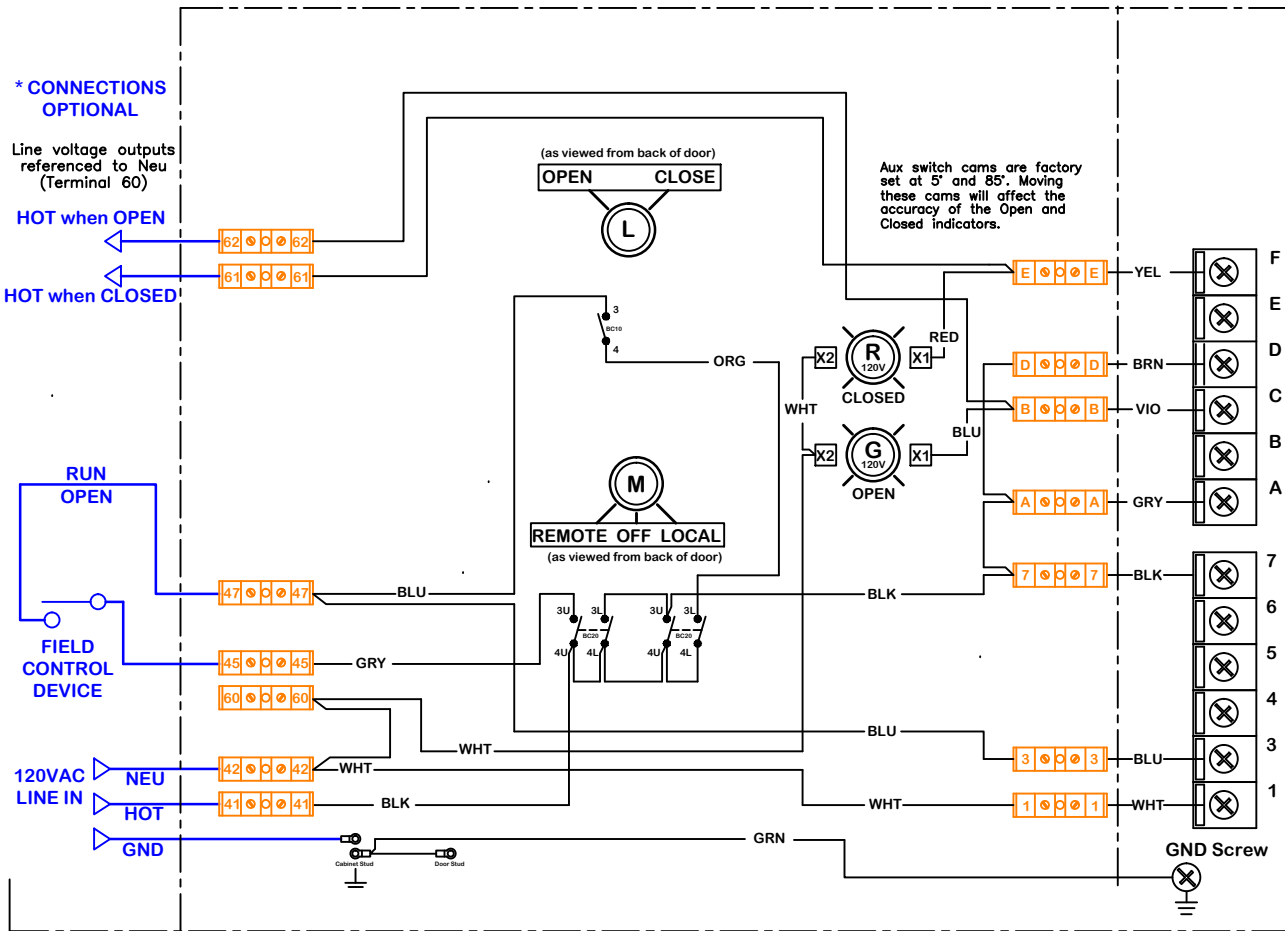
RUN OPEN
 FIELD CONTROL DEVICE

120VAC LINE IN
 NEU
 HOT
 GND

Field Wiring

Local Control Cabinet Wiring

Actuator Wiring

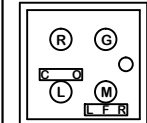


Terminal Block Layout (10x2)

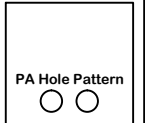
Term Block Filename: Altech 875-LB411-PA

Faceplate Filename: 4 hole 5x5 Steel 110111

Notes:



Door Hole Pattern



Back Hole Pattern

**Use this solution for:
 PA Series**

Use For:

OPT LCS LB PA P/S/F 120 D/R

ProMation Engineering, Inc.
 16138 Flight Path Drive
 Brooksville, FL 34604
 Ph:352-544-8436 Fx:352-544-8439

This document is the property of ProMation Engineering, Inc.
 Distribution of this document without the written consent of the owner is strictly forbidden.
 Failure to comply will incur a liability for damages.