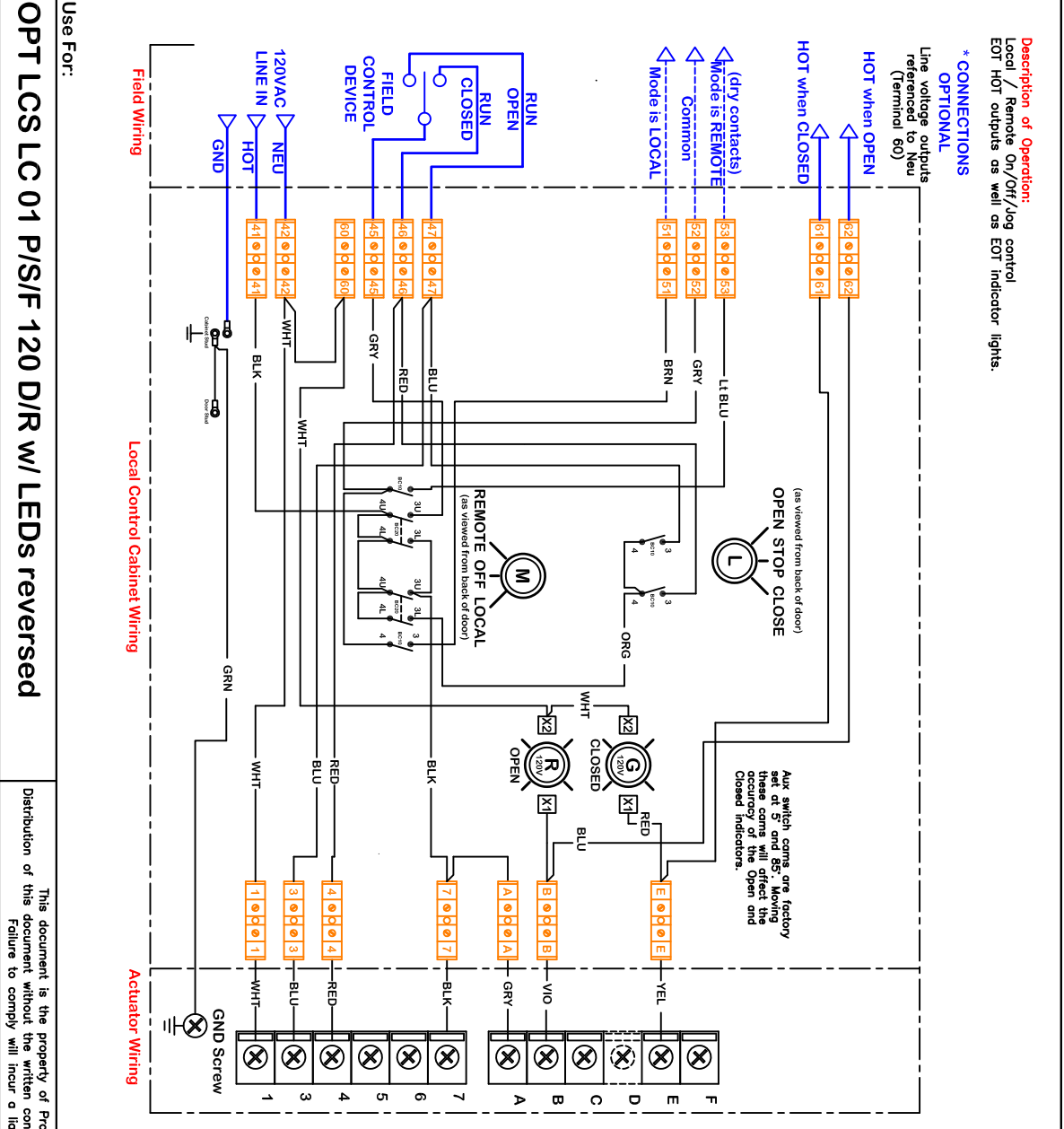


| | | | | |
|---|----------|-----------------------------|-------------------|---------------------------|
| rev | Change | name | 4/11/2022 1:08 PM | WD 875 LC 01 120 D IR.dwg |
| c | 02.24.12 | revision | | |
| d | | Formatting and detail edits | | |
| e | | KEL | | |
| f | | | | |
| g | | | | |
| h | | | | |
| i | | | | |
| j | | | | |
| naming | | dwn by: | BJW | Date |
| material no | | ind | | |
| Writing Diagram | | material | | |
| REV | | C | | |
| Writing Diagram for Local Control Station | | P1 Series 120VAC Actuators | | |
| WD 875 LC 01 120 D IR | | Scale | | |
| | | NONE | | |
| | | Scale | | |
| | | NONE | | |



Use For: **OPT LCS LC 01 P/S/F 120 D/R w/ LEDs reversed**

This document is the property of ProMotion Engineering, Inc. Distribution of this document without the written consent of the owner is strictly forbidden. Failure to comply will incur a liability for damages.

Notes:

Term Block
Filename: Aitech 875 LC01120D
Faceplate
Filename: 4 hole 5x5 Steel

Terminal Block Layout (10x2)

| | | | | | | | | | |
|----|----|----|----|----|----|----|----|----|----|
| 1 | 2 | 3 | 4 | 5 | 6 | 7 | 8 | 9 | 10 |
| 11 | 12 | 13 | 14 | 15 | 16 | 17 | 18 | 19 | 20 |
| 21 | 22 | 23 | 24 | 25 | 26 | 27 | 28 | 29 | 30 |
| 31 | 32 | 33 | 34 | 35 | 36 | 37 | 38 | 39 | 40 |
| 41 | 42 | 43 | 44 | 45 | 46 | 47 | 48 | 49 | 50 |
| 51 | 52 | 53 | 54 | 55 | 56 | 57 | 58 | 59 | 60 |

Door Hole Pattern

Back Hole Pattern

P1 Hole Pattern

Use this solution for: P1 Series