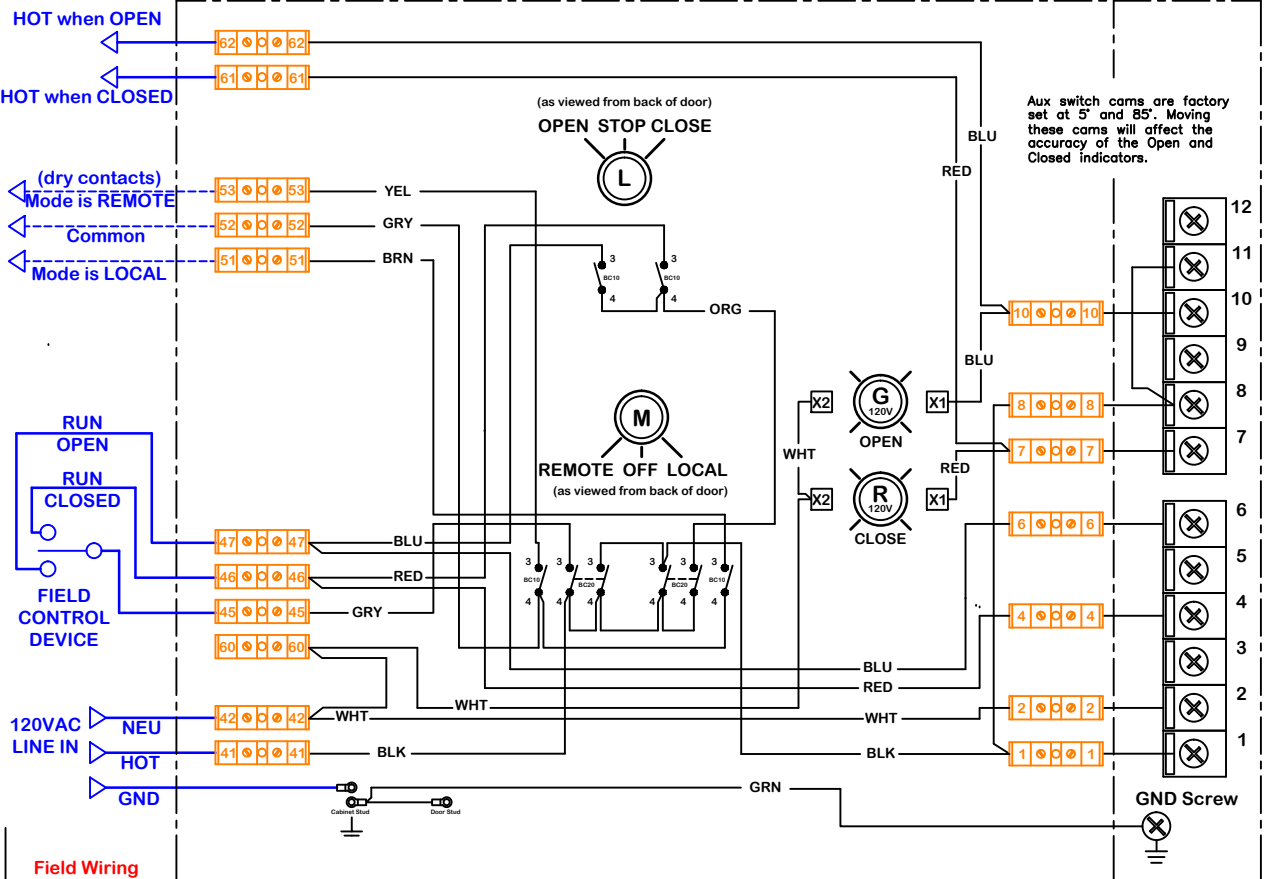


rev change date		revision		name		material no		ind		Wiring Diagram	
C	06/24/12	Forming and detail edit		KHL							
D	02/23/16	T33 wire YEL was LI BLU		TJM							
E											
F											
G											
H											
I											
J											
naming		dwg by: BJW		Date: 3.2.2012		material no		ind		Wiring Diagram	
scale		NONE									
ProMotion		Wiring Diagram for Local Control Station		WD 875 LC 213 120 DR							
REV D		P2~13 Series 120VAC Actuators		WD 875 LC 213 120 DR.dwg							

Description of Operation:
 Provides Local/Remote control of P2~13 Series On/Off actuators. Indicator lights are provided as indication of actuator at end of travel. HOT outputs are provided for external indicators of end of travel. Dry contact output for remote indication of Local/Off/Auto switch position.

*** CONNECTIONS OPTIONAL**

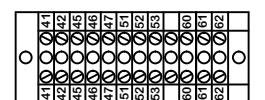
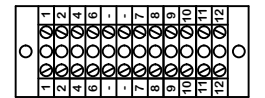
Line voltage outputs referenced to Neu (Terminal 60)



Use For:

Local Control Cabinet Wiring

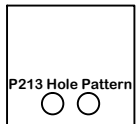
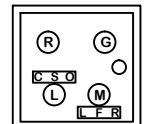
Actuator Wiring



Terminal Block Layout (12x2)

Term Block Filename: **Altech 875 LC213120D**
 Faceplate Filename: **4 hole 5X5 Steel**

Enclosure front & back hole patterns



Door Hole Pattern Back Hole Pattern

Notes:

**Use this solution for:
 P2~P13 Series**

ProMotion Engineering, Inc.
 16138 Flight Path Drive
 Brooksville, FL 34604
 Ph:352-544-8436 Fx(352-544-8439)

OPT LCS LC P2~13 P/S/F 120 D/R

This document is the property of ProMotion Engineering, Inc. Distribution of this document without the written consent of the owner is strictly forbidden. Failure to comply will incur a liability for damages.