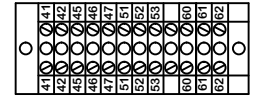
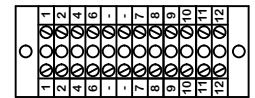
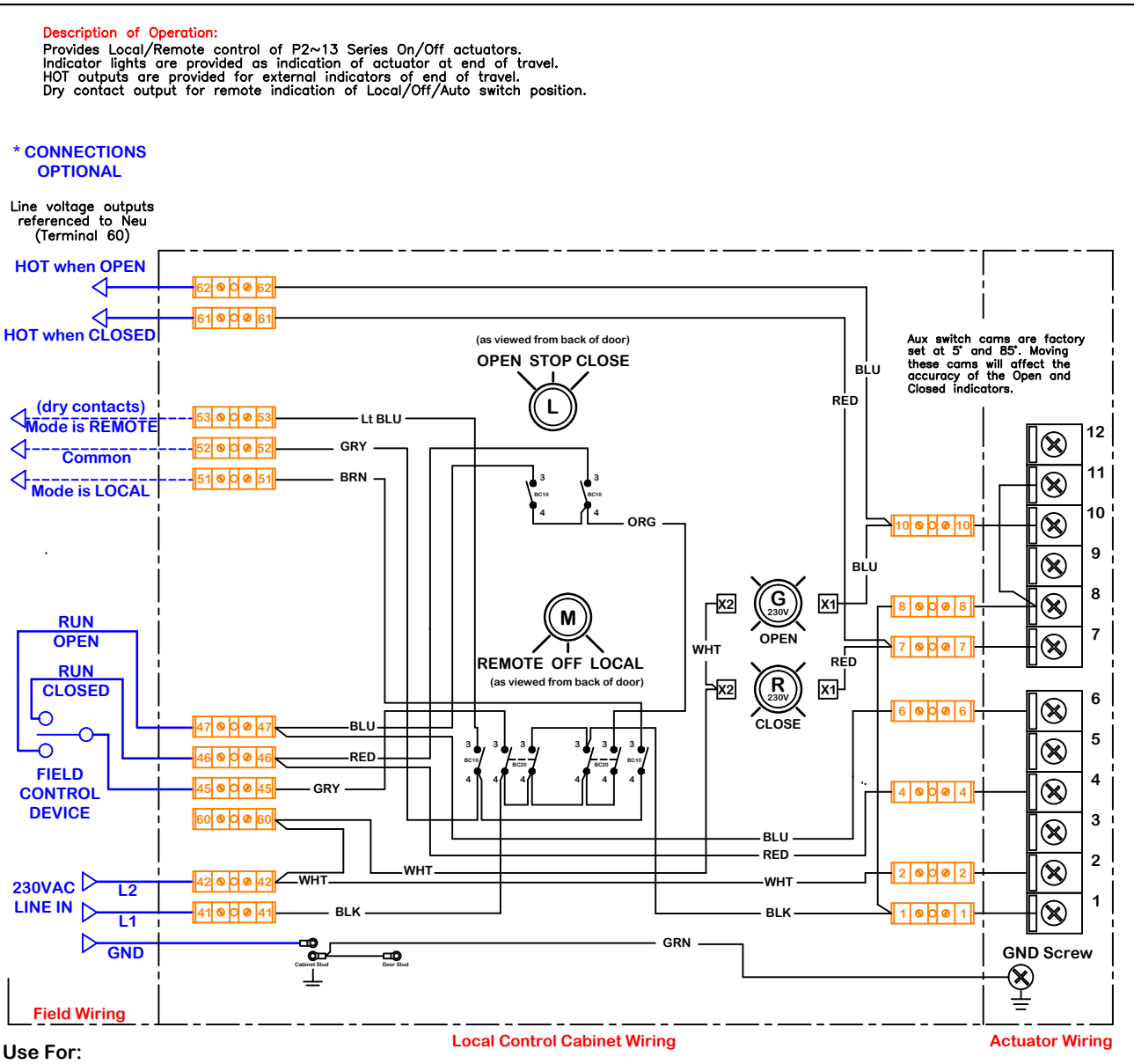


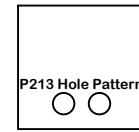
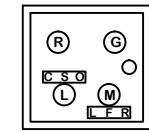
rev	change	date	08/24/12	Forming and detail date	Rev
c					
d					
e					
f					
g					
h					
i					
j					
naming					
Date					
dwn by: BJW					
3.2.2012					
Date					
scale					
NONE					
material no					
ind					
Wiring Diagram					
material					
REV					
C					
WD 875 LC 213 230 D					
Wiring Diagram for Local Control Station					
P2~13 Series 230VAC Actuators					
WD 875 LC 213 230 D.dwg					



Terminal Block Layout (12x2)

Term Block Filename: Altech 875 LC213230D
 Faceplate Filename: 4 hole 5X5 Steel

Enclosure front & back hole patterns



Door Hole Pattern Back Hole Pattern

Notes:

**Use this solution for:
 P2~P13 Series**

ProMation Engineering, Inc.
 16138 Flight Path Drive
 Brooksville, FL 34604
 Ph:352-544-8436 Fx(352-544-8439)

OPT LCS LC P2~13 P/S/F 230 D/R

This document is the property of ProMation Engineering, Inc. Distribution of this document without the written consent of the owner is strictly forbidden. Failure to comply will incur a liability for damages.