

rev	change date	c	08.24.12	Formatting and detail edits	name
d	05.31.13	e	Changed wiring for (N) switching	KHL	
f		f		KHL	
g		g			
h		h			
i		i			
j		j			

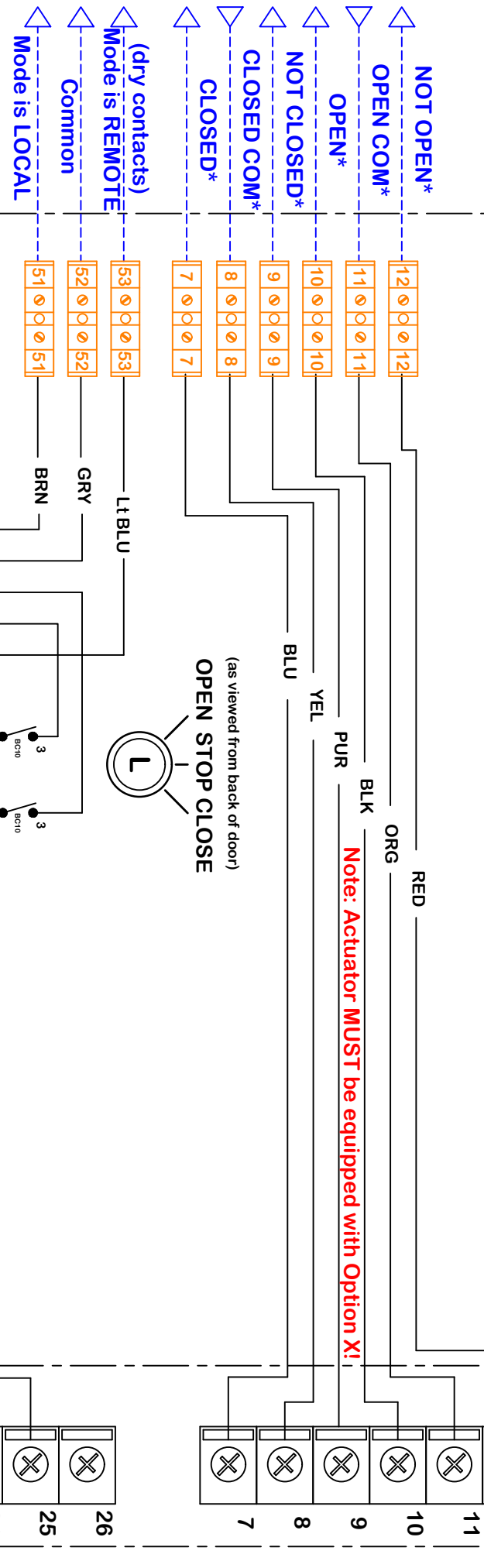
revision	5/31/2013 8:18 AM	name	Promation
scale	scale	dwg by:	BJW
material no	ind	Date	3.2.2012
Wiring Diagram for Local Control Station	Wiring Diagram		

WD 875 LD 213 24A D	WD 875 LD 213 24A D.dwg	REV	D
Wiring Diagram for Local Control Station	P2~13 Series 24VAC Actuators		
Material	Wiring Diagram		

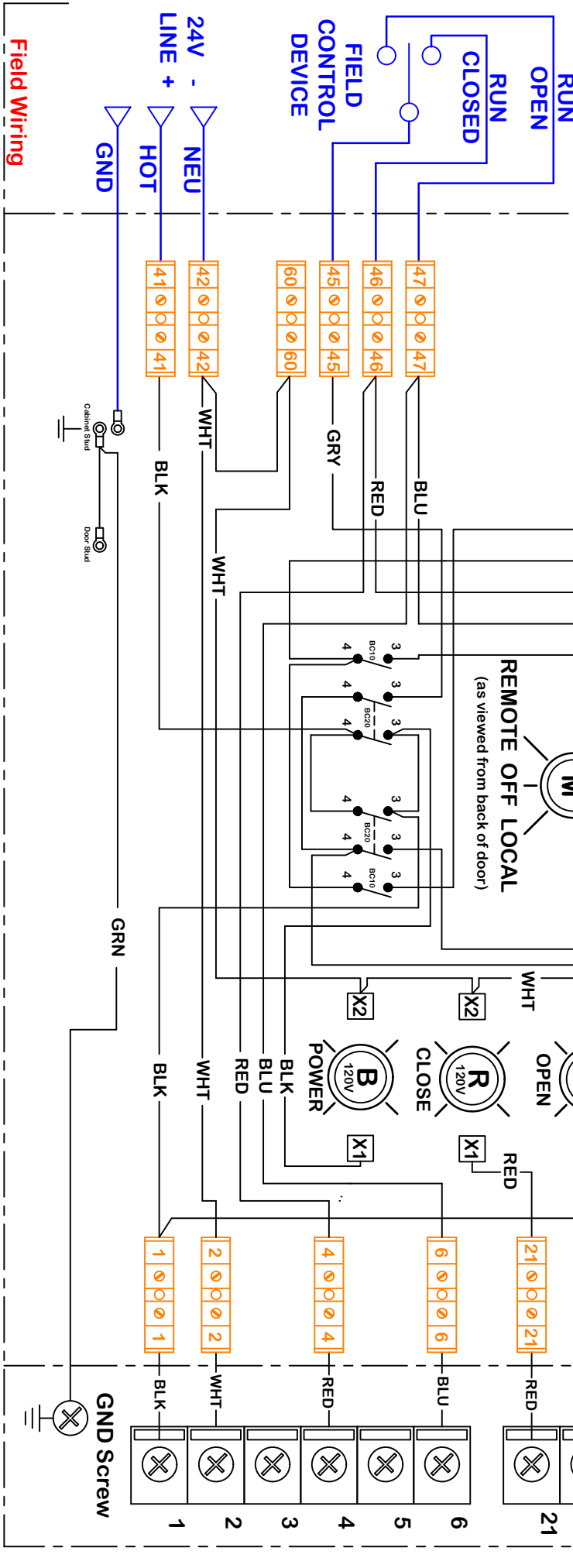
**Description of Operation:**  
 Provides Local/Remote control of P2~13 Series On/Off actuators. Indicator lights are provided as indication of actuator at end of travel as well as to show Power. Auxiliary contacts are carried through enclosure to a terminal block for easy access. Dry contact output for remote indication of Local/Off/Auto switch position.

Aux switch cams are factory set at 5° and 85°. Moving these cams will affect the accuracy of the Open and Closed indicators.

**\* CONNECTIONS OPTIONAL**



Note: LCS-D models for FACTORY INSTALLATION will utilize the 5th & 6th AUX switches to provide dynamic status indication on lights regardless of state of control circuitry. For FIELD INSTALLATION, that functionality MUST utilize the existing 3rd & 4th AUX switches and removes the availability of those contacts for remote use. (A relay could be field installed to provide dry contact functionality however).



Use For:

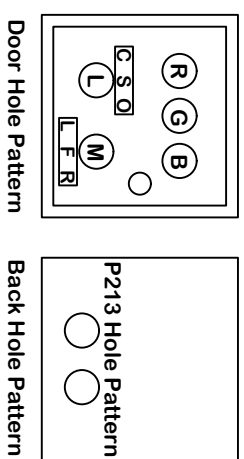
Local Control Cabinet Wiring

Actuator Wiring

**OPT LCS LD P2~13 P/S/F 24AC/DC D/R**

1	2	4	9	1	7	8	9	10	11	12
2	3	5	10	2	8	10	11	12		
3	4	6	11	3	9	11	12			
4	5	7	12	4	10	12				
5	6	8		5	11					
6	7	9		6	12					
7	8	10		7						
8	9	11		8						
9	10	12		9						
10	11			10						
11	12			11						
12				12						

Terminal Block Layout (12x2)  
 Term Block Altech 875 LD213120D  
 Filename: 5 hole 5x5 Steel



Notes:

Use this solution for:

**P2~P13 Series**

This document is the property of Promation Engineering, Inc. Distribution of this document without the written consent of the owner is strictly forbidden. Failure to comply will incur a liability for damages.

Promation Engineering, Inc.  
 16138 Flight Path Drive  
 Brooksville, FL 34604  
 Ph: 352-544-8436 Fx: 352-544-8439