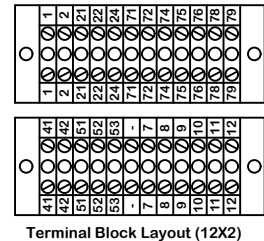
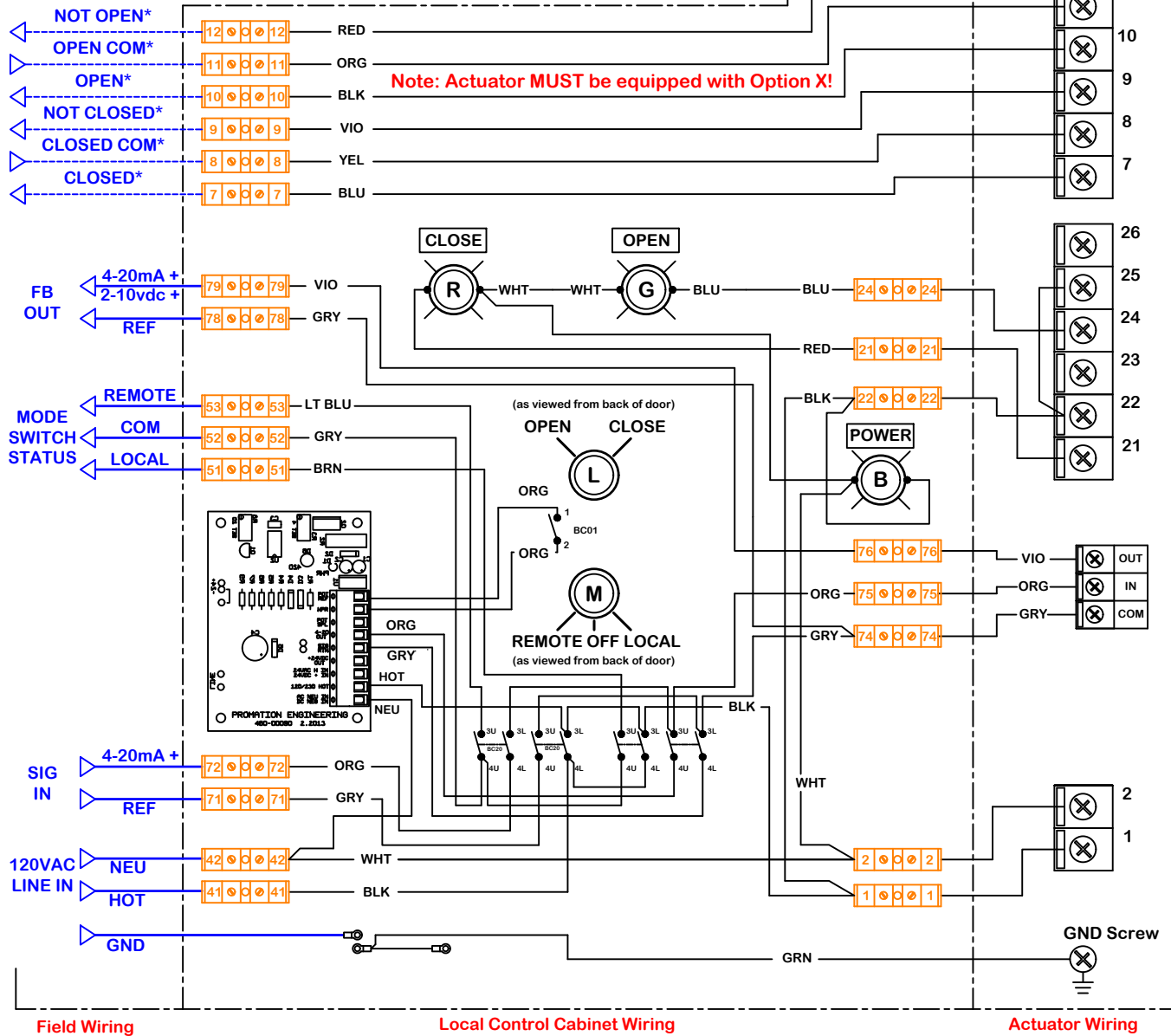


rev change date	revision	name	dwn by:	Date	material no	ind	Wiring Diagram
c	08/24/12	Formatting and detail edits	KHL				
d	01/06/14	Changed NC to NO switch	KHL				
e	08/03/2015	Changed Face Plate Partname	KHL				
f	11/24/20	Updated wire colors	DJG				
g							
h							
i							
j							
naming							
scale							
NONE							
material no							
ind							
Wiring Diagram							
material							
WD 875 LG 213 120 D RevF							
Wiring Diagram for Local Control Station							
P2~13 Series 120VAC Modulating Actuators							
WD 875 LG 213 120 D RevF.dwg							
REV							
F							

Description of Operation:

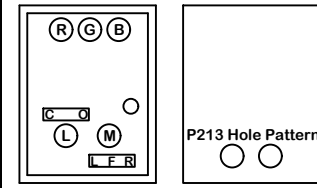
Provides local/remote control of P2~13 Series Proportional control actuators. Auxiliary switches are utilized to drive the indicator lights.
 A door mounted switch generates a 4 OR 20mA signal to the actuator when in the LOCAL mode.
 A 4~20mA feedback signal is passed through the cabinet to the end user.

Aux switch cams are factory set at 5° and 85°. Moving these cams will affect the accuracy of the Open and Closed indicators.



Terminal Block Layout (12X2)

Term Block Filename: Altech 875 LG213P120D
 FacePlate Filename: 5 hole 5x7 NO display Steel (No Stop)



Door Hole Pattern Back Hole Pattern
 Enclosure front & back hole patterns

Notes:
THIS IS AN 8X6X6 ENCLOSURE!

Specify Control:
 4-20mA Control
 2-10vdc Control

Use this solution for:
P2~13 Series
Use LF for:
P1, PA & PL Series

Use For:
OPT LCS LG 213 P/S/F 120 D/R

This document is the property of ProMation Engineering, Inc. Distribution of this document without the written consent of the owner is strictly forbidden. Failure to comply will incur a liability for damages.