

PROMATION ENGINEERING

Precision Actuation for Industry

Timer Options Modify the run time for Electric Actuators



Timer Option installed in a
P3-120VAC series actuator

Allows an actuator to
open or close more slowly

Can alternately allow an actuator
to operate on a timed schedule
without an outside controller

For On/Off/Jog P1 through P13
series quarter-turn actuators 120V,
230V installations and select 24V
installations.

Reduced Run Time Based Control - The easily programmable timer allows independent on time and off time in increments from 0.1 seconds to 100 hours. This allows the user to specify how much to modify the actuator run time for your unique application.

Time Cycled Operation - The programmable timer can act as a controller for an actuator operating on a specific schedule, valve open for 10 minutes and then closed for 3 hours for instance. Open time and Closed time can be independently set for up to 100 hours each.

Securely Mounted - Mounted on a bracket and securely attached to the geartrain motor plate in P2-13 series actuators (shown above). Mounted in a separate enclosure for P1 series actuators (see page 2).

Timer Options

Features:

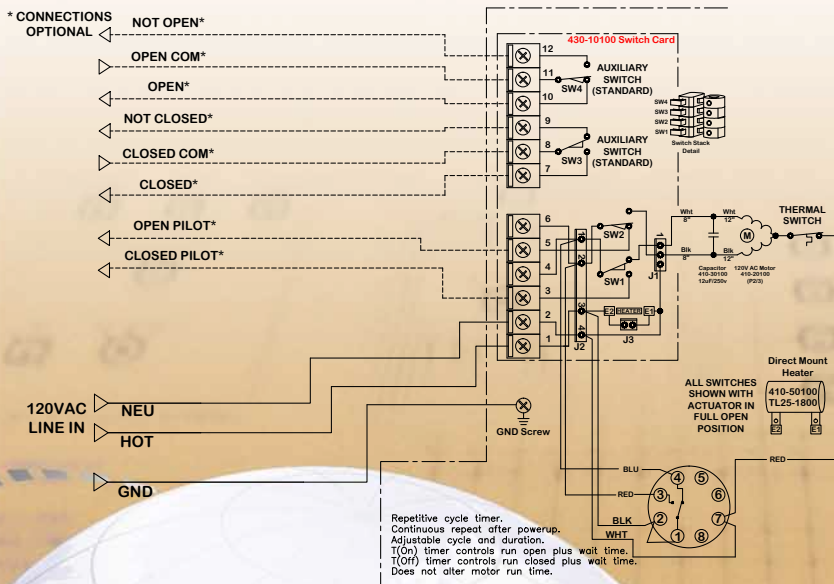
- Timer provides relay controlled variable timing for On/Off/Jog actuators
- On time and Off time are adjustable
- Coarse and fine timing adjustments are standard.
- Available for 24vac, 24vdc, 120vac and 230vac models



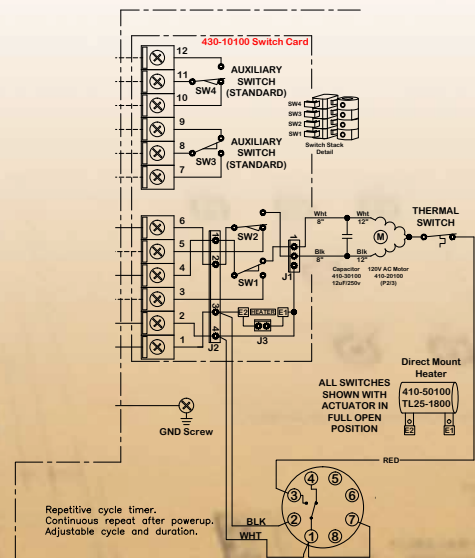
Timer Option installed in an external housing for a P1-120VAC series actuator

SAMPLE DIAGRAMS

Refer to the proper IOM for your actuator for the correct wiring diagram or visit www.promation.com.



Wiring diagram for *time cycled operation* for P2 actuators.



Wiring diagram for *delayed run time* for P2 actuators.

| For Product Family | Position Feedback for: | Actuator Voltage | Order Information |
|--------------------|------------------------|------------------|-----------------------|
| P1 24-AC | On/Off/Jog | 24vac | OPT-Timer-Li-P1 |
| P1 120/230 | On/Off/Jog | 120vac, 230vac | OPT-Timer-Li-P1 |
| P2-8 24-AC | On/Off/Jog | 24vac | OPT-Timer-Li-P28 |
| P2-13 120/230 | On/Off/Jog | 120vac | OPT-Timer-Li-120-P213 |

Timer Options cannot be used with Proportional control units.



PROMATION ENGINEERING
Precision Actuation for Industry

16138 Flight Path Drive
Brooksville, FL 34604
Phone (352) 544-8436 Fax (352) 544-8439
email: sales@promationei.com



Use your smart phone barcode scanner app here.