



PROMATION ENGINEERING

Precision Actuation for Industry

Extended Duty Motors 75%/50% Duty Cycle Motors



Extended duty cycle DC motors
increase performance and reliability
through longer run times

For On/Off/Jog P2 through P13 series
quarter-turn actuators 120vac or
230vac installations.

P456 120N4-ED
75% Duty Cycle for the
torque range 3,500-5,750 in
lbs (400-650Nm).

DC Motors - Cool running DC motors provide 75% duty cycle for P Series P2~8 actuators and 50% duty cycle for P9~13. Standard P2~13 actuators have a rated 25% duty cycle at ambient temperatures.

-ED Controller - ProMation Engineering -ED control board is the interface between incoming 120/230vac and the dc motor.

Standard P Series Chassis - The -ED option uses standard P Series enclosures and geartrains for Rugged ProMation performance.

Factory Installed - Must be installed at the time of initial order, -ED products cannot be field installed.

Extended Duty Options

Features:

- Available for 120vac and 230vac models
- Replaces standard on/off motor and control board.
- DC motor adds less heat to the interior of the enclosure.
- Compatible with most options including torque switches, cold weather kits, and timers.

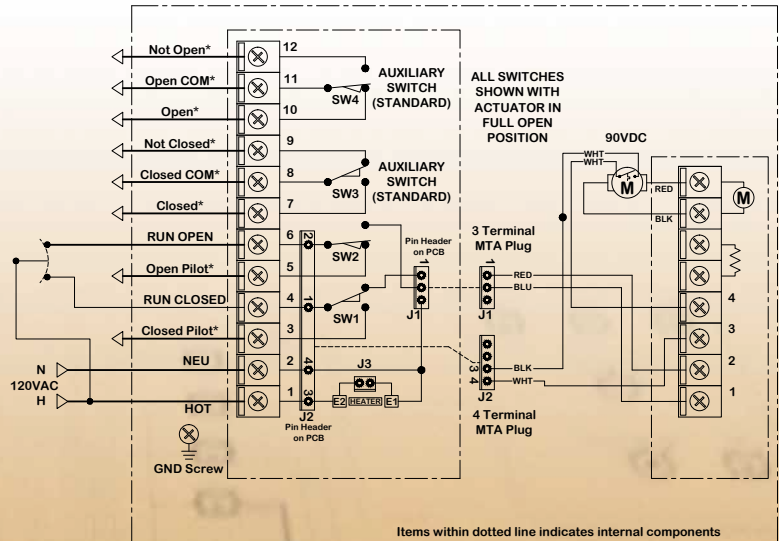
SAMPLE DIAGRAM

Refer to the proper IOM for your actuator for the correct wiring diagram or visit www.promationei.com.

Not all options are available for all models or in conjunction with other options. Call ProMation for more information.



Extended Duty Control Board supplies power and control to the 90vdc motor.



Wiring diagram for P2 actuator with Extended Duty Motor.

For Product Family	Control Type:	Actuator Voltage	Duty Cycle	Order Information
P2/3 120/230	On/Off/Jog	120vac, 230vac	75%	P2~3 120/230N4-ED
P4/5/6 120/230	On/Off/Jog	120vac, 230vac	75%	P4~6 120/230N4-ED
P7/8 120/230	On/Off/Jog	120vac, 230vac	75%	P7~8 120/230N4-ED
P9-12 120/230	On/Off/Jog	120vac, 230vac	50%	P9~12 120/230N4-ED
P13 120/230	On/Off/Jog	120vac, 230vac	50%	P13 120/230N4-ED



PROMATION ENGINEERING
Precision Actuation for Industry

16138 Flight Path Drive
Brooksville, FL 34604
Phone (352) 544-8436 Fax (352) 544-8439
email: sales@promationei.com



Use your smart phone barcode scanner app here.