



# PROMATION ENGINEERING

*Precision Actuation for Industry*

## Installation and Operation Manual

**This IOM is for the following  
ProMation Engineering Products:**

**ULC-LVN7  
ULC-HVN7  
ULC-LVN7-EPBL  
ULC-AVN7-EPBA  
ULD-LVN7  
ULD-HVN7  
ULD-LVN7-EPBL  
ULD-AVN7-EPBA**

**ULE-LVN7  
ULE-HVN7  
ULE-LVN7-EPBL  
ULE-AVN7-EPBA  
ULF-LVN7  
ULF-HVN7  
ULF-LVN7-EPBL  
ULF-AVN7-EPBA**

**These products are certified for use in the following  
hazardous locations:**

**Class I, Division 2, Groups A, B, C, D**

**These products require procedures and equipment  
rated for installation in those areas.**



## Precision Actuation for Industry

# Field Manual U-Series

**On/Off/Jog, Proportional, Modbus,  
RO/RC, Dual Acting or Multiturn  
ISO5211 F07 8P22**



Specifications	ULC		ULD		ULE		ULF	
Torque "lb/Nm	600"lbs/68Nm		1200"lbs/136Nm		2500"lbs/282Nm		5000"lbs/565Nm	
Supply Voltage	24vac/ 24vdc	100 - 240vac	24vac/ 24vdc	100 - 240vac	24vac/ 24vdc	100 - 240vac	24vac/ 24vdc	100 - 240vac
Max Run Current	3.3A	0.65A	3.3A	0.65A	3.3A	0.65A	3.3A	0.65A
Standby Current Draw	0.47A	0.14A	0.47A	0.14A	0.47A	0.14A	0.47A	0.14A
Motor	Fully Enclosed Stepper Motor							
Runtime (90°)	3-10 sec		7-20 sec		12-36 sec		27-85 sec	
Duty Cycle	100%							
Motor Starts	6000 per hour							
Weight (lbs/kg)	26 / 11.8		26 / 11.8		27 / 12.3		28 /12.7	
Mechanical Connections	ISO5211 F07 F10							
Electrical Entry	1/2" NPT							
Line Terminations	12-16ga							
Environmental Rating	Hazardous Location Class 1 Division II Groups A, B, C, D - NEMA 4							
Control (Field Selectable)	2 wire On/Off/Jog, Single wire On/Off, Three Position, Proportional, MODBUS RTU/TCP							
Loss of Power	Field Programmable Motor Drive to Safe Position							
Actuator Case Material	Aluminum Alloy, Powder coated							
Multiturn	Multiturn Capability							
Ambient Temperature Operating Range	-40°F to +140°F -40°C to +60°C							

# Table of Contents

<b>1. U-Series Introduction.....4</b>	
1.1. The Actuators & Module Options .....4	
<b>2. Product Nomenclature.....5</b>	
<b>3. Mechanical Overview.....5</b>	
3.1. Specifications .....5	
3.2. Mechanical Drawing.....5	
<b>4. Wiring Diagram.....6</b>	
<b>5. Interface, Home, and Diagnostic Screens .....7</b>	
5.1. Control Port/Connection Reference.....7	
5.2. Control Port/Connection Reference.....8	
5.1. MAIN Screen Elements.....9	
5.2. Main Screen .....9	
5.3. Super Cap Voltage Screen .....10	
5.4. Diagnostics 2 Screen .....10	
5.5. Diagnostics 3 Screen .....10	
5.6. Diagnostics 4 Screen .....10	
5.7. Diagnostics 5 Screen .....10	
<b>6. Standard Operational Modes &amp; Wiring .....11</b>	
6.1. Manual Mode.....11	
6.2. Auto Mode: 1-Wire Control Signal .....11	
6.3. Auto Mode: 2-Wire Control Signal .....12	
6.4. Auto Mode: 4-20mA Signal Control.....13	
6.5. Auto Mode: MODBUS RTU.....14	
6.6. Auto Mode: MODBUS TCP .....15	
6.7. Auto Mode: On-Off .....16	
6.8. Override Mode.....17	
6.9. Status Relay Wiring .....18	
<b>7. Initial Setup / End Point Calibration .....19</b>	
7.1. Initial Setup .....19	
7.2. Basic End Point Calibration .....19	
7.3. Automatic End Point Calibration .....19	
7.4. Failsafe Setup .....19	
<b>8. Advanced Configuration .....20</b>	
8.1. Advanced Configuration Access .....20	
8.2. Menu Navigation Button Reference.....20	
8.3. Advanced Configuration Menu Map.....21	
8.4. Position Setup .....22	
8.4.1. Position Setup Screen.....22	
8.4.2. Failsafe Setup Screen.....22	
8.4.3. Speed Setup Screen.....22	
8.4.4. Misc Screen .....22	
8.5. 4-20mA [MA] Setup .....23	
8.5.1. 4-20mA Control Calibration Screen .....23	
8.5.2. Output DAC Calibration Screen .....23	
8.5.3. 4-20mA ADC Calibration Screen.....23	
8.5.4. J2 Format Screen .....24	
8.6. Power Management.....25	
8.6.1. Motor Screen.....25	
8.6.2. Controls Screen .....25	
8.6.3. Supercap Charge Screen.....25	
8.7. OPEN/CLOSE Setup.....26	
8.7.1. 1-Wire Setup Screen .....26	
8.7.2. 2-Wire Setup Screen .....26	
8.7.3. ON-OFF Setup Screen .....26	
8.7.4. OC Timer Control Setup Screen .....27	
8.7.5. OC Input Delay Setup Screen.....27	
8.8. MODBUS Setup .....28	
8.8.1. MODBUS RTU Setup Screen .....28	
8.8.2. MODBUS TCP Screen .....28	
8.8.3. MODBUS Opt Setup Screen .....28	
8.8.4. MODBUS Register Map .....29	
8.9. Status Relay Setup .....30	
8.9.1. Error Status Relay Setup Screen .....30	
8.9.2. Close Status Relay Setup Screen .....30	
8.9.3. Open Status Relay Setup Screen .....30	
8.10. Misc Setup .....31	
8.10.1. EMI Noise Filters Screen .....31	
8.10.2. Security Screen .....31	
8.10.3. Units Screen .....31	
8.11. Factory Setup .....32	
8.11.1. Restore Defaults Screen .....32	
8.11.2. Keypad Test Screen.....32	
8.11.3. 4-20 Loopback Test Screen.....32	
8.11.4. Mac Address Screen .....32	
<b>9. Manual Override Handle Option .....33</b>	
<b>10. Controller Fault Codes .....34</b>	
10.1. Error fault codes .....34	
<b>11. Troubleshooting .....35</b>	
11.1. General Issues.....35	
11.2. J1 OPEN/CLOSE Issues.....35	
11.3. 4-20mA/0-10VDC Issues .....36	
11.4. MODBUS Issues.....36	

# 1. U-Series Introduction

The UL actuators have ISO5211 F07 and F10 mount patterns valves with a torque output from 600 to 5000 in-lbs (68 to 585 Nm).

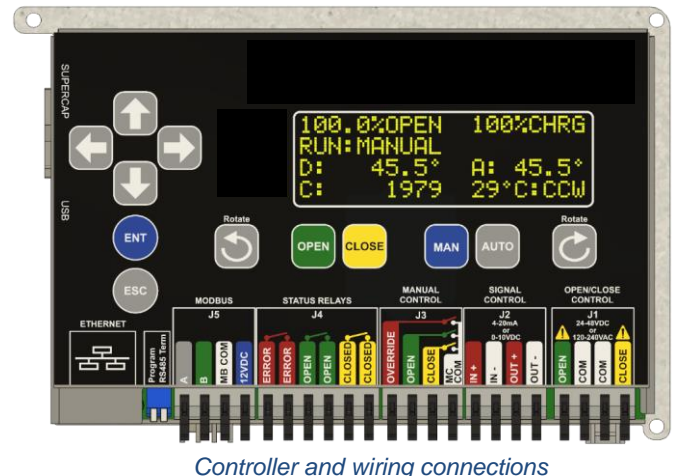
The U Series actuators are available for power input of 24VAC, 24VDC, or a universal 24VDC & 100-240VAC to allow stocking of a single supply.

The U Series actuators are offered with an optional supercapacitor backup for operation to a failsafe position upon loss of power (-EPBA/L option). The failsafe option provides sufficient power to move the actuator 90° to the designated failsafe position.

USeries Actuators with supercapacitors must be powered and actively moving the motor for at least 60 seconds for the module to charge.

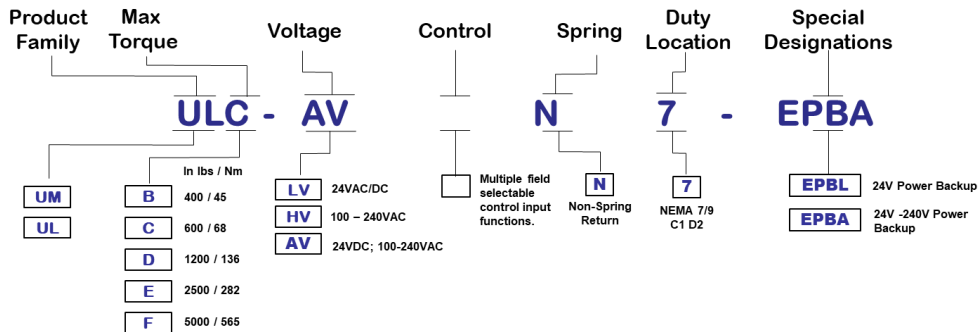
The U Series actuators are equipped with numerous control platforms all in one convenient package. On/Off/Jog, single wire, modulating, Modbus control inputs are all accepted by the U Series actuators. The controller can easily incorporate local control stations and other ancillary support equipment. The end of travel positions can be set at any rotational angle, including multiturn.

## 1.1. The Actuators & Module Options





## 2. Product Nomenclature



## 3. Mechanical Overview

### 3.1.Specifications

- Cover Bolts: Four (4) ¼-20 18-8 Stainless Screws; 15 in-lbs of torque
- F07 Valve Mounting: Four(4) M8 x 1.25 tapped holes; torque to 160 in-lbs.
- F10 Valve Mounting: Four (4) M10 x 1.5 tapped holes; torque to 300 in-lbs.

Rotation is from looking down at actuator.

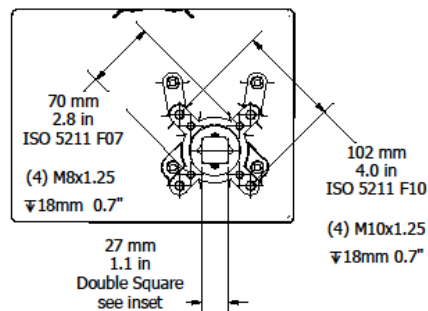
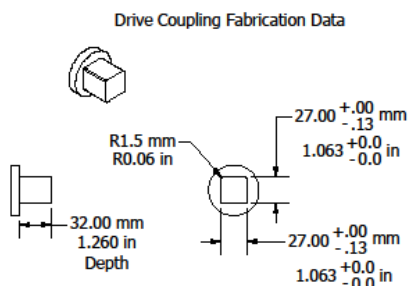
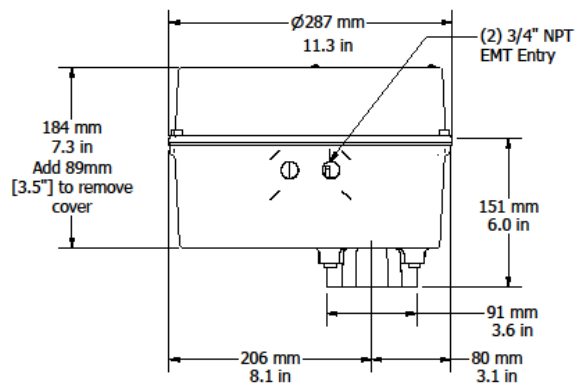
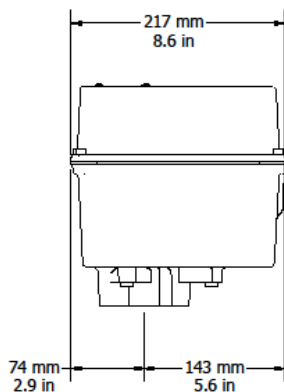
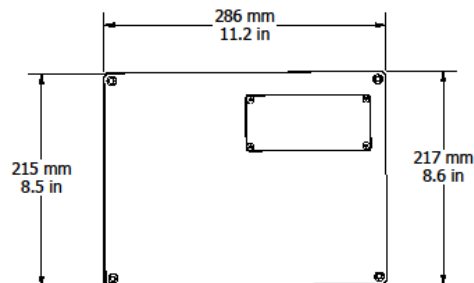
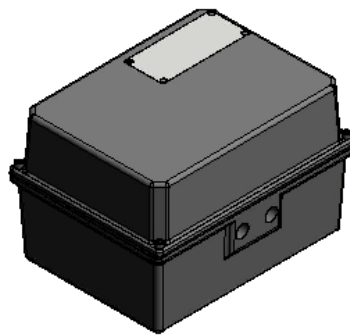
Clockwise



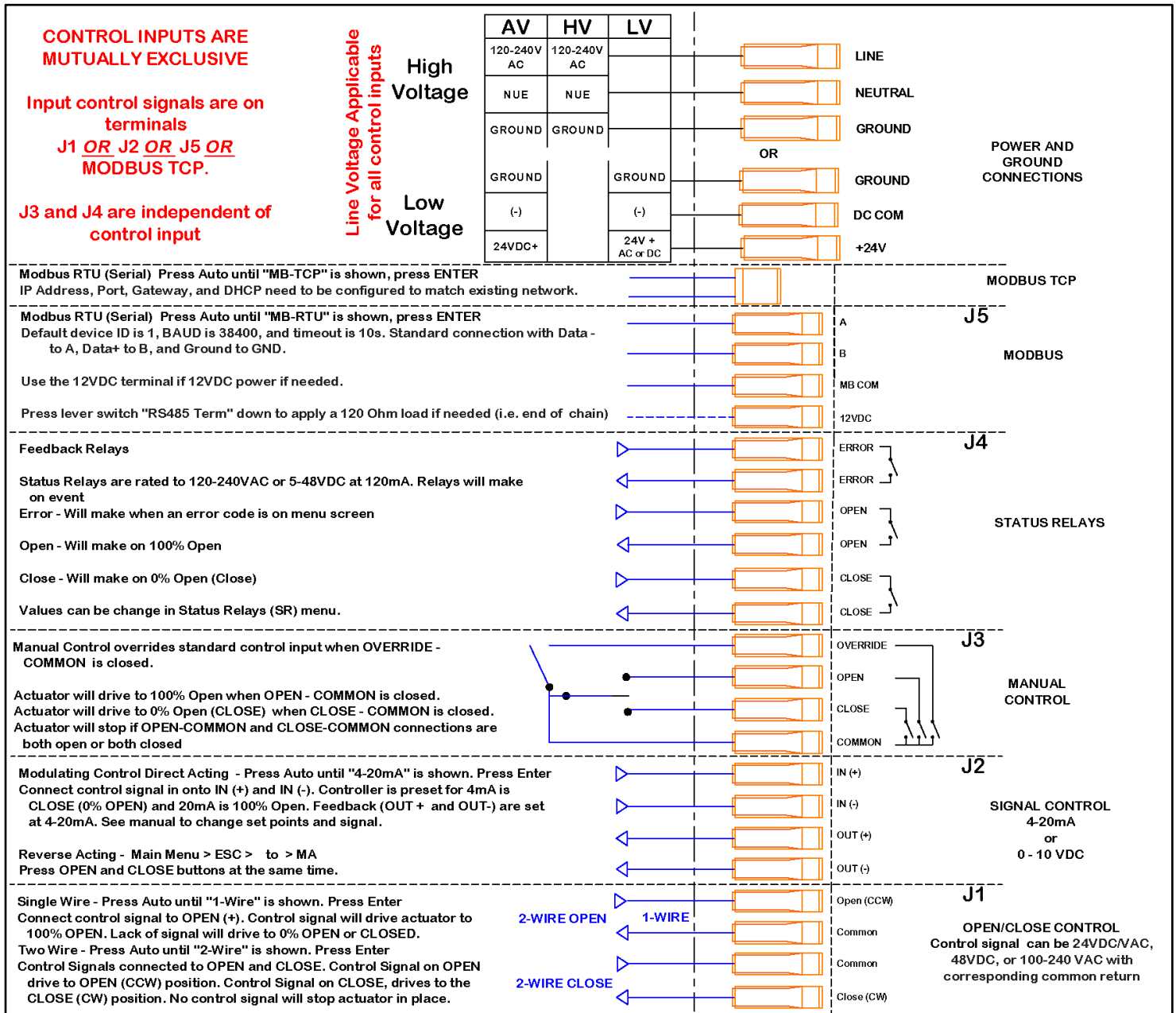
Counterclockwise



### 3.2.Mechanical Drawing

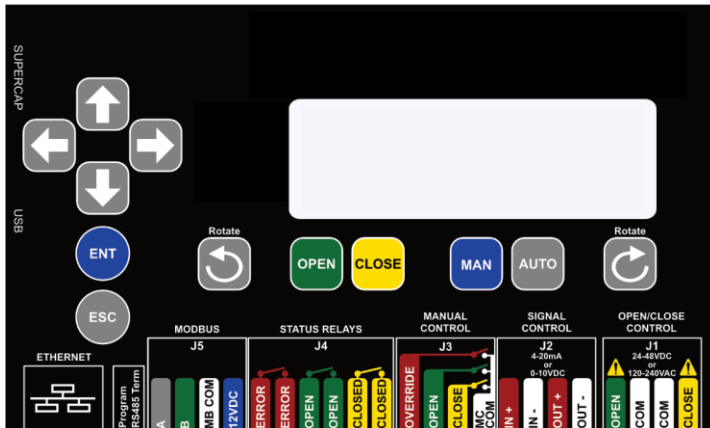


## 4. Wiring Diagram

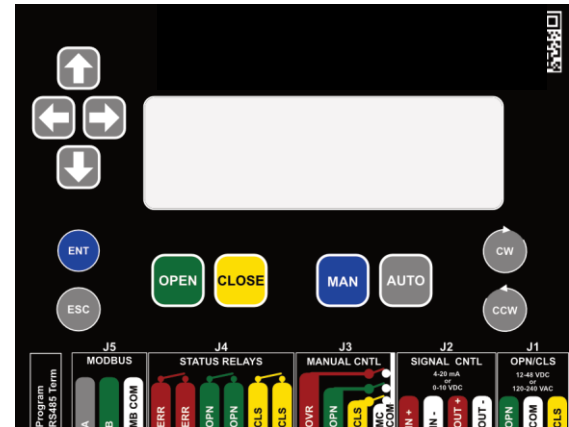


## 5. Interface, Home, and Diagnostic Screens

### 5.1. Control Port/Connection Reference



LMr Module Keypad



UM Module Keypad

Buttons	
	Use to navigate menus and set values
	Store Values/Confirm
	Cancel Entry/Back out of Menu
	During position calibration, press to set direction valve moves to open when in settings
	Manual Mode
	Hold or press to move in the direction of calibrated open position
	Hold or press to move in the direction of calibrated closed position
	Cycle between Automatic Modes (press  once proper mode selected)
Button Combinations	
	From Main Screen, enter Calibration Mode
	In manual mode, move valve to 100% open
	In manual mode, move valve to 0% open
	On 4-20mA Calibration Screen, clear OPEN value
	On 4-20mA Calibration Screen, clear CLOSE value

## 5.2.Control Port/Connection Reference



**Acceptable Wire Gauge Sizes for All Wire-to-PCB terminals:** 14-28 AWG Input. Size wire appropriately for length of run.

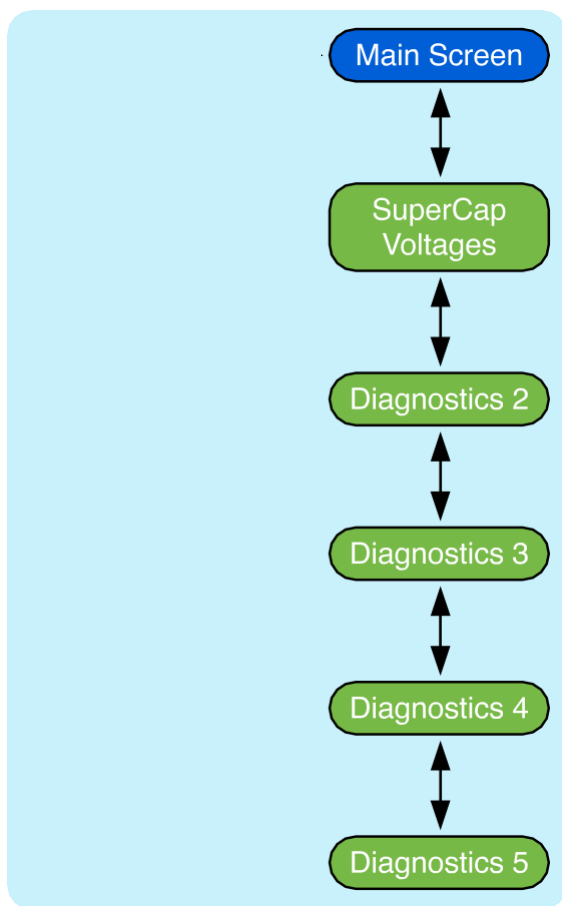
Port & Functionality	Port Rating	Pin	Pin Description
<b>J1</b> - Open/Close Control: offers three modes of operation. For more detail go to Open/ Close Mode	24-48 VDC  120-240 VAC  1A max	1	<b>OPEN:</b> +120 VAC Signal applied when valve needs to move to OPEN position
		2,3	<b>COMMON:</b> 120 VAC Neutral
		4	<b>CLOSED:</b> +120 VAC Signal applied when valve needs to move to CLOSED position
<b>J2</b> - Signal Control: allows valve positioning using 4-20mA or 0-10 VDC control signal.	IN+ 200V 1A max OUT+ 30V 0.2A max protection	1	<b>IN +:</b> +4-20mA or 0-10VDC control signal
		2	<b>IN -:</b> -4-20mA or 0-10VDC control signal
		3	<b>OUT +:</b> +4-20mA position feedback signal
		4	<b>OUT -:</b> -4-20mA position feedback signal
<b>J3</b> - Manual Control: Use external Switch or Relay to short the appropriate command signal to MC COM. For example, to OPEN the valve, short OPEN to MC COM.  If OVERRIDE is shorted to MC COM, then OPEN/CLOSE buttons may be used to force valve into that position.	N/A - Override , Open, and Close should be tied to MC COM using dry contacts	1	OVERRIDE
		2	OPEN
		3	CLOSE
		4	MC COM
<b>J4</b> - Status Relays: OPEN/CLOSED relays are Make on Event. They remain open until OPEN/CLOSED position is reached.  ERROR status relay is Break on Event. It will remain closed until error.	Up to 350V 120mA max	1, 2	ERROR
		3, 4	OPEN
		5, 6	CLOSED
<b>J5</b> - MODBUS	N/A	1	<b>A</b> - MODBUS Data ( - )
		2	<b>B</b> - MODBUS Data ( + )
		3	<b>MB COM</b> - Isolated common/ground for MODBUS
		4	<b>12 VDC</b> - Output to power MODBUS accessory if needed
PWR	60 VDC  15A max	1	+48 VDC
		2	-48 VDC RETURN
<b>Ethernet</b> - MODBUS TCP Communication		N/A	N/A
MOTOR	N/A Output only	1	Stepper S1A Connection
		2	Stepper S1B Connection
		3	Stepper S2A Connection
		4	Stepper S2B Connection
<b>USB</b> - Used to update controller firmware	N/A	N/A	N/A
SUPER CAP	N/A	1	SCBOOT - SuperCap Boot Status
		2	SCRST - SuperCap Reset
		3	SCTX - Data Transmitted to SuperCap
		4	SCRX - Data Received from SuperCap
		5	Ground



## 5.1. MAIN Screen Elements

Starting from the MAIN screen, basic status and diagnostic information about the module may be obtained by using the Up/Down or Right/Left Arrow buttons as shown to the right. The ESC button will return the unit to the home screen any time that a parameter is not being edited.

 Main Screen  
 Information Screens



## 5.2. Main Screen

1 ◀	100.0%OPEN	100%CHRG	▶ 5
2 ◀	RUN 2-WIRE	OPN CLS	▶ 6
3 ◀	C: -----	A: 90.0°	▶ 7
4 ◀	Vin: 24.1V	XXX° C:CCW	▶ 8

- 1) Percentage that valve has opened from closed position.
- 2) Current RUN mode selected.
- 3) Varies on actuator status/options selected:
  - a) EPBA/L Models and shaft not moving: Displays current cycle count of actuator.
  - b) EPBA/L Models and shaft moving: Displays current desired shaft position.
  - c) Non- EPBA/L Models: Displays current desired shaft position
  - d) The entire line (elements 3 & 7) may also be used to display faults. For a list of faults and their explanation go to the Troubleshooting section.
- 4) Varies on actuator options selected:
  - a) EPBA/L Models: Displays Voltage Input detected on Power module if the SuperCap firmware is version 3.0 or above.
  - b) Non-EPBA/L models: Displays currents cycle count of actuator.
- 5) Super Cap communication/charge status
- 6) Different RUN Mode status information is displayed here:
  - a) If RUN mode is set to 4-20mA, the current mA signal value is displayed.
  - b) If RUN mode is set to One-Wire or On-Off, then the current J1 setting will be shown. If J1 is set up to have CLOSE as the command signal, J1:CLS will be displayed if not actively receiving a command signal. Once the command signal is detected status will be J1:+CLS+
- 7) Actual position of the valve
- 8) Displays current internal temperature of the actuator as well as the direction the valve will always turn to go to the OPEN position.



Tip: For a simplified home screen layout press the UP arrow while on the home screen. Press UP again to go back to the standard view.

The view shows items 1, 2, and 5 from above.

### 5.3. Super Cap Voltage Screen


```
C7: 2.45V  C8: 2.53V
C6: 2.32V  C5: 2.41V
C3: 2.56V  C4: 2.58V
C2: 2.34V  C1: 2.55V
```

Accessed by pressing  from the MAIN screen.

Super Cap module is installed this screen shows individual charge levels for each capacitor. If Super Cap module is not installed, all levels will be shown as 0.

### 5.4. Diagnostics 2 Screen

```
DIAGNOSTICS  2/5↑↓
SC Stack 100% 19.56V
SC Charge : 120s
SC Discharge: 520s
```

Accessed by pressing  from the Super Cap screen. SC Stack: Total capacitor stack charge

**SC:** Maximum temperature recorded in SuperCap.

**SC Charge:** Most recent amount of time to fully charge

**SC Discharge:** Most recent amount of time caps were discharged

### 5.5. Diagnostics 3 Screen

```
DIAGNOSTICS  3/5↑↓
Max: 96°F  SC:114°F
Mtr Starts: --80000
MagDI: 0 0  MtrPwr:0
```

Accessed by pressing  from the Super Cap screen. SC Stack: Total capacitor stack charge

**Max:** Maximum temperature recorded in Controller.


**Mtr Starts:** Displays number of times motor has been energized.

**MagDI:** Shaft magnet diagnostics - factory use

*Note: All numeric data values are representative, actual values may vary*

### 5.6. Diagnostics 4 Screen

```
DIAGNOSTICS  4/5↑↓
ZC: 1  AR:158.5°
DT:518.5°  AT:518.5°
CO:536.3°  CC:446.3°
```

Accessed by pressing  from the Diagnostics 3 screen.

**ZC:** Times 0 point has been crossed (for multi-turn support) **AR:** Raw magnet position.

**DT:** Desired translated magnet position


**AT:** Actual translated magnet position

**CO:** Calibrated open position in degrees

**CC:** Calibrated closed position in degrees

### 5.7. Diagnostics 5 Screen

```
DIAGNOSTICS  5/5 ↑
#MS: 0  #CS: 0
      Last Stall
C:-----0  %0: 0.0
```

Accessed by pressing  from the Diagnostics 4 screen.

**#MS:** Motor Stalls

**#CS:** Cycle Stalls

**C:** Cycle number of last stall

## 6. Standard Operational Modes & Wiring

### 6.1. Manual Mode

To operate the U-Series actuator in Manual mode, simply press the MAN button on while on the home screen. While in manual mode the actuator will move when pressing either the OPEN or CLOSE buttons on the keypad. Manual Override Control using dry contacts on the J3 port will also move the actuator in this mode.

### 6.2. Auto Mode: 1-Wire Control Signal

1-Wire mode is accessed by repeatedly pressing the AUTO button on the home screen until 1-WIRE is shown. Press ENT to select that mode.

Wire mode is wired using the J1 port on the Controller. A positive control wire is inserted into either OPEN or CLOSE and the common is inserted into one of the COM ports.

A wiring example for this mode is shown below. In this example, the actuator is being wired with a 24VDC power source and using as a switchable control signal inserted into the OPEN and COMM ports of J1. The control signal may be any of the supported voltages shown.

#### Line Power Connections

**CONTROL INPUTS ARE  
MUTUALLY EXCLUSIVE**

**Input control signals are on  
terminals  
J1 OR J2 OR J5 OR  
MODBUS TCP.**

**J3 and J4 are independent of  
control input**

**Line Voltage Applicable  
for all control inputs**

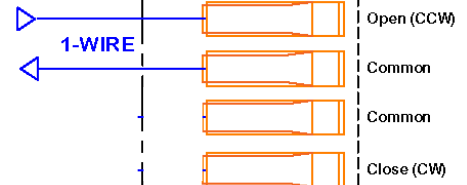
**High  
Voltage**

**Low  
Voltage**

AV	HV	LV	
120-240V AC	120-240V AC		LINE
NUE	NUE		NEUTRAL
GROUND	GROUND		GROUND
			OR
GROUND		GROUND	GROUND
(-)		(-)	DC COM
24VDC+		24V + AC or DC	+24V

**J1**

**Single Wire - Press Auto until "1-Wire" is shown. Press Enter  
Connect control signal to OPEN (+). Control signal will drive actuator to  
100% OPEN. Lack of signal will drive to 0% OPEN or CLOSED.**



Open is the default port used for this control method however 1-Wire may be configured to accept either an OPEN or a CLOSE signal. If configured as shown in the above example, the actuator will move to the 100% OPEN position as long as it is receiving a signal. Once the signal is removed it will move to 0% OPEN.

\*Any signal in the voltage range may be used for J1. Depending on the Power Supply module, either 120VAC, 24VDC, or 24VAC may be used to power the actuator.

To change whether the actuator accepts an OPEN or CLOSE signal in this mode, See [1 Wire Control Signal](#)

## 6.3.Auto Mode: 2-Wire Control Signal

Wire mode is accessed by repeatedly pressing the AUTO button on the home screen until 2-WIRE is shown. Press ENT to select that mode.

2-Wire mode is wired using the J1 port on the Controller. Positive control wires are inserted into both the OPEN and CLOSE ports of J1. One or two common wires are inserted into the COM port(s) of J1.

A wiring example for this mode is shown below. In this example the actuator is being powered with a 120VAC power source and using a switchable control signal on the J1 port. The control signal may be any of the supported voltages.

### Line Power Connections

**CONTROL INPUTS ARE  
MUTUALLY EXCLUSIVE**

**Input control signals are on  
terminals**

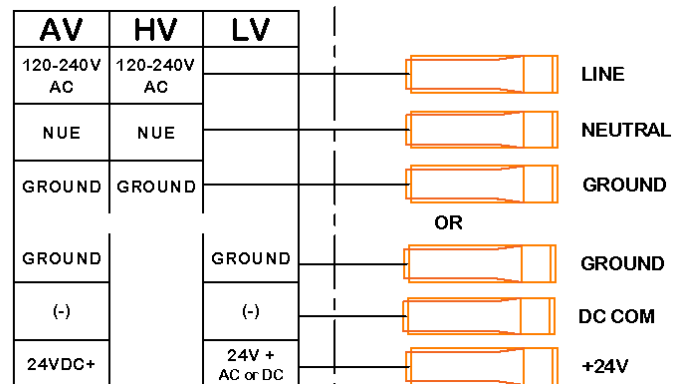
**J1 OR J2 OR J5 OR  
MODBUS TCP.**

**J3 and J4 are independent of  
control input**

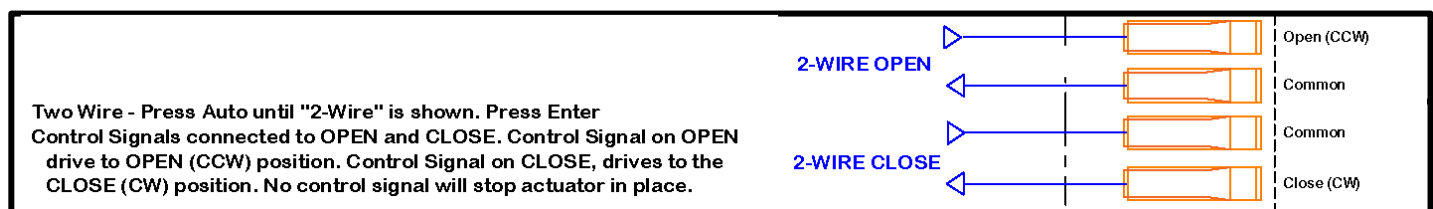
**Line Voltage Applicable  
for all control inputs**

**High  
Voltage**

**Low  
Voltage**



**J1**



By default, in 2-Wire mode, while receiving either the OPEN or CLOSE command signal, the actuator will move towards that endpoint. If both signals are removed the actuator will STAYPUT. See [2-Wire Control Signal](#)

## 6.4.Auto Mode: 4-20mA Signal Control

4-20mA mode is accessed by repeatedly pressing the AUTO button on the home screen until 4-20mA is shown. Press ENT to select that mode.

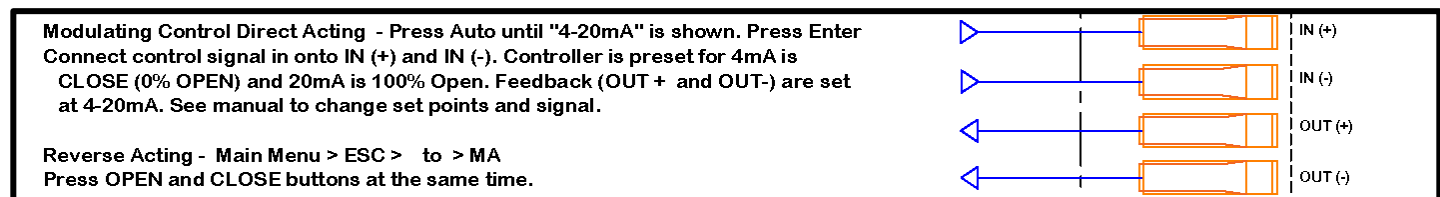
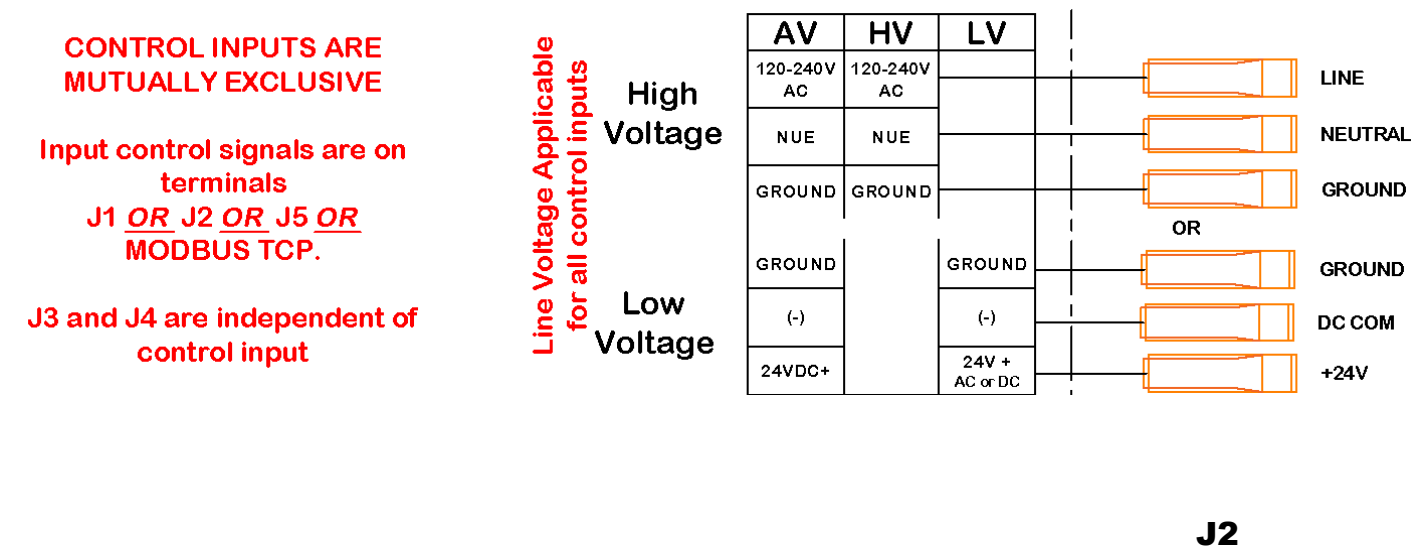
4-20mA mode is wired using J2. Insert 4-20 mA or 0-10 V control signal into IN+ terminal. Insert COM wire into IN- terminal. Valve moves to X% OPEN based on calibrated control signal values.

4-20mA powered loop feedback is also available by connecting an ammeter to the OUT+ and OUT- terminals. By default the feedback will output 4mA in the 0% OPEN position and 20mA in the 100% OPEN.

In 0-10V or 2-10V mode, the output may be configured to output the proper corresponding voltage as well, however to scale properly a 500 OHM resistor must be placed between the OUT- and OUT+ terminals.

The default wiring is shown below:

### Line Power Connections



By default, a U-Series actuator is shipped with the 16mA range where 4mA is 0% OPEN and 20mA is 100% OPEN. For more information on modulation control setup, including advanced ADC/DAC calibration; see [4-20ma \[MA\] Setup](#)



## 6.5.Auto Mode: MODBUS RTU

MODBUS RTU mode is accessed by repeatedly pressing the AUTO button on the home screen until MB-RTU is shown. Press ENT to select that mode.

Standard MODBUS operation. Default device ID is 1, BAUD is 38400, and timeout is 10s.

MODBUS RTU mode is wired using the J5 Port. Standard connection with Data - to A, Data+ to B, and Ground to GND. The 12VDC option is an output on only there to supply accessory 12VDC power if needed.

Lever switch **RS485 Term**: if pressed down will apply a 120 Ohm load if needed (i.e. end of daisy chain) Wiring example shown below.

### Line Power Connections

**CONTROL INPUTS ARE  
MUTUALLY EXCLUSIVE**

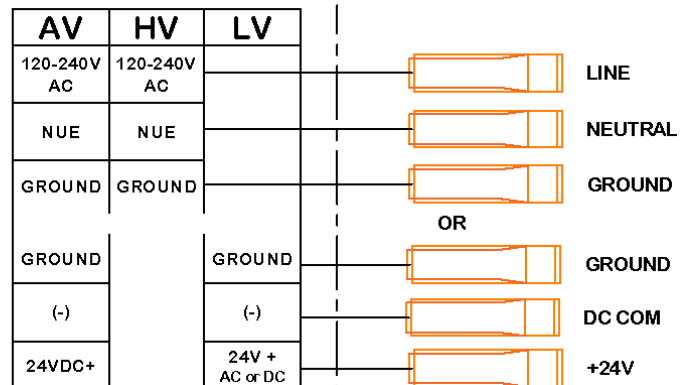
Input control signals are on  
terminals  
**J1 OR J2 OR J5 OR  
MODBUS TCP.**

**J3 and J4 are independent of  
control input**

**Line Voltage Applicable  
for all control inputs**

**High  
Voltage**

**Low  
Voltage**

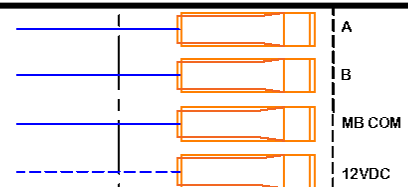


**J5**

**Modbus RTU (Serial)** Press Auto until "MB-RTU" is shown, press ENTER  
Default device ID is 1, BAUD is 38400, and timeout is 10s. Standard connection with Data -  
to A, Data+ to B, and Ground to GND.

Use the 12VDC terminal if 12VDC power is needed.

Press lever switch "RS485 Term" down to apply a 120 Ohm load if needed (i.e. end of chain)



For further information see [MODBUS RTU Setup](#)

## 6.6.Auto Mode: MODBUS TCP

MODBUS TCP mode is accessed by repeatedly pressing the AUTO button on the home screen until MB-TCP is shown. Press ENT to select that mode.

Standard MODBUS operation sent via TCP service. IP Address, Port, Gateway, and DHCP all need to be configured to match the site's existing network to properly function.

### Line Power Connections

**CONTROL INPUTS ARE  
MUTUALLY EXCLUSIVE**

**Input control signals are on  
terminals  
J1 OR J2 OR J5 OR  
MODBUS TCP.**

**J3 and J4 are independent of  
control input**

**Line Voltage Applicable  
for all control inputs**

**High  
Voltage**

**Low  
Voltage**

AV	HV	LV	
120-240V AC	120-240V AC		LINE
NUE	NUE		NEUTRAL
GROUND	GROUND		GROUND
			OR
GROUND		GROUND	GROUND
(-)		(-)	DC COM
24VDC+		24V + AC or DC	+24V

**MODBUS TCP**

Modbus RTU (Serial) Press Auto until "MB-TCP" is shown, press ENTER  
IP Address, Port, Gateway, and DHCP need to be configured to match existing network.

For further information, see [MODBUS-TCP setup](#)

## 6.7.Auto Mode: On-Off

NOTE: This option is only available if your U-Series actuator has a SuperCap module installed. Reference the device label or the device information screen if unsure if the option is installed. The Part number will end in -EPBA or -EPBL. The following product codes have the SuperCap module installed and will support power ON-OFF.

UMB-LVN7-EPBL  
UMB-AVN7-EPBA  
UMC-LVN7-EPBL  
UMC-AVN7-EPBA  
UMD-LVN7-EPBL  
UMD-AVN7-EPBA  
ULC-LVN7-EPBL

ULC-AVN7-EPBA  
ULD-LVN7-EPBL  
ULD-AVN7-EPBA  
ULE-LVN7-EPBL  
ULE-AVN7-EPBA  
ULF-LVN7-EPBL  
ULF-AVN7-EPBA

On-Off mode is accessed by repeatedly pressing the AUTO button on the home screen until ON-OFF is shown. Press ENT to select that mode.

For ON-OFF, no extra wiring is needed to the unit other than the power input onto the module. This input needs to be switchable. By default, in ON-OFF mode, the actuator will move to 100% OPEN when power is applied to the PS module. When power is turned off, the actuator will move to 0% OPEN.

## Line Power Connections

**CONTROL INPUTS ARE  
MUTUALLY EXCLUSIVE**

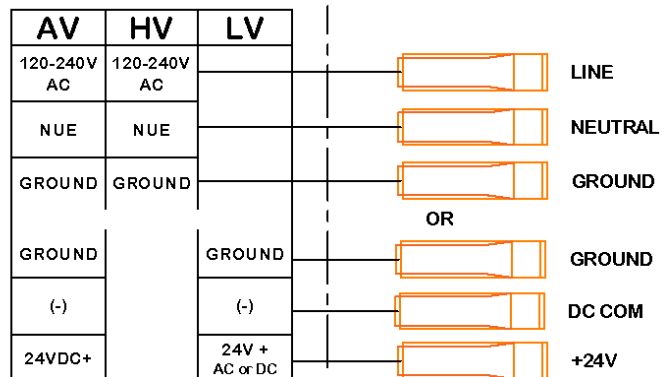
**Input control signals are on  
terminals  
J1 OR J2 OR J5 OR  
MODBUS TCP.**

**J3 and J4 are independent of  
control input**

**Line Voltage Applicable  
for all control inputs**

**High  
Voltage**

**Low  
Voltage**



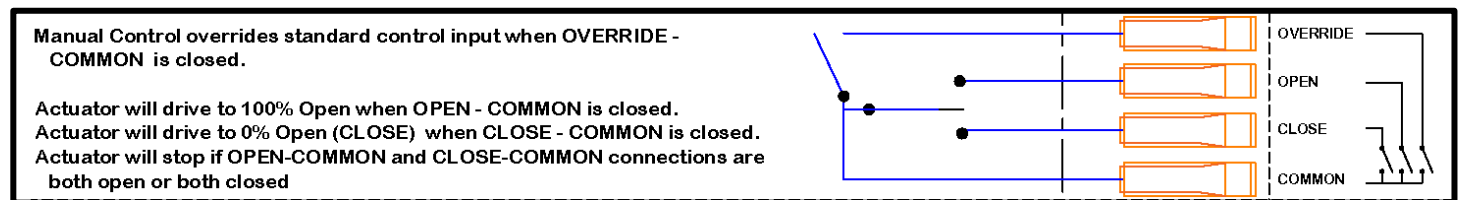
To configure the position the actuator moves to when power is received; see [ON-OFF Set up](#)

## 6.8.Override Mode

Manual Override is accomplished using the J3 Port using external relays or switches. The OVR terminal must be shorted to MC COM to enable the mode. Then CLOSE or OPEN needs to be shorted to MC COM as well to override the actuators movement in the proper direction.

This feature is used when local control is needed to override remote or normal control.

Diagram below.



Manual Control Truth Table(X = relay contact make, "Blank" = contact break)

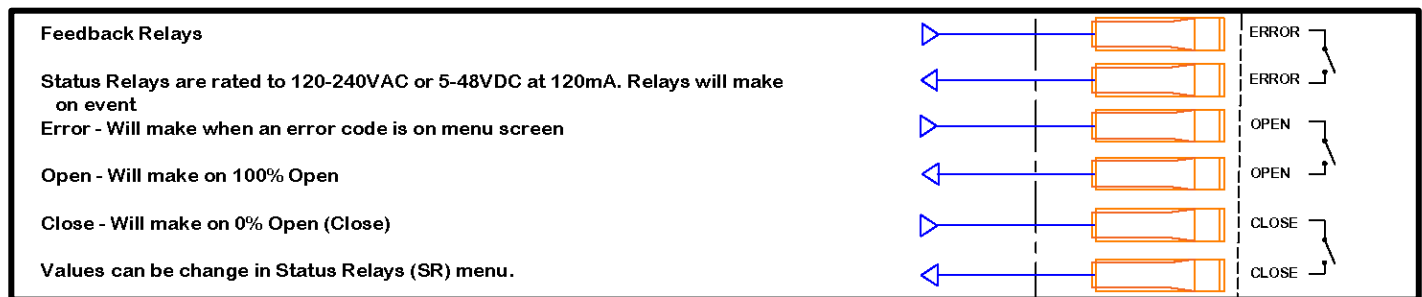
R	O	C	Function
			Unit follows control mode it is in
X			Valve stops and stays put
X	X		Valve immediately OPENS
X		X	Valve immediately CLOSES
X	X	X	Valve stops and stays put

\*Note: This mode can be used with ANY other control mode. For example, if using 4-20mA to modulate the valve's position but that modulation needs to be overridden for any reason, these inputs may be wired up during installation as well to override the 4-20mA modulation and force the valve into an OPEN or CLOSE state as needed.

## 6.9.Status Relay Wiring

The status relays are low current solid-state relays used to connect inputs to PLC for position and fault notification. By default, the relays make contact when the valve is at 0% OPEN, 100% OPEN, and if there is not currently a fault. When there is a fault, that relay will break contact. These percentages are configurable though as well as whether they are set to MAKE or BREAK.

In the example below, the Status Relays will provide a 24VDC signal to inputs on a PLC



For further Status Relay Configuration, click [Status Relay Setup.](#)



## 7. Initial Setup / End Point Calibration

### 7.1. Initial Setup

Once the U-Series actuator is properly mounted on the valve and has been verified to be wired properly, apply power.

Note: when mounting the actuator on to the valve, manually moving the valve to a known position, such as closed, will make end point calibration go that much quicker.

### 7.2. Basic End Point Calibration

- 1) Press + on the home screen. This will bring up the POSITION-SETUP screen as shown below. Note under the OPEN and CLSD both positions already show set due to default calibration during pre-shipment testing.

→PS→End Points 1/4↓  
Calibration Finished  
OPEN → CCW CLSD  
Set. 90.0° Set.

- 2) Set the direction the valve will move to the open direction. Press the proper rotation arrow button to set the open direction.

OPEN → CW  
 OPEN → CCW

- 3) Press to clear the current setting of the CLOSED end point.
- 4) If the valve is already in the closed position, then all that needs to be done is to press .
- 5) Otherwise Press and hold to move the actuator until the valve is close to the closed position. Then use short presses of the button to gently seat the valve into place. Once the valve is seated properly, press the to store the CLOSED position.
- 6) Press to clear the current setting of the OPEN endpoint.
- 7) If setting and exact 90° span, press to automatically add 90° to the current closed position. Otherwise press and hold to move the actuator until the valve is properly seated. Once the valve is seated properly, press the button to store the OPEN position.

Once both end points are set, the actuator is able to OPEN/CLOSE based on user input.

### 7.3. Automatic End Point Calibration

Note: This method can only be used with a valve that has hard stops at the end points. Those stops are what are used to sense the end points.

Press + on the home screen. This will bring up the POSITION-SETUP screen as shown in the previous section.

- 1) Set the direction the valve will move to get to the open position as explained in the previous section.
- 2) Press to clear the current setting of the CLOSED end point.
- 3) Hold the button until a countdown appears in the upper portion of the screen. The actuator will automatically start moving in the closed direction until it senses the hard stop at the end of the travel.
- 4) Press to clear the current setting of the OPEN endpoint.
- 5) Hold the button until a countdown appears in the upper portion of the screen. The actuator will automatically start moving in the open direction until it senses the hard stop at the end of the travel.

### 7.4. Failsafe Setup

By default, both Failsafe positions for a U-Series actuator is the CLOSE position. If a different position is desired, then follow the below steps to change the setting.

- 1) From the **PS→End Points** screen, press .
- 2) Press to enter edit mode. Use to cycle between the different Cntrl Loss options. The options are as follows:

- a) **CLOSE** - Default option - actuator moves to the calibrated CLOSED end point.
- b) **OPEN** - actuator moves to the calibrated OPEN end point
- c) **PERCENT OPEN** - actuator moves valve to X% open of the calibrated open position. For this option,

after it is selected, the needs to be pressed to move to the numeric entry line to change the value.

- d) **STAYPUT** - The valve stays in the exact position it was in at the time of failure.
- 3) Press the button to go to Power Loss options and choose appropriate Power Loss mode.
  - 4) Press to save the option once satisfied with your selection.

## 8. Advanced Configuration

### 8.1. Advanced Configuration Access

Just like performing the End Point Calibration, all advanced configuration on the actuator may be accessed from the menu when **ESC + →** are pressed at the same time from the home screen. These screens should only be accessed by a trained technician. Damage may occur to the actuator or other equipment if improperly set up.

**\*\*Note:** Where applicable the mock screens in the following sections are all shown with the **DEFAULT** values in the controller when the actuator is shipped from the factory unless a different option is requested upon order such as **Power Mode**. If a setting is changed and you aren't sure what it was; refer to the mock screens

### 8.2. Menu Navigation Button Reference

Buttons	
	Move up and down the menus   Change value on parameter screens
in menu	Back out of Sub-Menu into Main Menu
on parameter screen	Go to previous value to edit
in menu	Enter Sub-Menu from Main Menu
on parameter screen	Move to next value on parameter screen
	Select Menu item   Store Values/Confirm
	Cancel Entry/Back out of Menu
Button Combinations	
	From Main Screen, enter Calibration Mode

Examples:

Position Setup is highlighted

```
Menu          1/3↑↓
1→Position  Setup [PS]
2 4-20mA    Setup [MA]
3 Power      Manage [PM]
```

Or pressed

Position Setup sub-menu entered

```
→Position Setup 1/2↑↓
1→End    Points
2 Failsafe
3 Speed
```

On End Point Setup Screen

```
→PS→End Points 1/4 ↓
Calibration Finished
OPEN → CCW CLSD
Set. 90.0° Set.
```

Or pressed

Position Setup main menu entered

```
→PositionSetup 1/2↑↓
1→End    Points
2 Failsafe
3 Speed
```

## 8.3. Advanced Configuration Menu Map

Main Menu	Sub-Menu	Description
→ <b>PS</b> → <b>End Points</b> will always be the first screen seen when pressing  + 		
1. <a href="#">Position Setup [PS]</a>	1. End Points	Set Open & Close End Points as well as Open Direction
	2. Failsafe	Set POWER & SIGNAL Loss <b>Failsafe Positions</b>
	3. Speed	Set <b>MIN/MAX Speed</b> and Acceleration Span
	4. Misc Open Direction, Band Gap, Multi-Turn Speed Boost	
2. <a href="#">4-20 Setup [MA]</a>	1. Cal Control Input	Calibrate Open/Close Modulated Signal Position (4-20mA/0-10VDC)
	2. Cal Output DAC	Calibrate Feedback DAC Levels
	3. Cal Input ADC	Calibrate Input ADC Levels
	4. J2 Signal Format	Set 4-20mA, 0-10VDC, or 2-10VDC Format
3. <a href="#">Power Manage [PM]</a>	1. Motor	Power Mode (Temp Control/Power Save/Holding Torque)
	2. Controls	Control power to circuits based on control mode
	3. SuperCap	Charge Rate
4. <a href="#">OPN/CLS Setup [OC]</a>	1. 1-Wire	J1 Port used (OPN or CLS)
	2. 2-Wire	J1 Signal Mode (Continuous vs One-Shot)
	3. ON/OFF	Actuator action when power is applied
	4. Timer Override	Use timer to override J1 Signal
	5. Input Delay	Delay actuator action after signal applied
5. <a href="#">MODBUS Setup [MB]</a>	1. RTU Serial	Device ID, Baud Rate, Timeout settings
	2. TCP IP	IP Address, Gateway, Subnet settings
	3. TCP MISC	Port Number & DHCP
6. <a href="#">Status Relays [SR]</a>	1. Error Mode, Trip Delay, Trip on EPBA/L Service	
	2. Open	Mode, Trip Level, Trip Delay
	3. Closed	Mode, Trip Level, Trip Delay
7. <a href="#">Misc Setup [MS]</a>	1. EMI Noise Filters	Digital Input Level, Keypad Level, Keypad Lock
	2. Units Temperature Units	
	3. Security	Menu Lockout
8. WiFi Setup [WF] Future Development		
9. <a href="#">Factory Setup [FS]</a>	1. Restore Defaults	Restore System or Clear Calibration Points
	2. Keypad Test	Test all keypad buttons
	3. 4-20 Loopback Test	Test 4-20 Input/Output functionality
	4. MAC Address/Lot Number	Internal MAC Address & Lot number

## 8.4. Position Setup

Refer to [Section 8](#) on the steps needed to take to access this configuration tree.

### 8.4.1. Position Setup Screen

As shown in section 5.2, this screen is used to calibrate the end points of the U-Series Actuator. If calibration has been completed, then the screen should appear similar to below:

```

→PS→End Points  1/4 ↓
Calibration      Finished
OPEN → CCW      CLSD
Set.   90.0°     Set.
  
```

The 90.0° in this example shows that the range set between the two end points is 90.0°. Depending on the range of your setup, that number will vary. However, both to the left and right of that middle range the words "Set." confirm that those end points have been set along with the "Calibration Finished"

If the unit has had the calibration cleared from the Restore Defaults Screen, then the screen will appear as below and a calibration will have to be done in order for the unit to function. Calibration instructions are shown in Section 5.2

```

→PS→End Points  1/4 ↓
Needs           Calibration
OPEN → CCW      CLSD
           0.0°
  
```

### 8.4.2. Failsafe Setup Screen

As shown in section 7.3, this screen is used to set the Failsafe mode of the actuator during power or signal loss.

```

→PS→Failsafe    2/4 ↓
Cntrl           CLOSE
Loss: Power     CLOSE
  
```

Press the ENT button to enter edit mode. Use UP/DOWN Arrows to change value. If using Percent Open, use LEFT/RIGHT Arrows when selected to move to the next field.

Press ENT again to set FAILSAFE mode when proper selection is made.





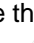
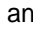

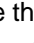
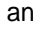

- **CLOSE** - Valve moves to closed position.
- **OPEN** - Valve moves to open position.
- **PERCENT OPEN** - Valve moves to percent open.
- **STAYPUT** - Valve stays where it is.

### 8.4.3. Speed Setup Screen

By default, the U-Series Actuator is set to 70% speed. Use this screen to change the speed if a faster or slower speed is needed. The Acc/Decel span is the number of degrees the actuator will slow or speed up before achieving the set speed or coming to a stop.

```

→PS→Speed        3/4 ↑↓
Max Speed  OPN : 70%
Max Speed  CLS : 70%
Acc/Decel  Span: 5°
  
```

- 1) Press  to enable editing.
- 2) The Max Speed OPN value will start blinking. Use the  and  buttons to adjust the value in increments of 10% until desired speed is achieved.
- 3) Press  to edit the Max Speed CLS value. Use the  and  to adjust the value.
- 4) Press  to edit the Acc/Decel Span value. Use the  and  to adjust the value.
- 5) Press  to store the values.

### 8.4.4. Misc Screen

The Range Control screen is the last screen in the Position Setup tree. This screen may be used to set the Open direction to Clockwise (CW) or Counter-Clockwise (CCW) as you're able to do using the shortcut buttons on the Position Setup Screen.

```

→PS→Misc        2/4 ↑
Open Direction:  CCW
Band Gap  [+/-]: 0.2°
Boost MT Speed:  OFF
  
```

This screen also allows for editing of the Band Gap or Hysteresis of the drive circuit. By default if the signal changes the position by more than 0.2° the shaft will move. That may be changed if less accuracy is needed, in high vibration environments, or if a control signal is exceptionally noisy.

If Boost MT Speed is enabled, then if the range is greater than 360°, the speed will be boosted by 20% to improve Multi-Turn open/close time.



Press the ENT button to enter edit mode. Use UP/DOWN arrows to change the value on the line that is blinking. Use the LEFT/RIGHT arrows to move to the next line and repeat the first direction. Press ENT again to set the values.

## 8.5. 4-20mA [MA] Setup

Refer to [Section 8](#) on the steps needed to take to access this configuration tree

### 8.5.1. 4-20mA Control Calibration Screen

This screen allows you to calibrate the mA values that determine the %OPEN that the actuator will move the valve. By default, it is a 16mA range with 4mA being the CLOSED position and 20mA being the 100% OPEN position.

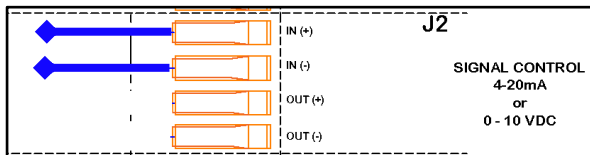
To simply swap the values so that 4mA is OPEN and 20mA is closed; Press  +  at the same time.

Default values are as shown below:

```





→MA→CTRL Input 1/4 ↓
Cal Completed
0:mA | 0.00 | C:mA
20.00 | 16.00 | 4.00
  
```

To set new OPEN/CLOSE calibration values, an external control signal is necessary. Connect the signal wires into the ports as shown:




#### Calibration:

To change OPEN/CLOSE signal values:

- 1) Apply control signal to IN + and IN - on J2.
- 2) Press  +  or  +  to clear the set point that needs to be updated.
- 3) Verify the signal on the third line of the screen matches the signal being applied.

```

0:mA | 0.00 | C:mA
  
```

- 1) Press  or  to store the value in that end point.

*Note: these are representative values, actual values may vary.*

### 8.5.2. Output DAC Calibration Screen









The DAC Calibration screen is to calibrate the Analog Output from the controller (J2 OUT+ and OUT-).

```

→MA→Output DAC 2/4↑↓
DAC Value 4mA: 646
DAC Value 20mA: 3207
DAC 4-20 Span = 2561
  
```

By default, the DAC output will output 4mA when in the CLOSED position and 20.10mA when in the OPEN position.

#### Calibration:









- 1) Press  to enable the screen.
- 2) Hook up meter to read the current output to J2 OUT+ and OUT-
- 3) Press  to start calibration. The 4mA value will start blinking. Use the  and  buttons to adjust the value to give the desired output.
- 4) Press  to edit the 20mA value. Again, use the  and  to adjust the value. When satisfied with the output of both press  to store them.

### 8.5.3. 4-20mA ADC Calibration Screen

The ADC Calibration screen is to calibrate the Analog Input to the controller (J2 IN+ and IN-). These settings are factory set using a calibrated 4-20mA loop generator. Be advised changing these values may cause the unit to not properly function.

```

→MA→Input ADC 3/4↑↓
ADC 4.00mA Val:732
ADC 20.00mA Val:3657
Act= 20.00mA Rng=2925
  
```

- 1) Press  to enable the screen.
- 2) Hook up 4-20mA signal generator to feed the input to J2 IN+ and IN-
- 3) Press  to start calibration. The 4mA value will start blinking. Apply 4mA signal and use the  and  buttons to adjust the **Act** value until it matches the value of the signal generator.
- 4) Press  to edit the 20mA value. Again, use the  and  to adjust the value after applying the 20mA signal. When satisfied with the output of both press  to store them.



### 8.5.4. J2 Format Screen

Both U-Series controllers are capable of accepting 4-20mA, 2-10VDC, and 0-10VDC modulated control inputs. The feedback also supports all modes.

The Output may be flipped if desired as well. This would mean that if a 20mA signal is supplied, instead of 20mA being output, 4mA would be output. 4mA input would give 20mA feedback











\*Note: In the 0-10VDC input, the lowest that can be recognized by either controller is roughly 0.5VDC due to the protection diode voltage drop on the front end of the circuit

If using VDC feedback, a 500 Ohm resistor load must be placed across the output terminals to properly scale the voltage.



```

MA→J2 Format  4/4 ↑
Input Type:   4-20mA
Output Type:  4-20mA
Output Flip:   OFF
  
```

- 1) Press  to enable editing.
- 2) The Input Type value will start blinking. Use the  and  buttons to choose the proper input format.
- 3) Press  to edit the Output Type value. Use the  and  to choose the proper output format.
- 4) Press  to edit the Output Flip value. Use the  and  to turn it on or off.
- 5) Press  to store the values.

## 8.6. Power Management





Refer to [Section 8](#) on the steps needed to take to access this configuration tree.

### 8.6.1. Motor Screen

Power management controls the conditions that the actuator will keep motor torque enabled. If current draw is an issue, this is one setting that will help lower the standby power of the actuator.

```

→PM→Motor      1/3 ↓
TEMP CONTROL MODE
** Holding Torque **
* High Ambient OFF *
  
```

Press the  button to enter edit mode. Use   Arrowsto change the field's value. Press  again to save settings.

- **POWER SAVE MODE** - After moving to set position, motor holding torque will be turned off. Helps lower power usage in solar applications and other low power environments.
- **TEMP CONTROL MODE** - Motor holding torque will be turned off in high ambient temperature environments. Helps to keep temperature down to protect electronics and lower condensation in high temperature environments.
- **HOLDING TORQUE MODE** - Motor holding torque will always be enabled regardless of environment.

### 8.6.2. Controls Screen

Allows for lower power draw to be lowered if conditions require it.

```





→PM→Control      2/3 ↑↓
  
```

### 8.6.3. Supercap Charge Screen

This screen allows the user to change the charge rate of the SuperCap Module. By default MAXIMUM is selected. If power draw is a worry, a reduced charge rate may be selected. This will mean that the SuperCap will charge more slowly.

```

→PM→Supercap      1/3 ↓
Charge Rate:  MAXIMUM
  
```

Press the  button to enter edit mode. Use   Arrowsto change the field's value. Press  again to save settings.

- **MAXIMUM** - SuperCap will charge at full speed until reaching 90% at which point it will go into reduced charge to finish filling the stack.
- **REDUCED** - SuperCap will charge at the reduced charge rate the entire time.

## 8.7. OPEN/CLOSE Setup





Refer to [Section 8](#) on the steps needed to take to access this configuration tree.

### 8.7.1. 1-Wire Setup Screen

For more information on how 1-Wire functions refer to Section 6.2. This screen is to set up the port that controls the functionality. The options are either OPEN or CLOSE as displayed on the J1 artwork of the keypad.

```
→OC→1-WIRE      1/5 ↓
J1 Port Used:    OPEN
```

- **OPEN** - XCTRL monitors signal input on the OPEN terminal of J1.
- **CLOSE** - XCTRL monitors signal input on the CLOSE terminal of J1.

Press the  button to enter edit mode. Use   Arrows to change the field's value. Press  again to save settings.

### 8.7.2. 2-Wire Setup Screen

For more information on how 2-Wire functions refer back to Section 4.3. This screen is to configure how the XCTRL responds to the signal inputs.

```
→OC→2-WIRE      2/5 ↑↓
J1 Signal: CONTINUOUS
Both Inputs Off
Pos: STAYPUT
```






As of firmware version 3.8.1 this screen allows for different types of control signals to be applied to the J1 port. That is set with the second line of this screen. The options for the J1 Signal type are:

```
J1 Signal: CONTINUOUS
J1 Signal: ONE-SHOT
```

1. **CONTINUOUS** - Send a continuous signal to either the OPEN or CLOSE port to hold the actuator in that position. If using this option, then a third position may be set for the actuator. If both inputs to the actuator are off, then a third position may be selected. Press the Right Arrow to access these options. The options for the third position are:

- **STAYPUT** - Valve will stop at current position.
- **CLOSE** - Valve moves to CLOSED position.
- **OPEN** - Valve moves to OPEN position.
- **FAILSAFE POSITION** - Valve moves to programmed position in FAILSAFE SETUP
- **PERCENT OPEN** - Valve moves to X percent open

2. **ONE-SHOT** - If this option is chosen, instead of sending a continuous signal to keep the actuator in the CLOSE or OPEN position, you can send a pulse or use a button push to make the actuator move into the OPEN or CLOSE position. The length of the pulse that is accepted is controlled by the DI Noise Filter covered in Section 14.

Press the  button to enter edit mode. Use   Arrows to move between the editable fields. Use   Arrows to change each field's value.





Press  again to save settings.

### 8.7.3. ON-OFF Setup Screen

For more information on how ON-OFF functions refer back to Section 4.7. This screen is to configure whether the actuator OPENS or CLOSSES when power is applied to the power supply module.

```
→OC→ON/OFF      3/5 ↑↓
When Power ON:    OPEN
```

- **OPEN** - Valve moves to OPEN position.
- **CLOSE** - Valve moves to CLOSED position.

Press the  button to enter edit mode. Use   Arrows to change the field's value. Press  again to save settings.

Continued on next page...

## 8.7.4. OC Timer Control Setup Screen

```

→OC→Timer      4/5↑
Override J1      Input:
OFF
  
```

Press the **ENT** button to enter edit mode. Use  
 ⬅ ➡ Arrows to move between the editable fields.  
 Use ⬆ ⬇ Arrows to change each field's value.

Press **ENT** again to save settings.

This screen allows for a timer to be set that will automatically override the signal input on J1. A use case for this would be if using a CONTINUOUS signal input on to the OPEN port of J1 and the operator forgets to turn the signal off. In normal cases, this could cause a spill. If this timer was enabled, then if that operator forgot to turn off the CONTINUOUS signal, then once the timer counted down to 0, the valve would automatically move to the CLOSE position preventing any spill.

In 1-WIRE mode, the overridden signal will stay latched until that signal has been turned off. When the signal is next enabled, the timer will start counting down from the programmed amount of time.

In 2-Wire mode, the overridden signal will stay latched until the other signal is applied. If overriding the OPEN, then after the timer expires the OPEN will be overridden and the valve will move to the CLOSED position. It will stay in the closed position ignoring the OPEN signal until a control signal has been applied to the CLOSE terminal on J1.

If a timer has been set it will be apparent from the home screen as the bottom line will show the following as it countdowns:

```

Auto CLOSE → 00m:55s
  
```

*\*Note it will display as Auto OPEN if overriding the CLOSE port*

And once the timer has ended, the following will be displayed until the signal has been unlatched:

```

J1 OC Override CLOSE
  
```

*\*Note it will display as Override OPEN if overriding the CLOSE port*

- **Override J1 Input** - Set to OFF or for a timer of 1 to 60 minutes in length.
- **On Time Expire** - Set whether the valve will OPEN or CLOSE once the timer has expired OC Input Delay Setup Screen

## 8.7.5. OC Input Delay Setup Screen

```

→OC→Inp Delay  5/5↑
Delay J1 Input:  0s
  
```

This screen allows for a delay to be applied to the input on the J1 port. Useful if you have a noisy control signal or if needing the valve to delay movement to match another sequence. If using two actuators using a single control wire, one could have an input applied so that it always OPEN/ CLOSE within a certain amount of time of the other actuator.

If an INPUT DELAY has been enabled, then the bottom line of the home screen will display a message any time the signal control is turned ON or OFF. This means that if a 5 second delay is set that it will affect both the OPEN and CLOSE input. The message shown on the home screen will look like this:

```

OC Input Delay → 30s
  
```

- **Delay J1 Input** - Set the input delay from 0-30 seconds.

Press the **ENT** button to enter edit mode. Use ⬆ ⬇ Arrow to change the field's value. Press **ENT** again to save settings.

## 8.8. MODBUS Setup

Refer to [Section 8](#) on the steps needed to take to access this configuration tree.

\*Note: Even if not using MODBUS to control the actuator, status information is available via the MODBUS ports with proper setup.

Protocol Defaults:

Parity - None Stop Bits - 1 Data Bits – 8






### 8.8.1. MODBUS RTU Setup Screen


This mode requires inputs in the J5 terminal block for MODBUS A(-), MODBUS B(+), MB COM (Signal Ground).

The 12VDC port is an output for any accessories that need it, but is not necessary for actuator operation. Default values are as shown below:

```

→MB→RTU Serial  1/3 ↓
Device ID       : 1
Baudrate        : 38400
COM Timeout     : 10s
  
```

Press the  button to enter edit mode. Use   Arrows to move between the editable fields. Use   Arrows to change each field's value.

Press  again to save settings.







- **Device ID** - Number from 1-255
- **Baud rate** - Standard values of 4800, 9600, 19200, 38400, 57600, or 115200
- **COM Timeout** - Amount of time before MODBUS Slave Receive Timeout Trips. Select value of 1-20 seconds or disable by selecting NONE

### 8.8.2. MODBUS TCP Screen

Standard MODBUS operation sent via TCP service.

```

→MB→TCP 2/3↑↓
sIP:192.168.10.60
sGW:192.168.10.1
sSM:0 . 0. 0.0
  
```






Press the  button to enter edit mode. Use   Arrows to move between the editable fields. Use   Arrows to change each field's value. Press  again to save settings.


- **sIP** - Static IP Address for the controller.
- **sGW** - Static Gateway Address for the controller.
- **sSM** - Subnet Mask for the controller.

### 8.8.3. MODBUS Opt Setup Screen

```

→MB→TCP Misc 3/3↑
Port: 0502
DHCP: OFF
  
```

Press the  button to enter edit mode. Use   Arrows to move between the editable fields. Use   Arrows to change each field's value.

Press  again to save settings.

- **Port** - Default port controller uses to access network
- **DHCP** - Allow the actuator to automatically grab IP address if enabled. Otherwise it will only use the static one provided.



## 8.8.4. MODBUS Register Map

Table Name	Coil/Register Numbers	Data Addresses	Type
Discrete Output Coils	1-9999	0000-270E	Read/Write
Discrete Input Coils	10001-19999	0000-270E	Read Only
Analog Input Registers	30001-39999	0000-270E	Read Only
Analog Output Holding Registers	40001-49999	0000-270E	Read/Write

Coil/ Register	Address	Size	Mode (R/W)	Data Type	Description
1	0	1	R/W	bool	OPEN/CLOSE Forced Coil output (1 = "OPEN" 0 = "CLOSE")
10001	0	1	R	bool	[Valve Fully Open] AUX1 Output Status (1 = "on", 0 = "off")
10002	1	1	R	bool	[Valve Fully Closed] AUX2 Output Status (1 = "on", 0 = "off")
10003	2	1	R	bool	Error Relay Output Status (1 = "on", 0 = "off")
10004	3	1	R	bool	FAULT: Position Calibration Needed (1 = "on", 0 = "off")
10005	4	1	R	bool	FAULT: Input 4-20mA Invalid (1 = "on", 0 = "off")
10006	5	1	R	bool	FAULT: Position Sensor (1 = "on", 0 = "off")
10007	Reserved				
10008	7	1	R	bool	FAULT: Open/Close Inputs Invalid (1 = "on", 0 = "off")
10009	8	1	R	bool	FAULT: Open/Close Interface Disconnected (1 = "on", 0 = "off")
10010	9	1	R	bool	FAULT: Motor Is Stalled (1 = "on", 0 = "off")
10011	10	1	R	bool	Advisory: Service EPBA/L Module
10012-16	11-15	5	R	bool	Reserved (0xFF)
10017	16	1	R	bool	Indicates if user is in menu or not. (1 = in menu, 0 = not in menu)
10018	17	1	R	bool	Indicates temperature units (1 = C, 0 = F)
10019	18	1	R	bool	Manual Override engaged (1 = "on", 0 = "off")
10020	19	1	R	bool	Supercap Backup Power COM Lost (1 = "on", 0 = "off")
10021	20	1	R	bool	Supercap Backup Power ON (1 = "on", 0 = "off")
10022	21	1	R	bool	Main Power Lost (1 = "on", 0 = "off")

30001	0	1	R	ushort	Current Valve Percent Open (least significant digit is tenth's place. (i.e. 237 = 23.7% open)
30002	1	1	R	ushort	Current Temperature (oC or oF based on config)(Default: oF) (e.g. 80 = 80 oF)
30003	2	1	R	ushort	Maximum Temperature (oC or oF based on config)(Default: oF) (e.g. 100 = 100oF)
30004-30005	3-4	2	R	uint	Number of Cycles (30004 == BITS[31...16], 30005 == BITS[15...0])
30010	9	1	R	uint	Last Supercap charge time (in seconds)
30011	10	1	R	uint	Last Supercap discharge time (in seconds)
30012	11	1	R	uint	Number of motor starts
30013	12	1	R	uint	Voltage in to Supercap (##.#V)
30014	13	1	R	uint	Current Operational Mode (0=Manual, 1=4-20mA, 2=2Wire, 3=1Wire, 4=ON/OFF (EPBA/Lonly), 5=MB-RTU, 6=MB-TCP)
30015-16	Reserved				
30017	16	1	R	uint	Number of Motor Stalls bits[31-16]
30018	17	1	R	uint	Number of Motor Stalls bits[15-0]
30019	18	1	R	uint	Number of Cycle Stalls bits[31-16]
30020	19	1	R	uint	Number of Cycle Stalls bits[15-0]
30021	20	1	R	uint	Cycle Count of Last Stall bits[31-16]
30022	21	1	R	uint	Cycle Count of Last Stall bits[15-0]
30023	22	1	R	uint	Percent Open of Last Stall [0-1000] = 0 – 100.0%
40001	0	1	R/W	ushort	Desired Open Position (Tenth Percent as 0 to 1000) (i.e. 496 = 49.6% open)
40002	1	1	R/W	ushort	Max Open Speed (%/10 of Max Valve Speed) (1 - 10) (Default: 7 or 70%)
40003	2	1	R/W	ushort	Max Close Speed (%/10 of Max Valve Speed) (1 - 10) (Default: 7 or 70%)
40004	3	1	R/W	ushort	Acc/Decel Span (Degree Range for Acceleration and Deceleration) (10- 100) (Default: 5)
40005	4	1	R/W	ushort	Change main screen skin. 0 for detailed, 1 for simple layout (0 - 1) (Default: 0)

## 8.9. Status Relay Setup

Refer to [Section 8](#) on the steps needed to take to access this configuration tree.

The Status Relays are made to make low-current connections to light towers or equivalent status indicators. They are rated for a maximum of 120-240VAC or 5-48VDC @ 120mA.






By default, Open/Close relays are make on event. They stay open until the Open or Closed set point is reached.


By default, the Error status relay is a break on event indicator. It stays closed until there is an error. Errors may be viewed on screen or via MODBUS.

### 8.9.1. Error Status Relay Setup Screen

```

→SR→Error      1/3 ↓
Mode: Break on Event
Trip Delay: 1s
Trip on Srvc EPB:OFF
  
```

Press the  button to enter edit mode. Use   Arrows to move between the editable fields. Use   Arrows to change each field's value.






Press  again to save settings.

- **Mode** - Set to either Make or Break on Event.
- **Trip Delay** - Range from 0 to 30 seconds.
- **Trip on Srvc EPBA/L** - On/Off to send fault if EPBA/L charge capacity has reached 50% of the original capacity.

### 8.9.2. Close Status Relay Setup Screen

```

→SR→Closed     2/3 ↑
Mode: Make on Event
Trip: 0% OPEN
Trip Delay: 0s
  
```

Press the  button to enter edit mode. Use   Arrows to move between the editable fields. Use   Arrows to change each field's value.






Press  again to save settings.


- **Mode** - Set to either Make or Break on Event.
- **Trip** - Percent open that causes relay to trip. Value ranges from 0 to 100%.
- **Trip Delay** - Range from 0 to 30 seconds.

### 8.9.3. Open Status Relay Setup Screen

```

→SR→Open       2/3 ↑↓
Mode: Make on Event
Trip: 100% OPEN
Trip Delay: 0s
  
```

Press the  button to enter edit mode. Use   Arrows to move between the editable fields. Use   Arrows to change each field's value.

Press  again to save settings.





- **Mode** - Set to either Make or Break on Event.
- **Trip** - Percent open that causes relay to trip. Value ranges from 0 to 100%.
- **Trip Delay** - Range from 0 to 30 seconds.


## 8.10. Misc Setup

Refer to [Section 8](#) on the steps needed to take to access this configuration tree.

### 8.10.1. EMI Noise Filters Screen

```
→MS→EMI Filter  1/3 ↓
DI Level:        MED
Keypad Level:    LOW
Keypad Lock:     ON
```





Press the  button to enter edit mode. Use   Arrows to change the field's value. Press  again to save settings.

- **DI Level** - Sets the level that the firmware will filter Digital Inputs. Low: 100mS, Med: 300mS, High: 500mS
- **Keypad Level** - Sets the level that the firmware will filter Keypad Presses. Low: 100mS, Med: 300mS, High: 500mS.
- **Keypad Lock** - If enabled, then when the actuator is idle and on the Main Screen for 5 minutes, the keypad will lock itself. This is to help prevent unwanted button presses in environments with high amounts of electrical noise. Keypad Lock can also be enabled by pressing the  button from the Main Screen. To access the unit once it's enabled, a button will need to be pressed for 3 seconds.

### 8.10.2. Security Screen

If enabled, once the menu has been exited, a password will have to be entered to access the menu.





```
→MS→Security  3/3 ↑
Menu Security: OFF
```

Press the  button to enter edit mode. Use   Arrowsto change the field's value. Press  again to save settings.

### 8.10.3. Units Screen

The units that the actuator will display temperature in. Options are Fahrenheit (°F) or Celsius (°C)

```
→MS→Units  2/3↑↓
Temperature: °F
```

Press the  button to enter edit mode. Use   Arrowsto change the field's value. Press  again to save settings.

Continued on next page...

## 8.11. Factory Setup

Refer to [Section 8](#) on the steps needed to take to access this configuration tree.

### 8.11.1. Restore Defaults Screen

This screen is used to either restore all settings to factory setup, or to clear the current calibration end points. Follow on screen prompt to perform desired operation.

```
→FS→Restore      1/4 ↓
Restore System    [ENT]
Clear Pos Cal     [CCW]
```

### 8.11.2. Keypad Test Screen

This screen is used to test all the keypad buttons. Follow onscreen prompts. Hold ESC button to exit test.

```
→FS→Key Test      2/4↑↓
Hold [ENT] to     BEGIN
Hold [ESC] to     EXIT
```

### 8.11.3. 4-20 Loopback Test Screen

This screen is used to test the 4-20mA(J2) Input and Output circuits. This can be helpful if there's a question as to whether or not the Signal Control circuit is operational.

Follow on screen prompts. Add a jumper wire between J2 IN+ and J2 OUT+. Press ESC button to exit test.

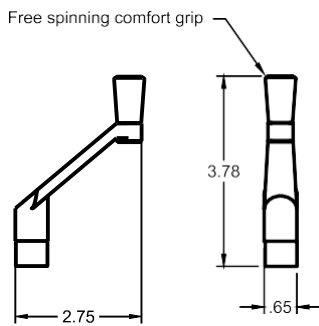
```
→FS→4-20 Test 3/4↑↓
Jumper wire from
J2 IN+ to J2 OUT+
Hit [ENT] to BEGIN.
```

### 8.11.4. Mac Address Screen

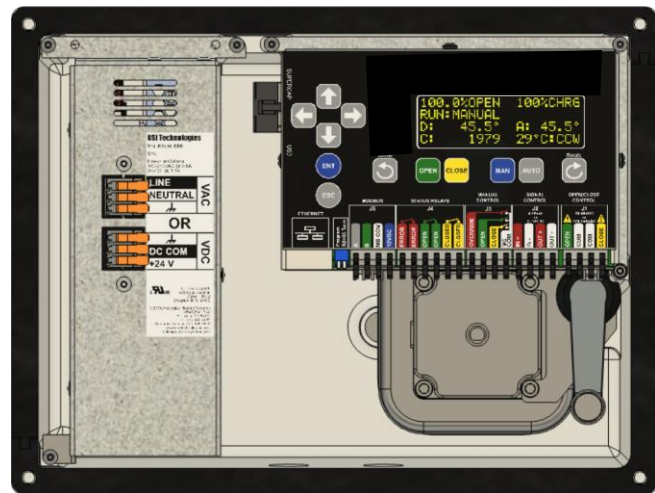
This screen is normally purely informational and displays the physical address of the ethernet on the Controller. It also shows the lot number which allows for traceability of when the controller was manufactured.

```
→FS→MAC Addr      4/4 ↑
US:00:00:00:00:00:00
LOT#: 37655
```

## 9. Manual Override Handle Option



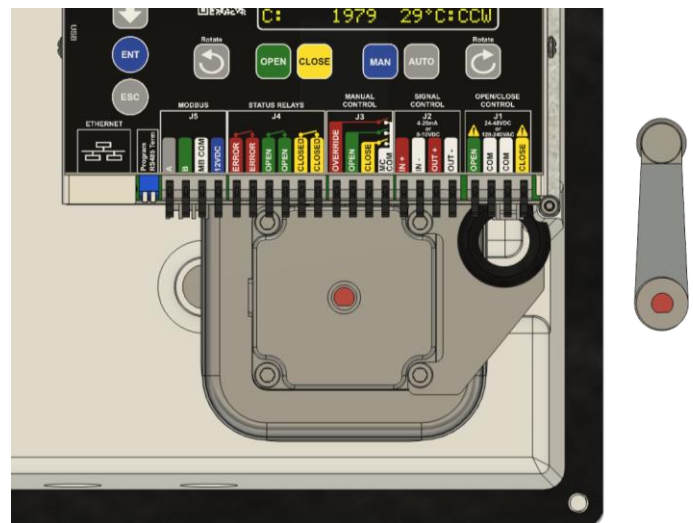
The manual override handle allows for the actuator to OPEN/CLOSE a valve during total power outage. The handle will be mounted on the right-hand side of the U Series gearbox motors as shown to the right.



Remove handle from the mount by pulling upwards. Push against the mount if necessary.

Once removed, align the bottom Female-D of the handle onto the shaft protruding from the motor.

Both have been colored red in the image for visibility.

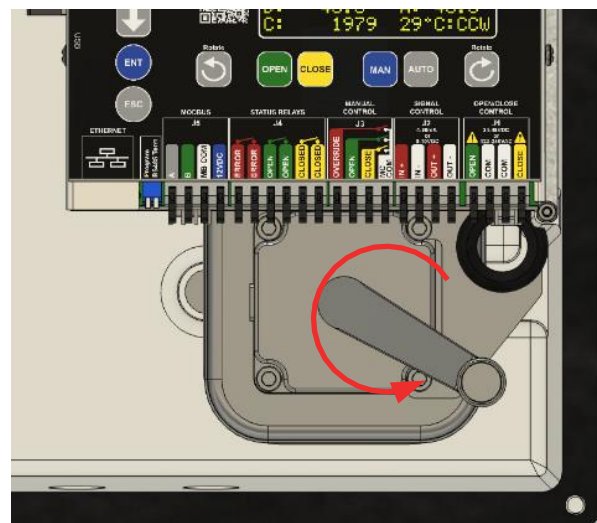


Spin the handle to move the actuator in the desired direction.

For ULD Models, the output shaft will move in the same direction as you spin the handle.

For all other models, the output shaft will move in the opposite direction as you spin the handle.

Example to the right: An ULB model needs to be CLOSED. To close the valve in the CLOCKWISE position, spin the handle in the COUNTER-CLOCKWISE direction.



## 10. Controller Fault Codes

### 10.1. Error fault codes

Fault Code	Cause	Options to Remedy
MAGNET-RANGE POS-SENSOR MOTOR-STALLED	All of these errors relate to the Controller being able to see movement on the shaft when sending an output to the motor to move. It means that either the shaft is not moving or is moving in a way not expected by the Controller.	<p>Verify valve/shaft movement. If there is no movement, ensure there is no blockage in the valve.</p> <p>Verify model on U-Series label matches model set in Controller by pressing the left arrow from the home screen.</p> <p>If the model matches, there's no movement in either direction, the first component to try to swap would be a new Controller. If a new Controller doesn't clear the problem, then the full actuator should be evaluated.</p>
*CALIBRATE POSITION*	Controller still has the factory default calibration numbers set.	Set the end points.
420-NOCONNECT	Controller is in 4-20 Auto mode but does not see a valid signal.	Use a multimeter or 4-20 loop calibrator to verify the signal being sent to the Controller. If a valid signal (within the 4-20mA range) is present, then a new further troubleshooting or a new Controller may be necessary.
OC-NOCONNECT	Controller is in 2-Wire Auto mode but does not see a valid signal	Ensure proper signal voltage is at the input. 24-48VDC or 120-240 VAC. If voltage is there, try to send the OPEN command and see if a + appears next OPN on the home screen. Do the same with the CLOSE command. If no + shows up next to either on the home screen, then likely there was damage done to the J1 port and a new Controller will be needed.
MBCOM-TIMEOUT	Controller is in MB-TCP Auto mode but does not see valid communication.	Verify all settings related to MODBUS-TCP. Test software/templates are available <a href="#">here</a> to verify communication between Controller and PC
SCAP-COM-LOST	Actuator is set up as a -EPBA/L model but does not see Super Cap communication	Verify that connector on left side of the Controller is plugged in with no damage to any of the wires. If all looks well then would need to try either new Controller, PSUNI or PS024 depending on model.
MAIN-POWER-LOST	Actuator has Super Cap back-up and Super Cap no longer sees input power >20VDC	Check voltage into PSUNI/PS024 power input terminal
*MODEL NOT SELECTED*	Actuator model has not been set up in the Controller.	Set up actuator model as shown in section 2.8 of this user manual.
*NO MAC ADDRESS SET*	Valid MAC address not set in unit.	Only an issue if using MODBUS TCP and should always be set by factory.



# 11. Troubleshooting

## 11.1. General Issues

Symptom	Possible Causes/Remedies
Actuator won't power on	<p>Ensure voltage is within range on label and present at terminal block on the PS024 or PSUNI.</p> <p>Unplug power connector from bottom right hand corner of CONTROLLER. With voltage applied to the PSUNI/PS024 the voltage on this plug should be 48VDC. If that voltage is not 48VDC but voltage has been verified on the terminal block, then it's likely the PSUNI/PS024 has been damaged and needs to be replaced.</p>
Actuator powers on but doesn't stay powered	<p>Ensure power supply has proper amperage rating for the actuator. The 24VDC input needs to be at least 3.3A. 120VAC input needs to be at least .67A</p> <p>Ensure that wires going into terminal block and PSUNI/PS024 and the connector on bottom right hand corner of the Controller are secured properly.</p>
Display Glitches or Random Button Presses	<p>So far almost every instance of a display or Controller having erratic functionality has been due to EMI conducted through the power input/control signal input wires. Adding ferrites to the input cables or isolating the high/low voltage lines should remedy this.</p>
Actuator turns valve in opposite direction of signal being supplied	<p>Check voltage to terminal block between COM and port that should be live to ensure proper wiring.</p> <p>Reference section 7.3 and ensure that OPEN direction is properly set</p>
Actuator seems to have less holding torque when not in motion	<p>Ensure that POWER SAVE MODE has not been enabled on the POWER MANAGEMENT settings screen. If it has, then switch setting to TEMP CONTROL or HOLDING TORQUE mode.</p>

## 11.2. J1 OPEN/CLOSE Issues

Symptom	Possible Causes/Remedies
Actuator won't turn when command signal is sent from panel	<p>Ensure proper command signal voltage across the COM and the OPEN or CLOSE port. If 24-48VDC or 100-240VAC is present, then on the screen a + should appear by whichever signal is currently being supplied. If a + is not being shown by the OPN or CLS on the main screen but proper voltage is being measured, it's possible the port was damaged. This has only been observed to happen during lightning storms. If this is the case, a new Controller module will be needed.</p> <p>U-Series not set in 1-Wire or 2Wire mode. Press the Auto button on the screen to cycle to proper mode. Press ENT to select.</p> <p>Check motor connection (connection near the bottom left hand corner of the Controller) and ensure that it is properly seated</p>



### 11.3. 4-20mA/0-10VDC Issues

Symptom	Possible Causes/Remedies
My panel is outputting 20mA/4mA but the U-Series is showing less than that	More likely than not this is just a long wire run issue. It can be solved by simply performing a 4-20mA calibration as shown in section 8.1. If the U-Series OPEN or CLOSE position is calibrated to what your panel is supplying, it will treat that signal as a full 4mA or 20mA so that the actuator fully opens and closes as expected.
Using 0-10VDC but when applying 0VDC the actuator shows a fault	Versions 4.0.0 of software and earlier don't have an actual 0-10VDC mode. That will be implemented in the future. If that is the mode that you need to use, try to use 2VDC as the CLOSE signal and the fault should go away as it is roughly 4mA when converted through our ADC.
Actuator 4-20mA feedback is not as expected when the signal is received at our panel	The 4-20mA feedback is able to be calibrated and output different values as needed. Refer to section 8.2 on performing a DAC calibration. When doing this calibration for this reason, instead of having an Ammeter at the unit, have the panel operator read the values as they're adjusted so that you know when they are within acceptable range of your panel.

### 11.4. MODBUS Issues

Symptom	Possible Causes/Remedies
It isn't working	With MODBUS requiring a higher attention to detail to properly function and having so many different variables, the best support that we can offer is found at this <a href="#">LINK</a> . Here you will find instructions, software, and workspaces for MODBUS Poll. It is how we test and verify MODBUS functionality on before shipping product. Follow the directions in ModbusPollingSetup.docx. Use this to test the U-Series actuator and from there backtrack through the other devices in your network to find the issue.