



PROMATION ENGINEERING

Precision Actuation for Industry

Data Sheet

UL(C-F) Series

On/Off/Jog/Proportional/Modbus
 Hazardous Location Class 1 Division II
 5211 F07/F10 8P27mm Drive

Multiple Field Selectable Control Configurations

- 2 wire On/Off/Jog
- Single wire On/Off
- Three Position
- Proportional
 - 4-20mA
 - 2-10VDC
 - 1-5VDC
- MODBUS RTU/TCP



Front Panel LED Status Display

Supercapacitor Option for Loss of Power Positioning

Torque Range from
 400 to 5000 in lbs
 68 to 565 Nm

Hazardous Location Certified
 Class 1 Division II
 Groups A, B, C, D



| Specifications | ULC | | ULD | | ULE | | ULF | |
|-------------------------------------|---|--------------|----------------|--------------|----------------|--------------|----------------|--------------|
| Torque "lb/Nm | 600"lbs/68Nm | | 1200"lbs/136Nm | | 2500"lbs/282Nm | | 5000"lbs/565Nm | |
| Supply Voltage | 24vac/vdc | 100 - 240vac | 24vac/vdc | 100 - 240vac | 24vac/vdc | 100 - 240vac | 24vac/vdc | 100 - 240vac |
| Max Run Current | 3.3A | 0.65A | 3.3A | 0.65A | 3.3A | 0.65A | 3.3A | 0.65A |
| Standby Current Draw | 0.47A | 0.14A | 0.47A | 0.14A | 0.47A | 0.14A | 0.47A | 0.14A |
| Motor | Fully Enclosed Stepper Motor | | | | | | | |
| Runtime (90°) | 3-10 sec | | 7-20 sec | | 12-36 sec | | 27-85 sec | |
| Duty Cycle | 100% | | | | | | | |
| Motor Starts | 6000 per hour | | | | | | | |
| Weight (lbs/kg) | 26 / 11.8 | | 26 / 11.8 | | 27 / 12.3 | | 28 / 12.7 | |
| Mechanical Connections | ISO5211 F07 F10 | | | | | | | |
| Electrical Entry | 1/2" NPT | | | | | | | |
| Line Terminations | 12-16ga | | | | | | | |
| Environmental Rating | Hazardous Location Class 1 Division II Groups A, B, C, D - NEMA 4 | | | | | | | |
| Control (Field Selectable) | 2 wire On/Off/Jog, Single wire On/Off, Three Position, Proportional, MODBUS RTU/TCP | | | | | | | |
| Loss of Power | Field Programmable Motor Drive to Safe Position | | | | | | | |
| Actuator Case Material | Aluminum Alloy, Powder coated | | | | | | | |
| Multiturn | Multiturn Capability | | | | | | | |
| Ambient Temperature Operating Range | -40°F to +140°F -40°C to +60°C | | | | | | | |

SD_UAF_HV VerC 051524

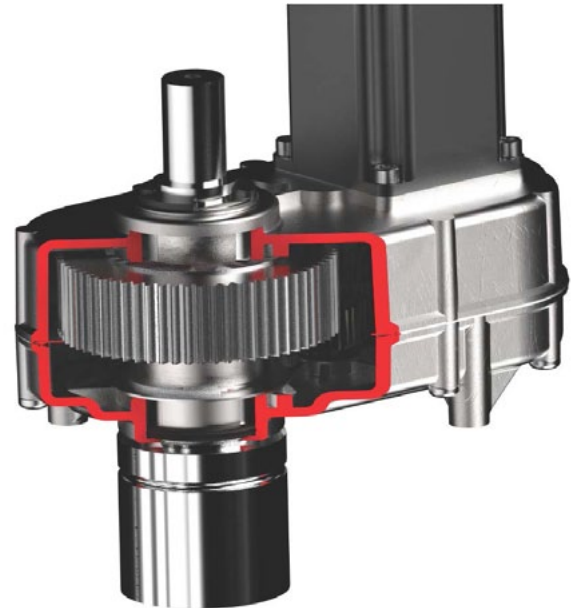


Advanced Electronic Design

- Easy end of travel set up for CW and CCW end points
- Set motor speed and cycle time
- Set loss of power and loss of signal position
- Dry Contacts for end of travel and error condition
- Valve status, power backup status, system faults, and service advisories available from main screen

Robust Mechanical Design

- Permanently lubricated sealed motor and gear assembly
- 100% Duty Cycle and 6000 starts per hour
- Multiturn or 0-270 rotation
- Non-contact position sensing
- No mechanical switches or contacts
- NEMA 4 enclosure
- 27mm double square drive with ISO5211 F07 / F10 mounting pattern



Product Identification

Product Family Voltage Options Environmental Power Backup Designations

ULE - AV

ULC 600"lbs/68Nm

ULD 1200"lbs/136Nm

ULE 2500"lbs/282Nm

ULF 5000"lbs/565Nm

LV 24VAC/DC

HV 100-240VAC

AV 24VDC; 100-240VAC

N 7

N Non-Spring Return

7 Hazardous Location

-EPBL

EPBA

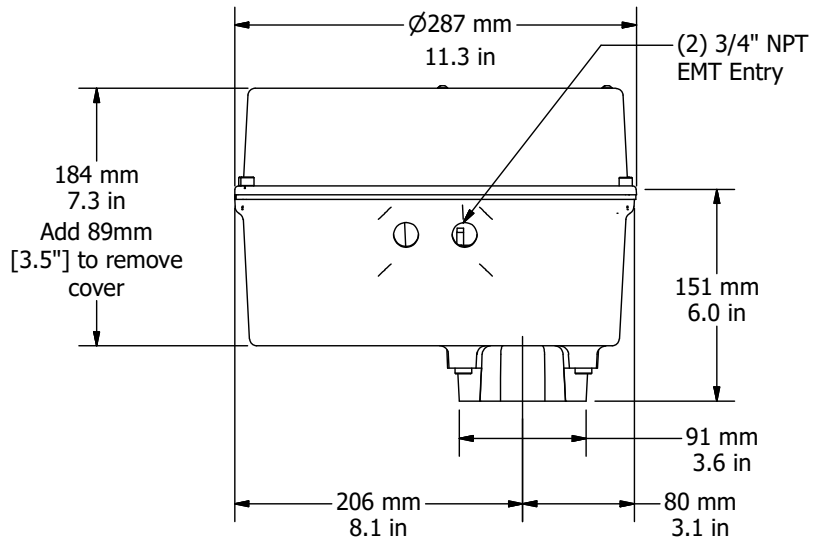
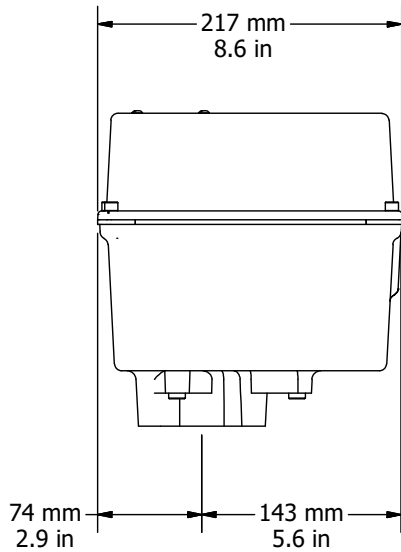
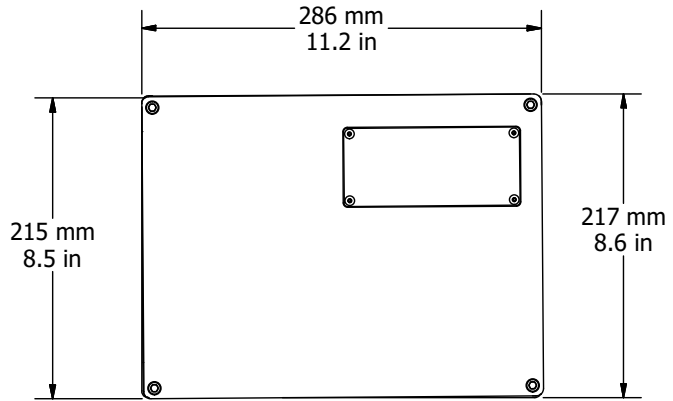
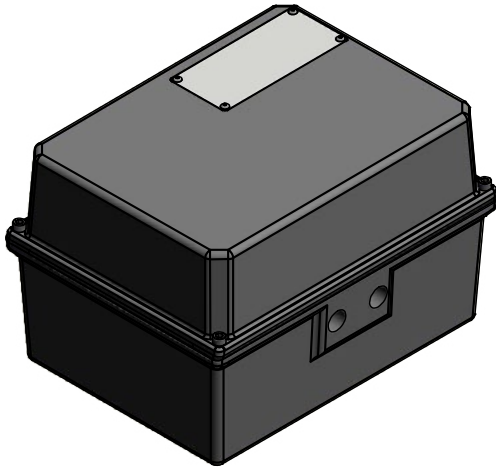
SuperCap Power Backup, 24VDC, 100-240VAC

EPBL

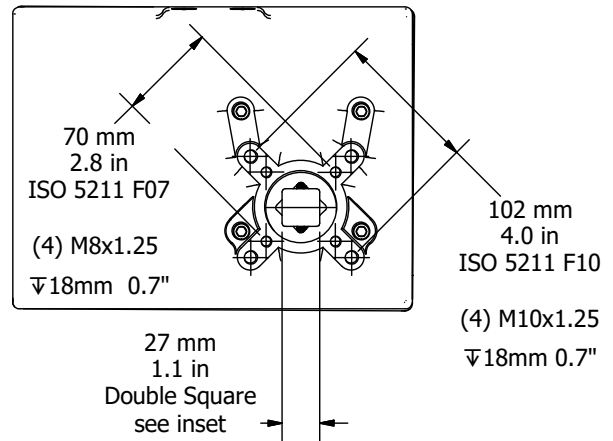
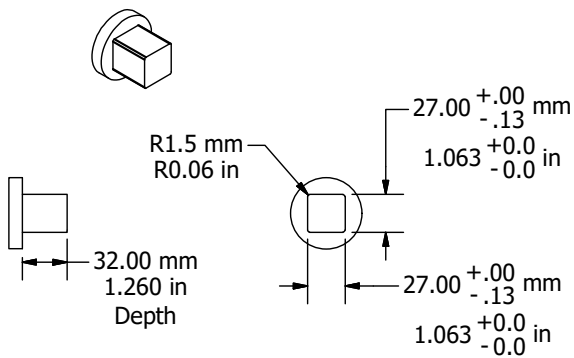
SuperCap Power Backup, 24 VAC/VDC

Note: Not all combinations are possible. Please consult factory.

Mechanical Drawings Dimensions



Drive Coupling Fabrication Data



| Item | Torque | Line Voltage | Power Backup | Description |
|---------------|---------------------|------------------------|--------------|--|
| ULC-LVN7 | 600 in lbs (68Nm) | 12VDC, 24VDC, 24VAC | | U Series Electric Actuator, 600 in lbs/ 68Nm Torque, 3-10 secs 90° rotation, F07/F10 ISO 5211 mount, 27mm double square drive, weight 26lbs/11.8kg, 24VDC or 24VAC line, 3.3A max, On/off or modulating, dry contact end of travel switches, Class I Div 2 Hazardous Location rated |
| ULC-HVN7 | 600 in lbs (68Nm) | 110-240 VAC | | U Series Electric Actuator, 600 in lbs/ 68Nm Torque, 3-10 secs 90° rotation, F07/F10 ISO 5211 mount, 27mm double square drive, weight 26lbs/11.8kg, 110 to 230VAC line, 0.65A Max, On/off or modulating, dry contact end of travel switches, Class I Div 2 Hazardous Location rated |
| ULC-LVN7-EPBL | 600 in lbs (68Nm) | 12VDC, 24VDC, 24VAC | Yes | U Series Electric Actuator, 600 in lbs/ 68Nm Torque, 3-10 secs 90° rotation, F07/F10 ISO 5211 mount, 27mm double square drive, weight 26lbs/11.8kg, Drive to safe position on power loss, 24VDC or 24VAC line, 3.3A max, On/off or modulating, dry contact end of travel switches, Class I Div 2 Hazardous Location rated |
| ULC-AVN7-EPBA | 600 in lbs (68Nm) | 24VDC/ AC , 110-240VAC | Yes | U Series Electric Actuator, 600 in lbs/ 68Nm Torque, 3-10 secs 90° rotation, F07/F10 ISO 5211 mount, 27mm double square drive, weight 26lbs/11.8kg, Drive to safe position on power loss, 24VDC or 24VAC line, 3.3A max, or 110 to 230VAC line, 0.65A Max, On/off or modulating, dry contact end of travel switches, Class I Div 2 Hazardous Location rated |
| ULD-LVN7 | 1200 in lbs (136Nm) | 12VDC, 24VDC, 24VAC | | U Series Electric Actuator, 1200 in lbs/ 136Nm Torque, 7-20 secs 90° rotation, F07/F10 ISO 5211 mount, 27mm double square drive, weight 26lbs/11.8kg, 24VDC or 24VAC line, 3.3A max, On/off or modulating, dry contact end of travel switches, Class I Div 2 Hazardous Location rated |
| ULD-HVN7 | 1200 in lbs (136Nm) | 110-240 VAC | | U Series Electric Actuator, 1200 in lbs/ 136Nm Torque, 7-20 secs 90° rotation, F07/F10 ISO 5211 mount, 27mm double square drive, weight 26lbs/11.8kg, 110 to 230VAC line, 0.65A Max, On/off or modulating, dry contact end of travel switches, Class I Div 2 Hazardous Location rated |
| ULD-LVN7-EPBL | 1200 in lbs (136Nm) | 12VDC, 24VDC, 24VAC | Yes | U Series Electric Actuator, 1200 in lbs/ 136Nm Torque, 7-20 secs 90° rotation, F07/F10 ISO 5211 mount, 27mm double square drive, weight 26lbs/11.8kg, Drive to safe position on power loss, 24VDC or 24VAC line, 3.3A max, On/off or modulating, dry contact end of travel switches, Class I Div 2 Hazardous Location rated |
| ULD-AVN7-EPBA | 1200 in lbs (136Nm) | 24VDC/ AC , 110-240VAC | Yes | U Series Electric Actuator, 1200 in lbs/ 136Nm Torque, 7-20 secs 90° rotation, F07/F10 ISO 5211 mount, 27mm double square drive, weight 26lbs/11.8kg, Drive to safe position on power loss, 24VDC or 24VAC line, 3.3A max, or 110 to 230VAC line, 0.65A Max, On/off or modulating, dry contact end of travel switches, Class I Div 2 Hazardous Location rated |
| ULE-LVN7 | 1200 in lbs | 12VDC, 24VDC, 24VAC | | U Series Electric Actuator, 2500 in lbs/ 282Nm Torque, 12-36 secs 90° rotation, F07/F10 ISO 5211 mount, 27mm double square drive, weight 27lbs/12.3kg, 24VDC or 24VAC line, 3.3A max, On/off or modulating, dry contact end of travel switches, Class I Div 2 Hazardous Location rated |
| ULE-HVN7 | 2500 in lbs (282Nm) | 110-240 VAC | | U Series Electric Actuator, 2500 in lbs/ 282Nm Torque, 12-36 secs 90° rotation, F07/F10 ISO 5211 mount, 27mm double square drive, weight 27lbs/12.3kg, 110 to 230VAC line, 0.65A Max, On/off or modulating, dry contact end of travel switches, Class I Div 2 Hazardous Location rated |
| ULE-LVN7-EPBL | 2500 in lbs (282Nm) | 12VDC, 24VDC, 24VAC | Yes | U Series Electric Actuator, 2500 in lbs/ 282Nm Torque, 12-36 secs 90° rotation, F07/F10 ISO 5211 mount, 27mm double square drive, weight 27lbs/12.3kg, Drive to safe position on power loss, 24VDC or 24VAC line, 3.3A max, On/off or modulating, dry contact end of travel switches, Class I Div 2 Hazardous Location rated |
| ULE-AVN7-EPBA | 2500 in lbs (282Nm) | 24VDC/ AC , 110-240VAC | Yes | U Series Electric Actuator, 2500 in lbs/ 282Nm Torque, 12-36 secs 90° rotation, F07/F10 ISO 5211 mount, 27mm double square drive, weight 27lbs/12.3kg, Drive to safe position on power loss, 24VDC or 24VAC line, 3.3A max, or 110 to 230VAC line, 0.65A Max, On/off or modulating, dry contact end of travel switches, Class I Div 2 Hazardous Location rated |
| ULF-LVN7 | 5000 in lbs (565Nm) | 12VDC, 24VDC, 24VAC | | U Series Electric Actuator, 5000 in lbs/ 565Nm Torque, 27-85 secs 90° rotation, F07/F10 ISO 5211 mount, 27mm double square drive, weight 28lbs/12.7kg, 24VDC or 24VAC line, 3.3A max, On/off or modulating, dry contact end of travel switches, Class I Div 2 Hazardous Location rated |
| ULF-HVN7 | 5000 in lbs (565Nm) | 110-240 VAC | | U Series Electric Actuator, 5000 in lbs/ 565Nm Torque, 27-85 secs 90° rotation, F07/F10 ISO 5211 mount, 27mm double square drive, weight 28lbs/12.7kg, 110 to 230VAC line, 0.65A Max, On/off or modulating, dry contact end of travel switches, Class I Div 2 Hazardous Location rated |
| ULF-LVN7-EPBL | 5000 in lbs (565Nm) | 12VDC, 24VDC, 24VAC | Yes | U Series Electric Actuator, 5000 in lbs/ 565Nm Torque, 27-85 secs 90° rotation, F07/F10 ISO 5211 mount, 27mm double square drive, weight 28lbs/12.7kg, Drive to safe position on power loss, 24VDC or 24VAC line, 3.3A max, On/off or modulating, dry contact end of travel switches, Class I Div 2 Hazardous Location rated |