



PROMATION ENGINEERING

Precision Actuation for Industry

U Series

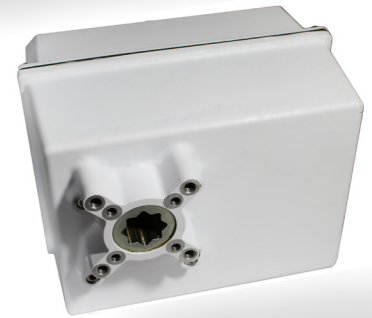
On/Off/Jog/Proportional/Modbus
5211 F07/F10 8P27mm Driv

Hydrogen Service Certified

Class 1 Division II, Groups A, B, C, D

Multiple Field Selectable Control Settings

- 2 wire On/Off/Jog
- Single wire On/Off
- Three Position
- Proportional
 - 4-20mA
 - 2-10VDC
 - 1-5VDC
- MODBUS RTU/TCP



Front Panel LED Status Display

Universal Line Power Input

Supercapacitor for Loss of Power Failsafe Positioning

Torque Range from 400 to 5000 in lbs (68 to 565 Nm)

Specifications	UMB		U M/L C		U M/L D		ULE		ULF	
Torque "lb/Nm	400"lbs/45Nm		600"lbs/68Nm		1200"lbs/136Nm		2500"lbs/282Nm		5000"lbs/565Nm	
Supply Voltage	24vac/ vdc	100 - 240vac	24vac/ vdc	100 - 240vac	24vac/ vdc	100 - 240vac	24vac/ vdc	100 - 240vac	24vac/ vdc	100 - 240vac
Max Run Current (A)	3.3	0.65	3.3	0.65	3.3	0.65	3.3	0.65	3.3	0.65
Standby Current Draw (A)	0.36	0.11	(M) 0.36 (L) 0.47	(M) 0.11 (L) 0.14	(M) 0.36 (L) 0.47	(M) 0.11 (L) 0.14	0.47	0.14	0.47	0.14
Motor	Fully Enclosed Stepper Motor									
Runtime (90°)	1.8-6 sec		3-10 sec		7-20 sec		12-36 sec		27-85 sec	
Duty Cycle	100%									
Motor Starts	6000 per hour with +/- 0.5 deg in 360 deg (0.14% Resolution)									
Weight (lbs/kg)	19/8.6		(M) 19/8.6 (L) 26 / 11.8		(M) 19/8.6 (L) 26 / 11.8		27 / 12.3		28 /12.7	
Mechanical Connections ISO5211	(M) F05 F07, 17 double square female drive		(L) F07 F10, 27 double square female drive							
Electrical Entry	1/2" NPT									
Line Terminations	12-16 AWG									
Environmental Rating	Hazardous Location Class 1 Division II Groups A, B, C, D - NEMA 4									
Control (Field Selectable)	2 wire On/Off/Jog, Single wire On/Off, Three Position, Proportional, MODBUS RTU/TCP									
Loss of Power	Field Programmable to Drive Motor Drive to Failsafe Position									
Actuator Case Material	Aluminum Alloy, Powder coated									
Multiturn	Multiturn Capability									
Ambient Temperature Operating Range	-40°F to +140°F -40°C to +60°C									

SD_UAF_HV VerF 012125

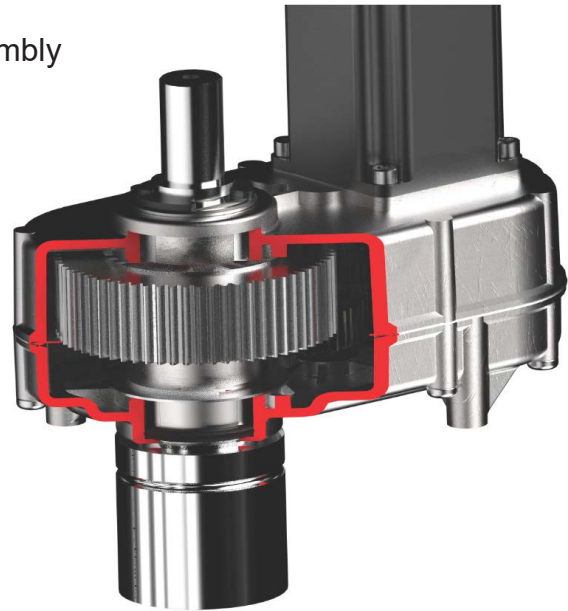


Advanced Electronic Design

- Easy digital end of travel set up for CW and CCW end points
- Set motor speed and cycle time
- Set loss of power and loss of signal position
- Dry Contacts for end of travel and error condition
- Valve status, power backup status, system faults, and service advisories available from main screen

Robust Mechanical Design

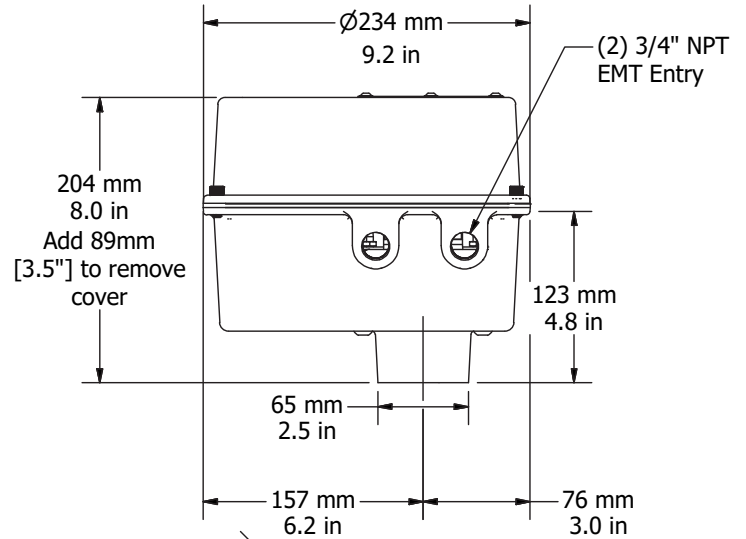
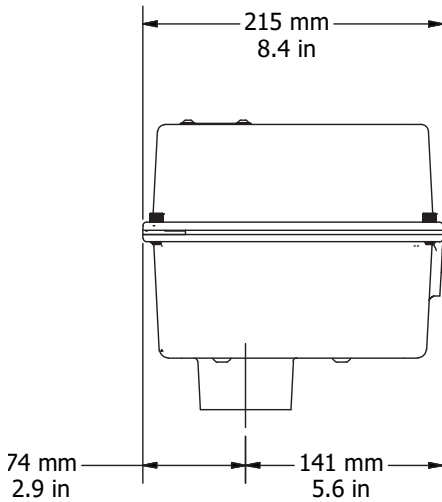
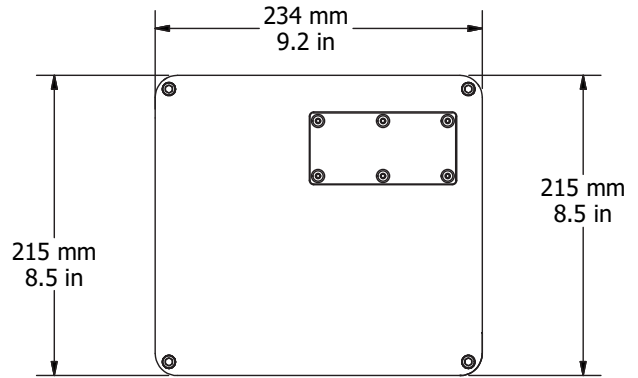
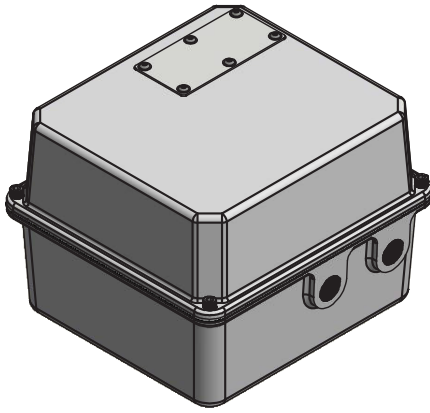
- Permanently lubricated sealed motor and gear assembly
- ± 0.5 Degree Accuracy in 360 degrees rotation (0.14% resolution)
- 100% Duty Cycle and 6000 starts per hour
- Multiturn or 0-270 rotation
- Non-contact position sensing - No mechanical switches or contacts
- NEMA 4 enclosure
- 27mm double square drive with ISO5211 F07 / F10 mounting pattern



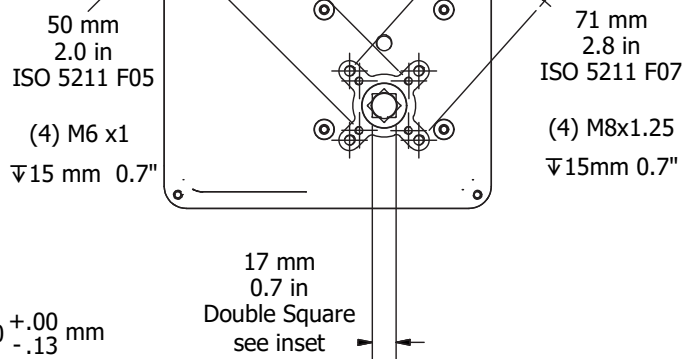
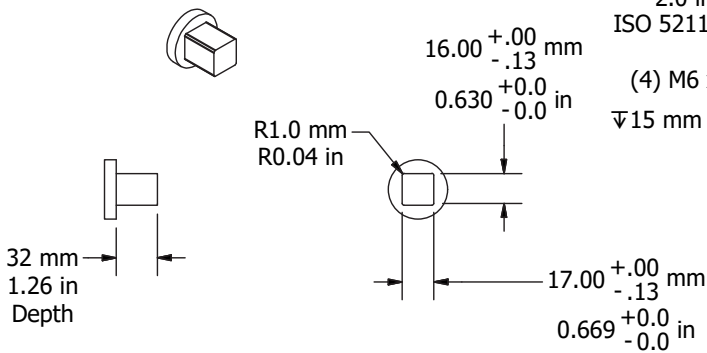
Applications

- Hydrogen / LNG Service
- Heat Exchanger Control and Isolation
- Holding Tank Level Control and Isolation
- LACT Skids
- Oil/Gas Burner Control
- Compressor Intake Control
- Three Phase Separators - Oil, Gas and Water level control valves.
- MultiTurn Valves
- Flare Line Control and Isolation
- High Accuracy Chemical Injection
- Emergency Tunnel Ventilation
- Clean Room HVAC Control and Isolation
- Data Center Backup Fuel Control

Mechanical Drawings - UM Series

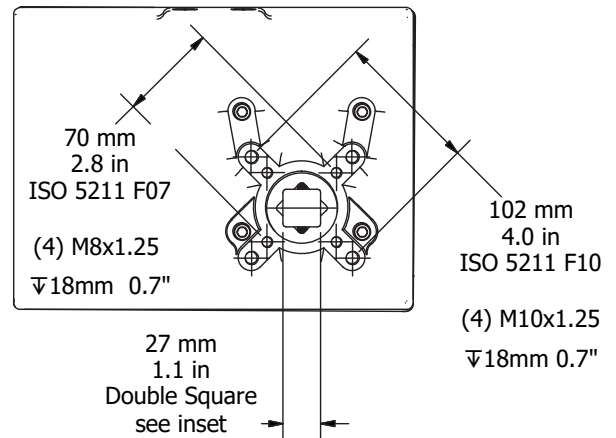
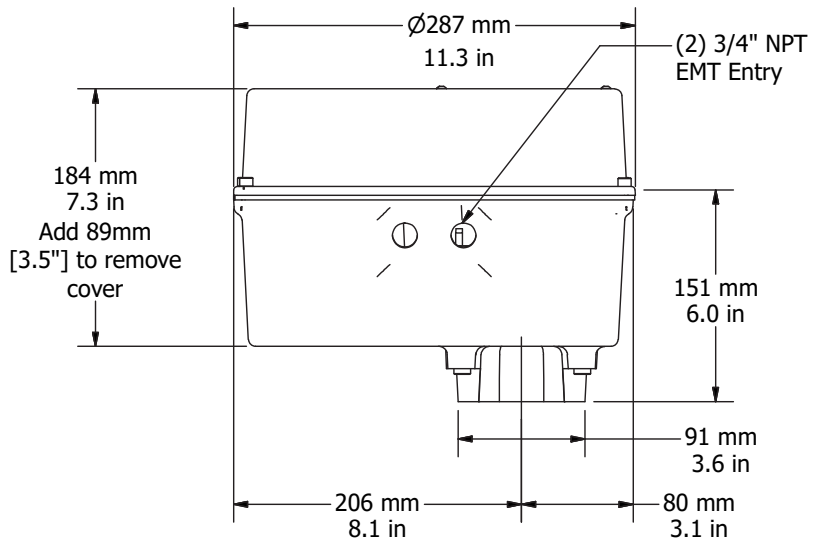
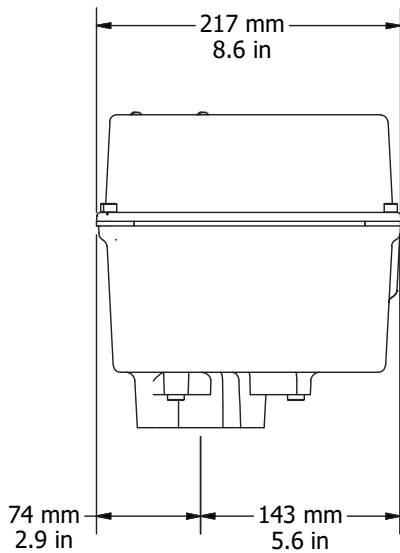
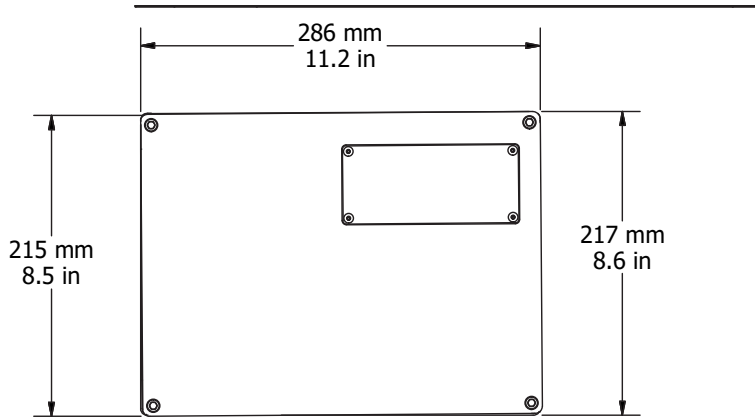
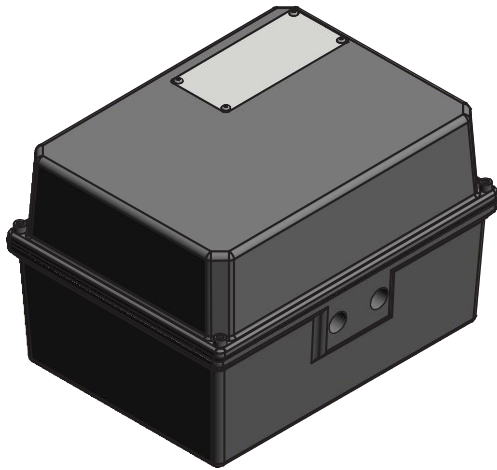


Drive Coupling Fabrication Data

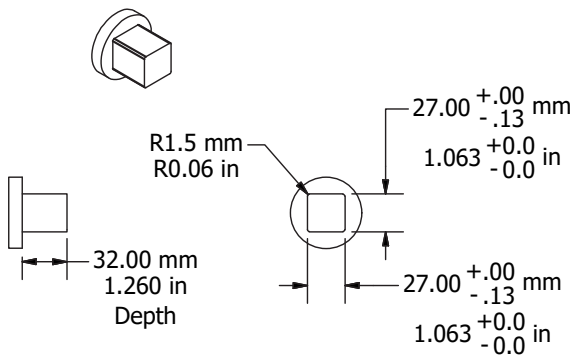


SD_UAF_HV VerF 012125

Mechanical Drawings - UL Series

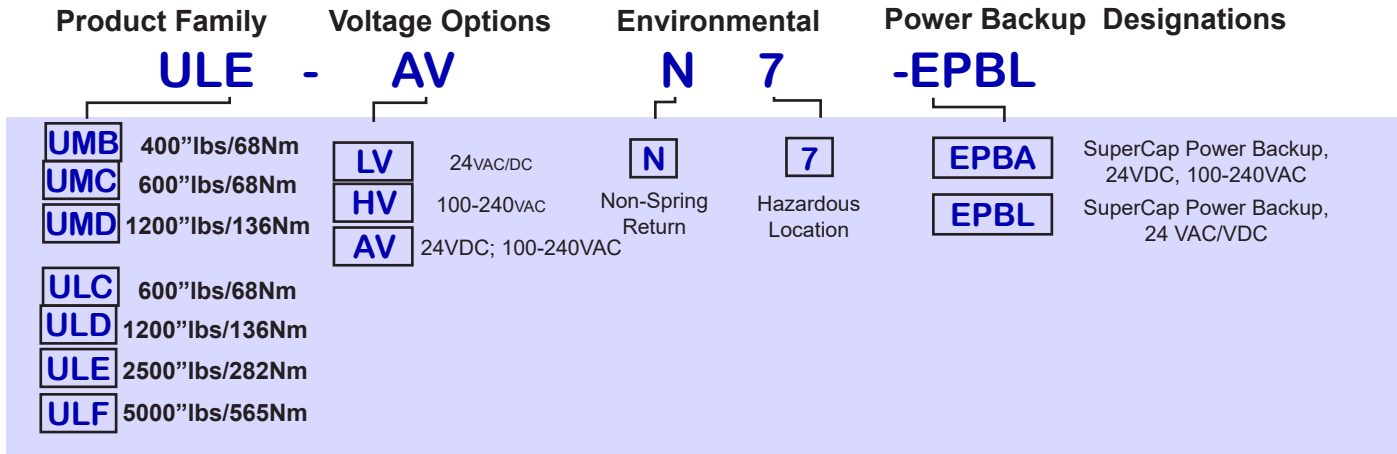


Drive Coupling Fabrication Data



SD_UAF_HV_VerF 012125

Product Nomenclature



Product Information - UM Series

Item (From matrix)	Torque (in lbs / Nm)	Mount	Power	Cycle Time	Weight	Power Backup
UMB-LVN7	400 / 45	F05/F07 ISO 5211 mount, 17mm double square drive	24VDC or 24VAC	1.6 to 6	19lbs/8.6kg,	
UMB-HVN7	400 / 45	F05/F07 ISO 5211 mount, 17mm double square drive	100 to 240VAC	1.6 to 6	19lbs/8.6kg,	
UMB-LVN7-EPBL	400 / 45	F05/F07 ISO 5211 mount, 17mm double square drive	24VDC or 24VAC	1.6 to 6	19lbs/8.6kg,	Yes
UMB-AVN7-EPBA	400 / 45	F05/F07 ISO 5211 mount, 17mm double square drive	24VDC / 100 to 240VAC	1.6 to 6	19lbs/8.6kg,	Yes
UMC-LVN7	600 / 68	F05/F07 ISO 5211 mount, 17mm double square drive	24VDC or 24VAC	3 to 10	19lbs/8.6kg,	
UMC-HVN7	600 / 68	F05/F07 ISO 5211 mount, 17mm double square drive	100 to 240VAC	3 to 10	19lbs/8.6kg,	
UMC-LVN7-EPBL	600 / 68	F05/F07 ISO 5211 mount, 17mm double square drive	24VDC or 24VAC	3 to 10	19lbs/8.6kg,	Yes
UMC-AVN7-EPBA	600 / 68	F05/F07 ISO 5211 mount, 17mm double square drive	24VDC / 100 to 240VAC	3 to 10	19lbs/8.6kg,	Yes
UMD-LVN7	1200 / 136	F05/F07 ISO 5211 mount, 17mm double square drive	24VDC or 24VAC	7 to 20	19lbs/8.6kg,	
UMD-HVN7	1200 / 136	F05/F07 ISO 5211 mount, 17mm double square drive	100 to 240VAC	7 to 20	19lbs/8.6kg,	
UMD-LVN7-EPBL	1200 / 136	F05/F07 ISO 5211 mount, 17mm double square drive	24VDC or 24VAC	7 to 20	19lbs/8.6kg,	Yes
UMD-AVN7-EPBA	1200 / 136	F05/F07 ISO 5211 mount, 17mm double square drive	24VDC / 100 to 240VAC	7 to 20	19lbs/8.6kg,	Yes

SD_UAF_HV VerF 012125

Product Information - UL Series

Item (From matrix)	Torque (in lbs / Nm)	Mount	Power	Cycle Time	Weight	Power Backup
ULC-LVN7	600 / 68	F07/F10 ISO 5211 mount, 27mm double square drive	24VDC or 24VAC	3 to 10	26lbs/11.8kg,	
ULC-HVN7	600 / 68	F07/F10 ISO 5211 mount, 27mm double square drive	100 to 240VAC	3 to 10	26lbs/11.8kg,	
ULC-LVN7-EPBL	600 / 68	F07/F10 ISO 5211 mount, 27mm double square drive	24VDC or 24VAC	3 to 10	26lbs/11.8kg,	Yes
ULC-AVN7-EPBA	600 / 68	F07/F10 ISO 5211 mount, 27mm double square drive 24VDC / 100 to 240VAC	24VDC / 100 to 240VAC	3 to 10	26lbs/11.8kg,	Yes
ULD-LVN7	1200 / 136	F07/F10 ISO 5211 mount, 27mm double square drive	24VDC or 24VAC	7 to 20	26lbs/11.8kg,	
ULD-HVN7	1200 / 136	F07/F10 ISO 5211 mount, 27mm double square drive	100 to 240VAC	7 to 20	26lbs/11.8kg,	
ULD-LVN7-EPBL	1200 / 136	F07/F10 ISO 5211 mount, 27mm double square drive	24VDC or 24VAC	7 to 20	26lbs/11.8kg,	Yes
ULD-AVN7-EPBA	1200 / 136	24VDC / 100 to 240VAC F07/F10 ISO 5211 mount, 27mm double square drive	24VDC / 100 to 240VAC	7 to 20	26lbs/11.8kg,	Yes
ULE-LVN7	2500 / 282	F07/F10 ISO 5211 mount, 27mm double square drive	24VDC or 24VAC	12 to 36	27lbs/12.3kg,	
ULE-HVN7	2500 / 282	F07/F10 ISO 5211 mount, 27mm double square drive	100 to 240VAC	12 to 36	27lbs/12.3kg,	
ULE-LVN7-EPBL	2500 / 282	F07/F10 ISO 5211 mount, 27mm double square drive	24VDC or 24VAC	12 to 36	27lbs/12.3kg,	Yes
ULE-AVN7-EPBA	2500 / 282	24VDC / 100 to 240VAC F07/F10 ISO 5211 mount, 27mm double square drive	24VDC / 100 to 240VAC	12 to 36	27lbs/12.3kg,	Yes
ULF-LVN7	5000 / 565	F07/F10 ISO 5211 mount, 27mm double square drive	24VDC or 24VAC	27 to 85	28lbs/12.7kg,	
ULF-HVN7	5000 / 565	F07/F10 ISO 5211 mount, 27mm double square drive	100 to 240VAC	27 to 85	28lbs/12.7kg,	
ULF-LVN7-EPBL	5000 / 565	F07/F10 ISO 5211 mount, 27mm double square drive	24VDC or 24VAC	27 to 85	28lbs/12.7kg,	Yes
ULF-AVN7-EPBA	5000 / 565	24VDC / 100 to 240VAC F07/F10 ISO 5211 mount, 27mm double square drive	24VDC / 100 to 240VAC	27 to 85	28lbs/12.7kg,	Yes

SD_UAF_HV VerF 012125